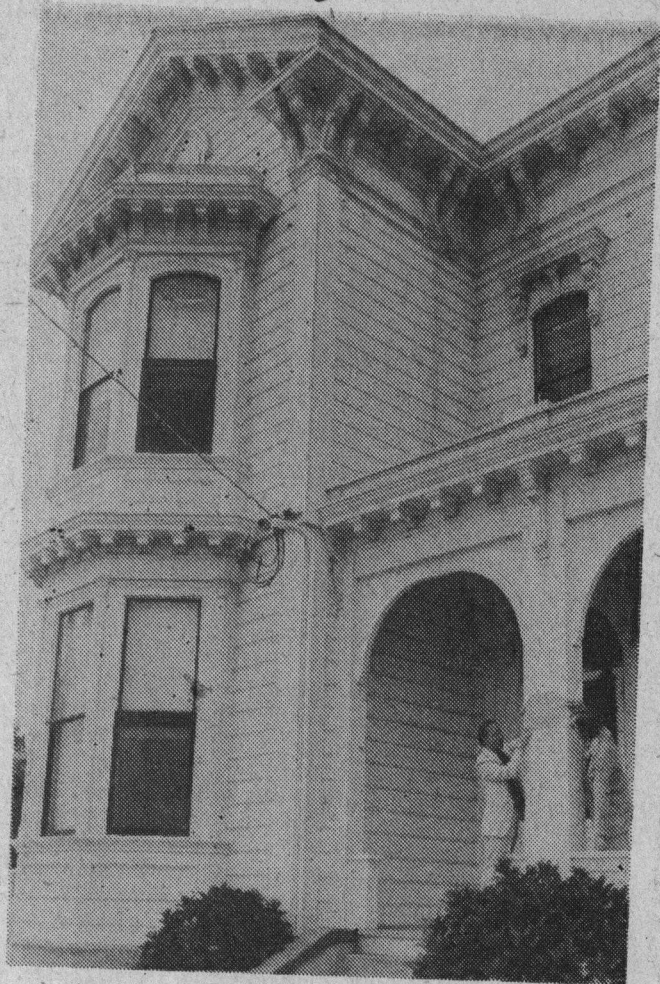


8 - 18 - 76



Historical Landmark

The "Sedgewick Lynch House" at 170 West Cliff Drive was given a Santa Cruz Historical Society landmark plaque Tuesday by Bruce Meacham, left, society president. The building is an example of the Italianate style of Victorian architecture and features an arcaded porch and lavish interiors. The house was built for Lynch in 1877 to a design by architect John Morrow. Lynch was a 49er who worked a profitable claim near Downville and later became a general contractor who built wharfs, railroads and bridges statewide. The plaque was accepted by Larry Hill of Advanced Properties, representing Mortgage Diversified Investors of Coral Gables, Fla., property owner.