



# Proceeding Under Full Sail

As inappropriate as it may sound for the future home of sailboats and power cruisers, it's full steam ahead these days at Woods Lagoon.

And with two kinds of steam.

One comes in billowy huffs and puffs from the old rig feeding the pile-driver.

The other, also plainly visible, is the energy being supplied by the men and equipment toward getting the yacht harbor completed by its September 1 deadline.

Despite the 57-day shut-down last year, the harbor's progressing right on schedule, Port Director Ralph Ring reported yesterday. And he sounded just like a yachtsman, praising the good weather and excellent crews.

For further confirmation, just ask any of the "regulars" among the sidewalk superintendents. They'll tell you, too, how amazingly fast the Bunyan-size equipment gets things done.

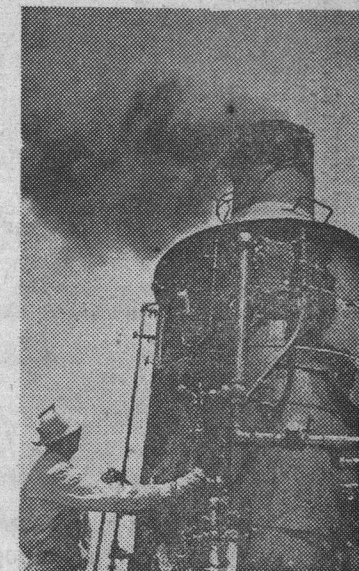
This past week their attention has been divided between the work of "The Monster," also known as the largest crawling crane in California; its slightly smaller counterpart, "The Little Monster," and the steam-powered pile-driver.

The larger crane (so huge it came in five box-cars) has been making light work of unloading some 400 pilings, picking them off the trucks and plunking them into the water like so many tooth-picks.

Over on the Atlantic avenue side the smaller crane, after three weeks' patient probing around a buried concrete slab, finally succeeded in bringing it up—in bucketfuls after it was blasted. The crane now has been moved over to the middle of the channel where by drag-line action it is doing the dredging between jetties.

First of the pilings for the docks and piers also went in this past week, an operation which especially fascinated onlookers.

—Betty Bushman



## Blast-Off

It's full steam ahead for pile-driver, Fireman Floyd Packer getting the pressure up to maximum 140 pounds for top operation.

## Just Looking

A catamaran, taking advantage of high tide, risks the still-shallow waters to venture into the new yacht harbor, now in its final phase of construction.

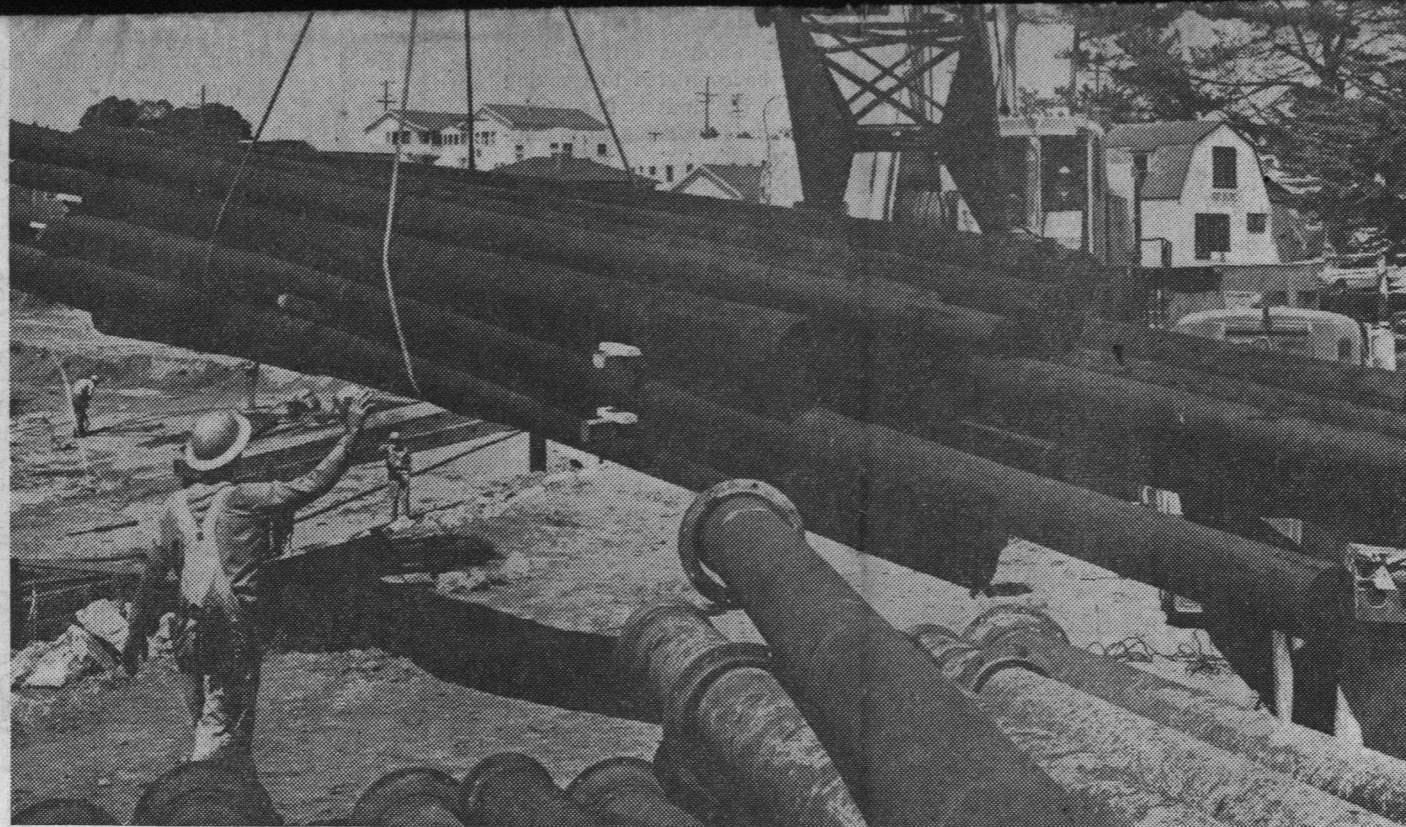


Santa Cruz Sentinel

Family Interest

## Sea-Diver

Plunging up and down at the west side entrance to the harbor for the past three weeks has been "The Little Monster" crane, below, endeavoring to dislodge a concrete slab which stood in the way of dredging to the required channel depth. The slab, part of the foundation of an old sewer plant, finally was blasted out, crane removing it in bucketfuls of debris.



## Spectator Sport

From the safe vantage point of East Cliff drive, and with a pile of pipes for bleachers, townspeople enjoy watching progress on the new yacht harbor. "In the stands" at left are Mr. and Mrs. Fred Meinheit with Mrs. A. E. Gregson (with binoculars) and behind them is A. M. Bartell, a visitor from Casa Grande, Arizona.



## Final Stage

Last big project toward the completion of the new yacht harbor got under way this part week with the beginning of the actual wharf construction. Creosote-covered Douglas fir pilings, above, are plucked off the semi by "The Monster," the largest crawling crane in California. Carefully selected according to size, individual piling, below right, then is placed at exactly the right angle before engineer gives the signal for the steam-powered pile-driver to start its work. Before being inserted into pile-driver leads (shaft), piling must be trimmed and metal-capped by workmen to prevent mushrooming under the tremendous pressure exerted.



Photos by  
Vester Dick

