

*Express Highway*



# Mid-County Freeway Aflyin'

Construction work is proceeding rapidly on extension of Santa Cruz-Watsonville freeway to Aptos.

In the photo at left, the northerly bridge across Park avenue is almost ready to be opened. About two weeks remain before traffic is divided on the two bridges.

The "off" and "on" ramps and the Park avenue section beneath the bridges will be finished in mid-November, according to Jim Johnson, assistant project engineer for Granite Construction company.

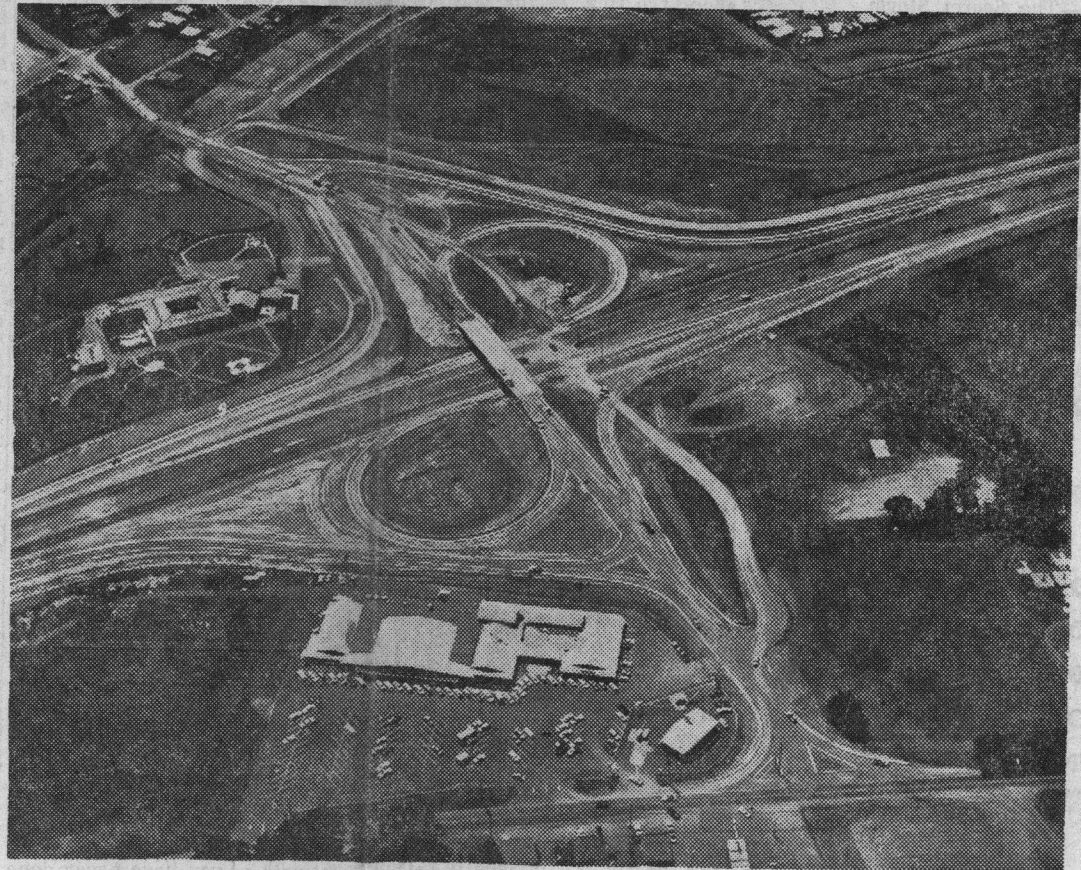
Cabrillo college athletic fields are in the upper left corner of the photo and Seacliff is in the distance.

The State Park drive (Seacliff) interchange is shown in the aerial photo below. It is expected to be open at the end of October.

Johnson said base rock and asphalt surfacing are all that is needed to make the "off" and "on" ramps usable by vehicles. The job is 90 per cent complete.

Landmarks include Rancho del Mar shopping center at bottom of the photo; Poor Clares convent at left, across the freeway; and cleared area for the soon-to-be-developed Sea Ridge subdivision, at top of the photo.

Granite began work on the freeway extension project in late October 1962. It bid \$1,255,000 for the contract.



## Zone Board Agenda

# Seacliff Commercial Permit Sought

A use permit for R. D. Baker Jr. is requesting a use permit to establish a commercial-apartment building in Seacliff will be used for a rental business to build a 22-unit multiple-family dwelling complex on the west side of 38th avenue about 400 feet

Realtors Honor Past Presidents | Congressmen May