

# Davenport's Ocean View

## ★ Know Your County ★

### Hotel Is Famed Landmark

Just 40 years ago this year—in 1907—the Coast Dairies and Land company, large property owners in the coast road section, erected a 28-room hotel at Davenport.

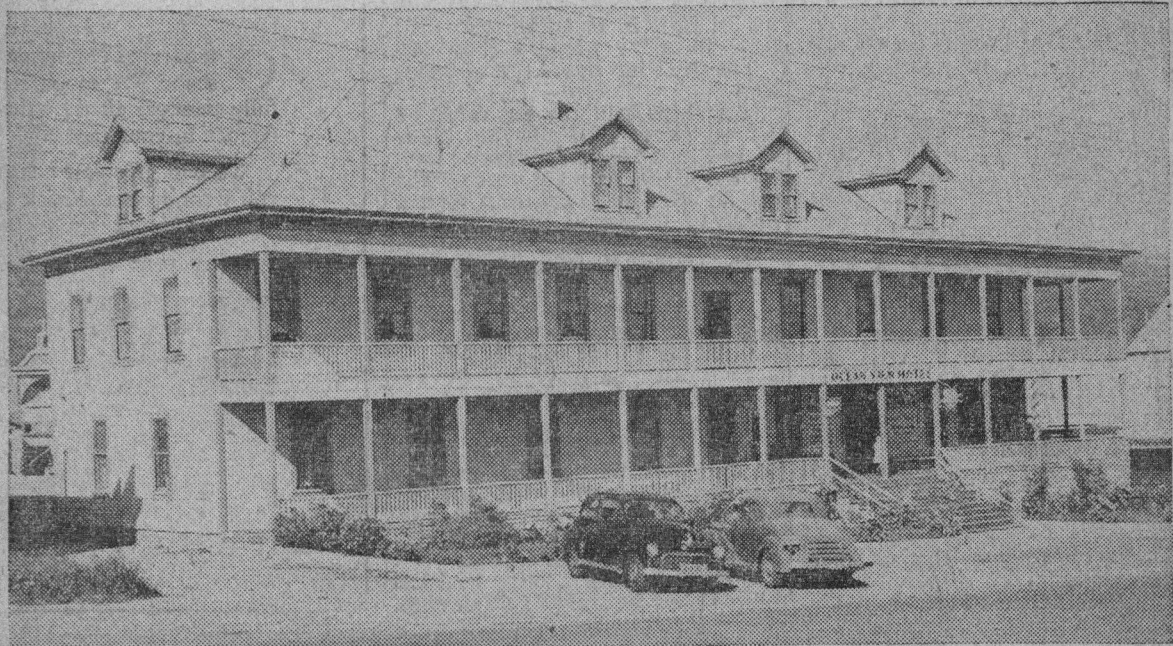
The structure was built to accommodate workers at the nearby Santa Cruz Portland Cement company plant and many of them lived there until the automobile got out of the horseless carriage era.

After the last war the cement plant employees found that their Chalmers, Briscoe, Cleveland or Mitchell would easily make the run to Santa Cruz so many of them became commuters.

When many of the workers had fled the "violent breezes" of Davenport there were vacant rooms in the hotel. About this time an ambitious young man, Charles J. Bella by name, unbuttoned the

choker collar and unwrapped the puttees of his doughboy uniform and decided there was a future in the hotel and restaurant business.

In 1919 Charlie and his brother, the late John Bella, purchased the Ocean View hotel. It has long been a landmark and is associated with the finest of Italian-style foods, cooked the way Swiss-Italians like it. Mrs. Bella supervises such dishes as chopped artichoke hearts fried in oil. Before the last war the hostelry was a pre-deer hunting season center and for many years hunters gathered there for a banquet to get the season off to a good start. The tap room is decorated with more than two dozen



## Ocean View Hotel County Landmark

For 40 years the 28-room Ocean View hotel with its peculiar style of architecture at windy Davenport 11, miles up the Ocean Shore highway, has been a Santa Cruz county landmark. It is a

popular spot for hunters, and due to genial Charlie Bella, the proprietor, it is a "clearing house" for Coast road news. It was originally built for cement plant workers, but now most of them commute to Santa Cruz.

prize heads. Bella says this custom may again be revived.

The hotel has become a stopping-off place for Santa Cruzans on their way back from San Francisco via the scenic coast route. They stop in and pick up the latest data on Davenport happenings from genial Charlie. There is one problem bothering him now which he has never been able to find the answer to in more than twenty years.

What type of architecture is the Ocean View hostelry? He says it might be Norwegian with all the jutting windows along the roof, but then again it might be Swiss chalet type without the steep roof, originally designed to keep Alpine snows from piling up. Anyone with an idea on the subject is urged to get in touch with the Davenport innkeeper. Only similar building he knows of is at McCloud, Shasta county.

During the years many a famous guest has dropped in, but most famous of all, especially to Italian-Americans, was a gent by the name of Amadeo Peter Giannini. This was in 1938. Some years before, Charlie was one of a number of local people who asked that a branch of the Bank of Italy, now America, be established in Santa Cruz. It seems the great banker remembered a letter Bella had written and resolved to see him the first time he came this way.

This is the sixth of the "Know Your County" stories. Davenport, with its pier and cement plant, is 11 miles north of Santa Cruz on the coast highway. Mission street runs into the highway. The entire trip affords a fine view of the Pacific ocean. (F.N.J.)