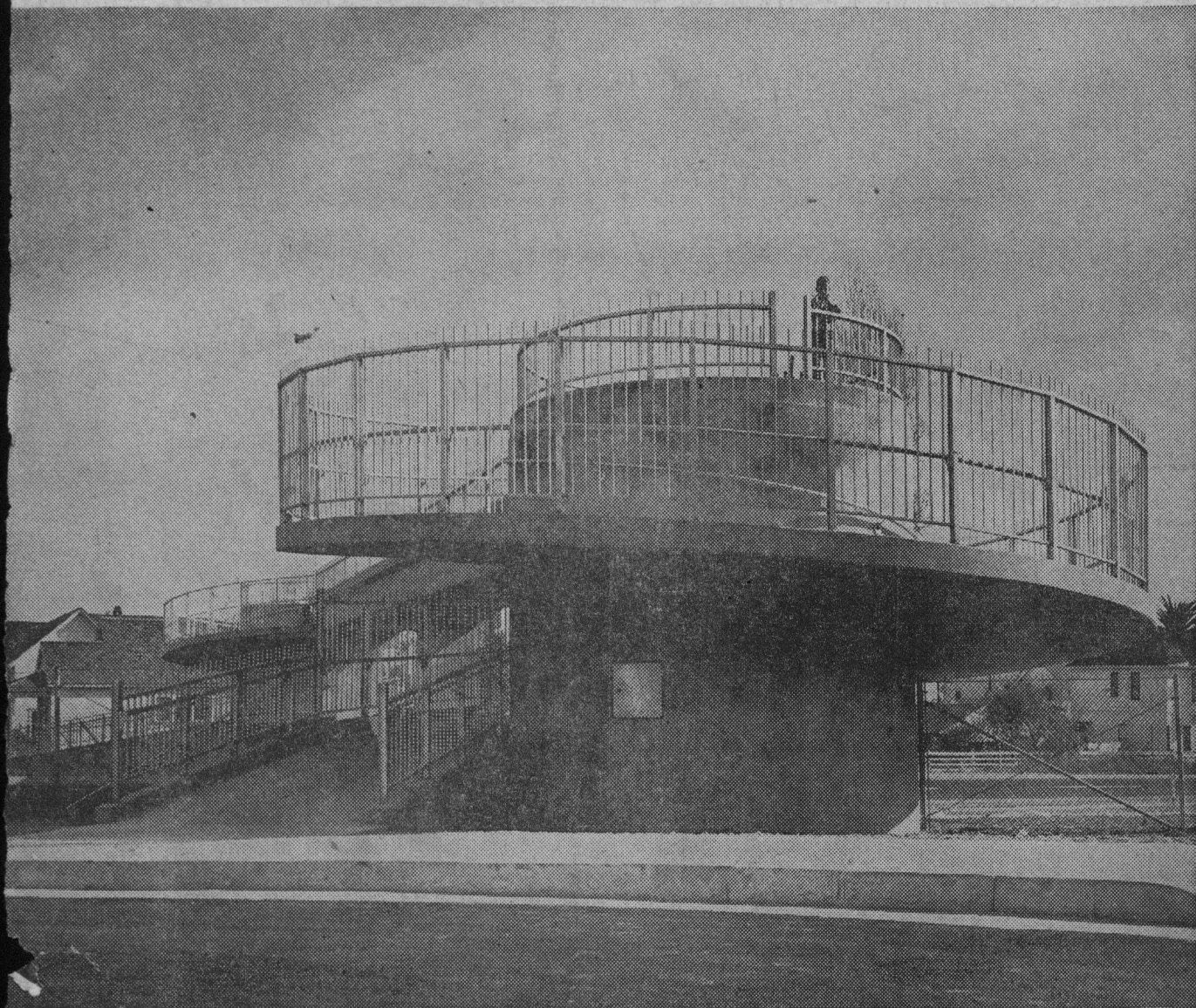


Pedestrian Overpass Adds Beauty To Freeway



Striking in appearance, the pedestrian overpass on Highway 101 adds structural beauty to the highway project. Design-

ed as a safety measure for school children at Holy Cross schools, the overpass includes a funicular ramp, which spirals upward to the overpass at both

sides of the highway. The metal fencing also adds to the appearance. For an unusual aerial photograph, showing the entire

◆ ◆ ◆

length of the by-pass, turn to Page 10. Other pictures of the by-pass, which opened to traffic yesterday afternoon, appear on Page 11.