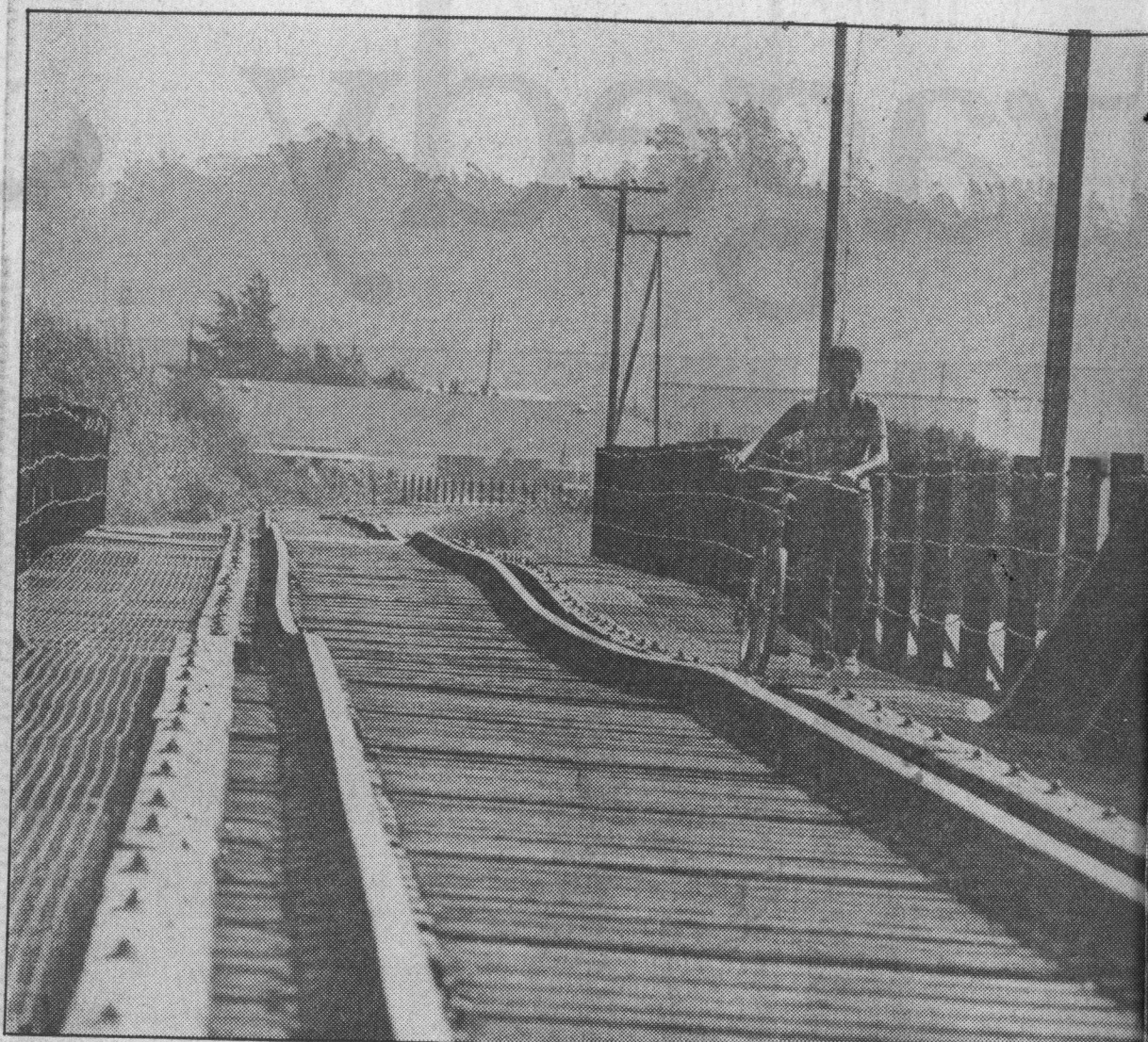
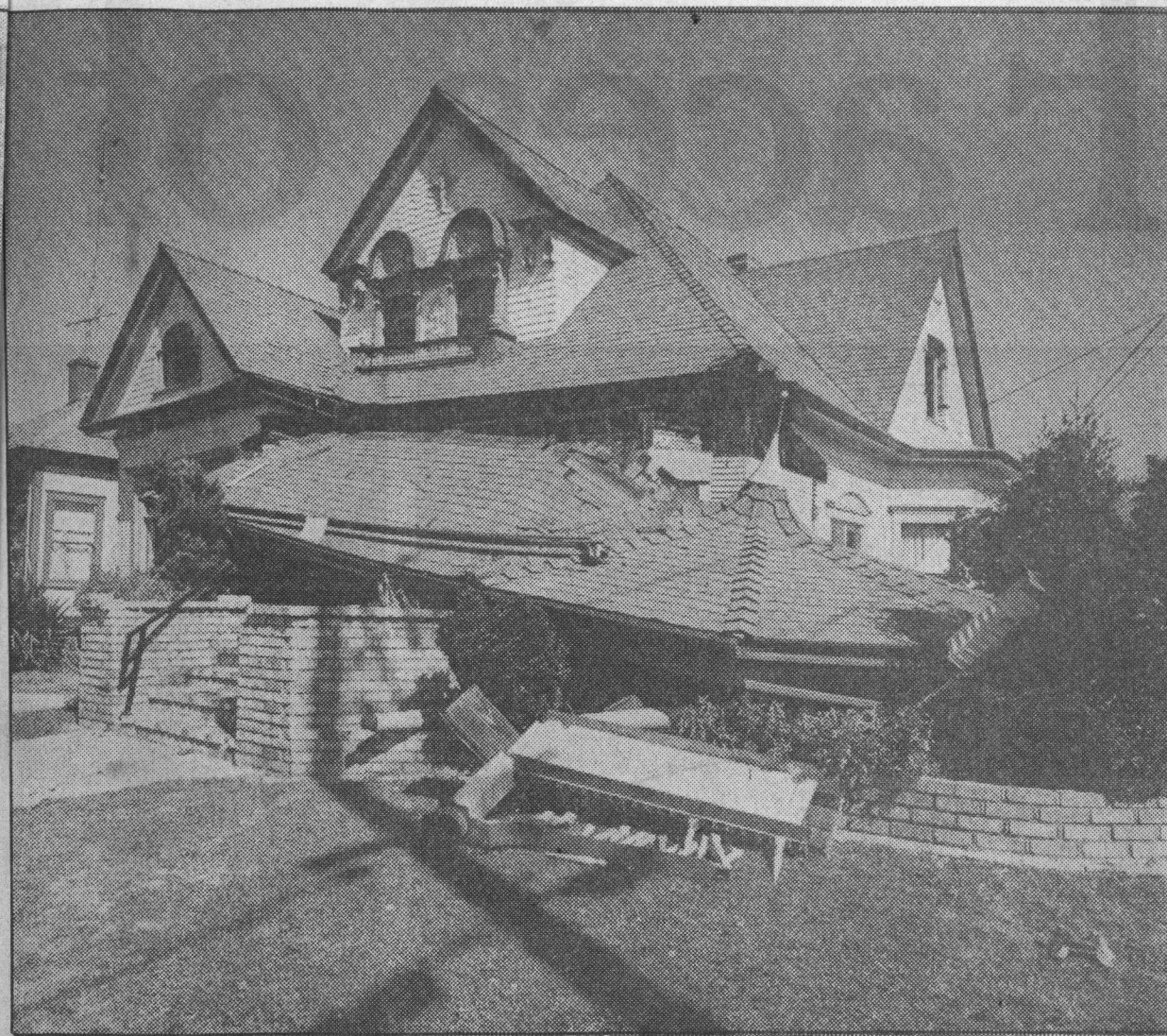


# THE QUAKE OF '89: The devastation

## WATSONVILLE



EXAMINER/KURT ROGERS



EXAMINER/KURT ROGERS

# north to south

**I**n Watsonville, ripples in the Southern Pacific railbed and the damage to the front of this house at Jefferson and Fifth show the force of Tuesday's shock waves. On Pacific Avenue in Santa Cruz, below, the damage to trees looks more like the aftermath of a hurricane than an earthquake.

