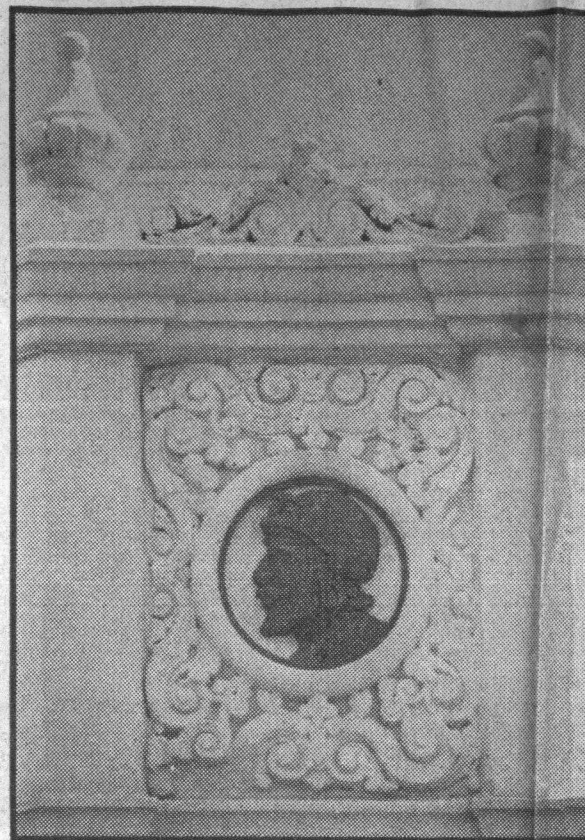


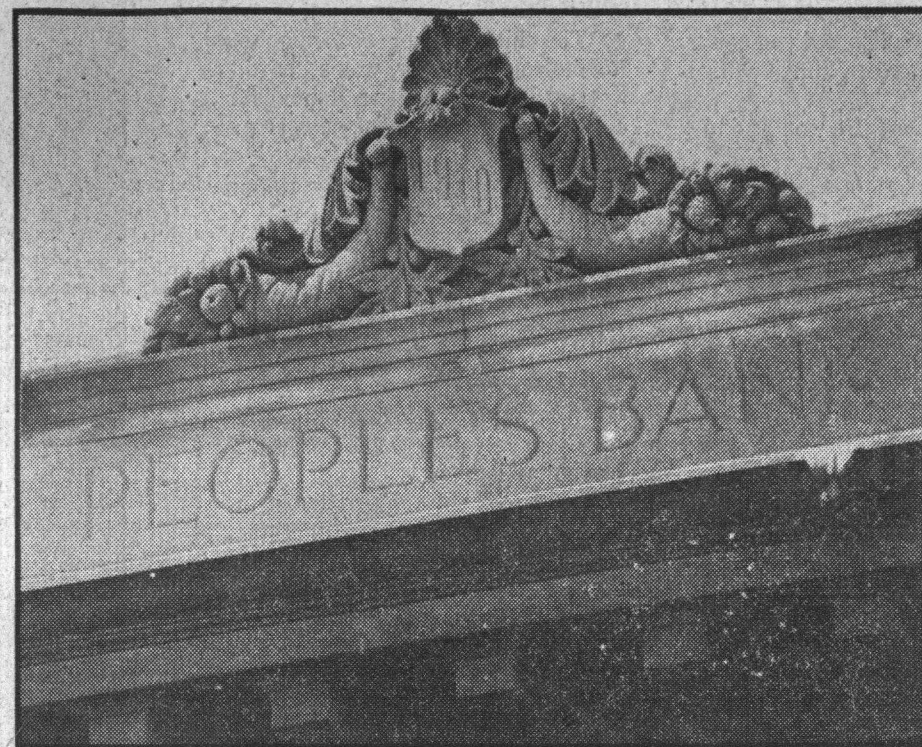
# Tree 'n Sea Living

Sunday, April 18, 1982 — Santa Cruz Sentinel—19

## A Blast From The Past — Architecturally



*Commercial Italianate and the  
St. George Hotel are virtually synonymous*



*The ID building is Neo-Classical Revival, 1910.*



*Richardsonian Romanesque, admired for its ornamental garlands, at 1364 Pacific Ave.*







*The Bank of America brought Moderne style to the mall in 1929*

By **BILL NEUBAUER**  
Sentinel Staff Writer

**T**HE PACIFIC GARDEN MALL HAS long been known as "the city's most beautiful street." But did you know it is also a vast outdoor museum of architectural treasures?

From the head of the mall at Mission-Pacific-Front streets to its termination at Cathcart Street are buildings which are cited in the city's Historic Building Survey as excellent examples of architectural styles.

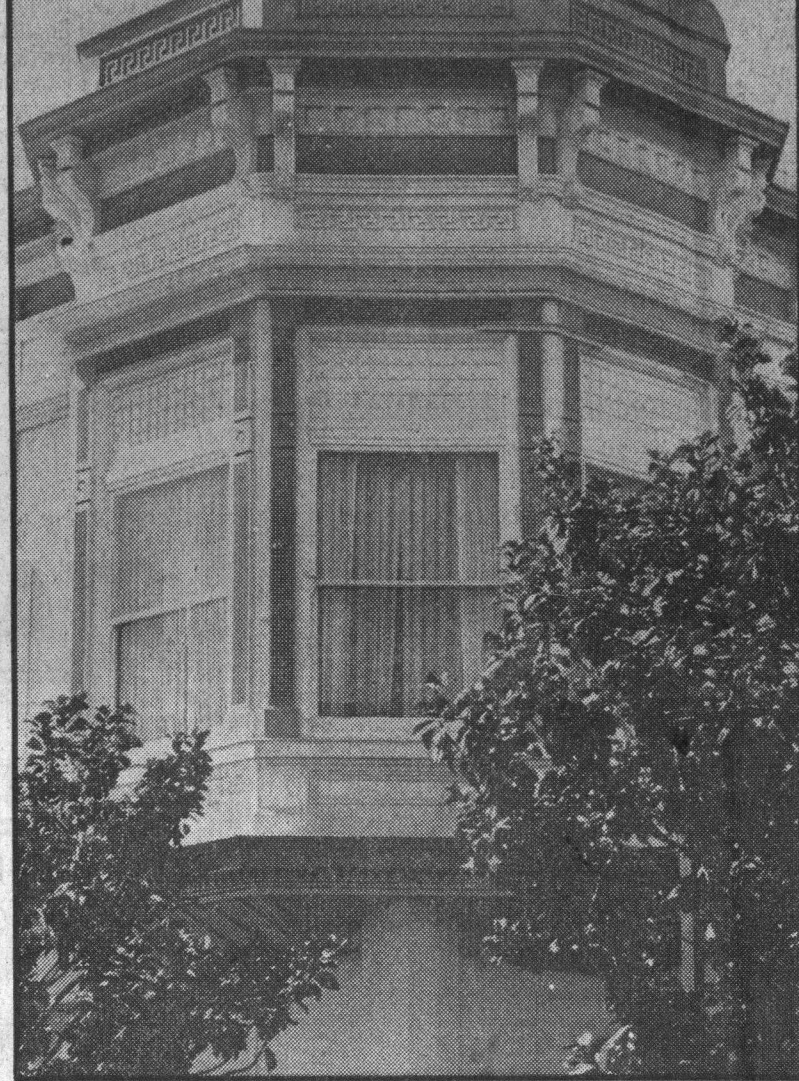
Care to see a ZigZag Moderne building?

Stop to admire the Bank of America building at 1134 Pacific, at the corner of Soquel. The building was constructed in 1929 under the direction of architect Harry Minton of San Francisco. The Pacific Street facade has four faceted pilasters, the two in the center bearing bas-relief plaques of Hermes-like figures. The cornice is in a zig-zag pattern.

Or is Colonial Revival your favorite architectural style?

Architect Edward L. Van Cleeck designed what is still known as the Elks Building at 1214 Pacific and then used the same style to develop the adjacent three-story building known as the Trust Building at 1208 Pacific.

The clean lines of the two structures, the broad eaves, rounded bays and garlanded band under the



*Octagonal corner bays of the Eastlake style at 1201 Pacific*

eaves have long made these buildings a favorite. They went up in 1910. The two-story building known as the Elks Building was for many years known as the Hotel Waldo.

Cooperhouse? This is probably the best-known building nationwide on the mall, famous for its outdoor cafe, music, shops and the crowds that gather in and around it daily. This was once the county courthouse. It was built in the Richardsonian Romanesque Revival style in 1894. During the construction a fascinating scandal was uncovered. It turned out that architect N.A. Comstock was less than competent and that he was embezzling money from the county, as well. But the work was continued by Thomas Beck, the construction supervisor, and there the building stands.

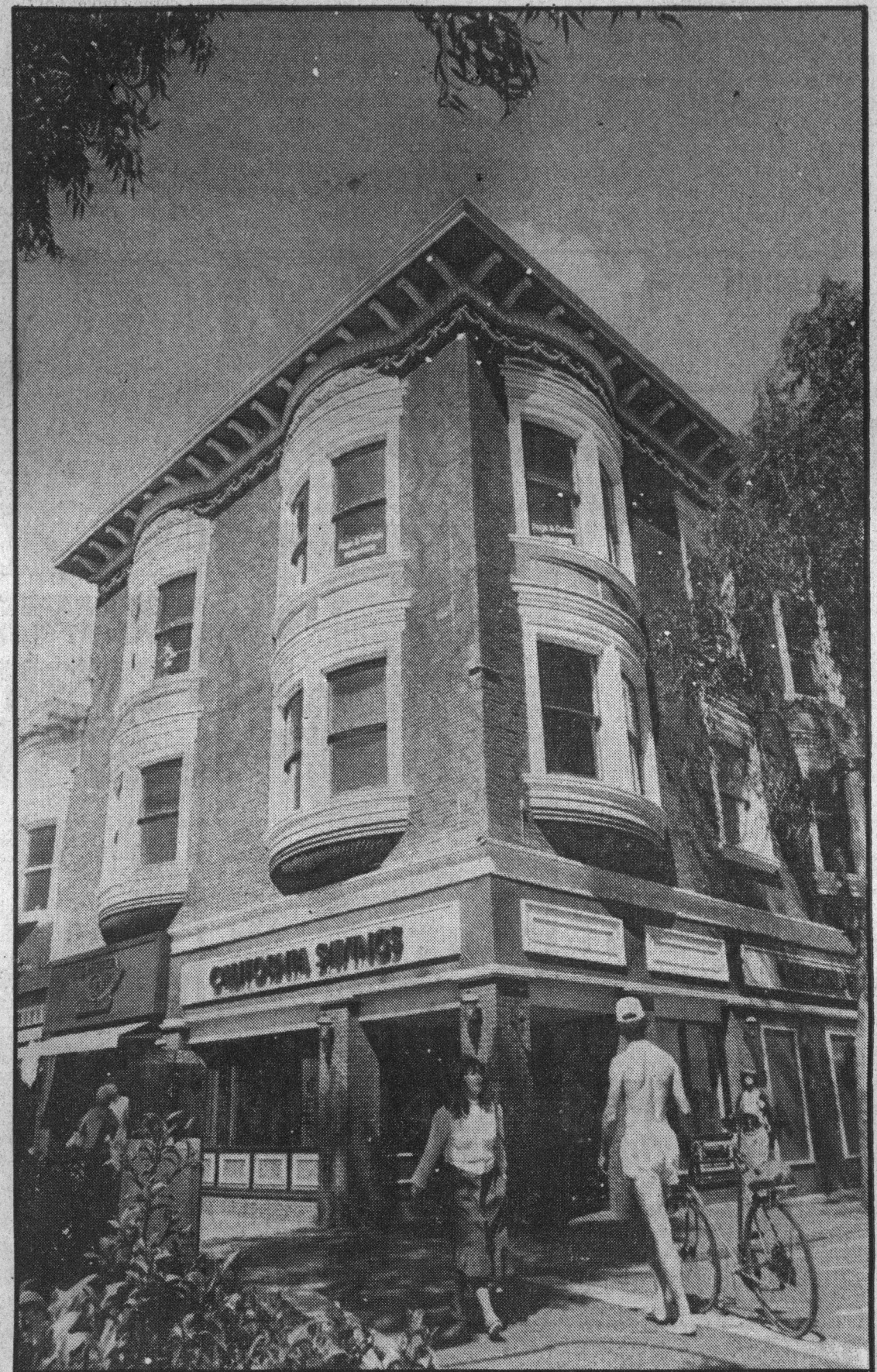
Mission Revival . . . Commercial Italianate . . . Eastlake . . . Renaissance Revival are represented in the outdoor museum, as well.

At 1111 Pacific is a three-story structure that used to be the Hotel Metropole. Built around 1908, it is in the Late Commercial Italianate style.

Two excellent examples of Mission Revival are the Jonas Block — 811-12-13 Pacific Ave. — and the County Bank of Santa Cruz headquarters building at 1502 Pacific Ave.

SEE PAGE 21

*The County Bank represents Renaissance Revival, 1894*



*The Trust building, Colonial Revival, 1910*

*Photos By Dan Coyro*