

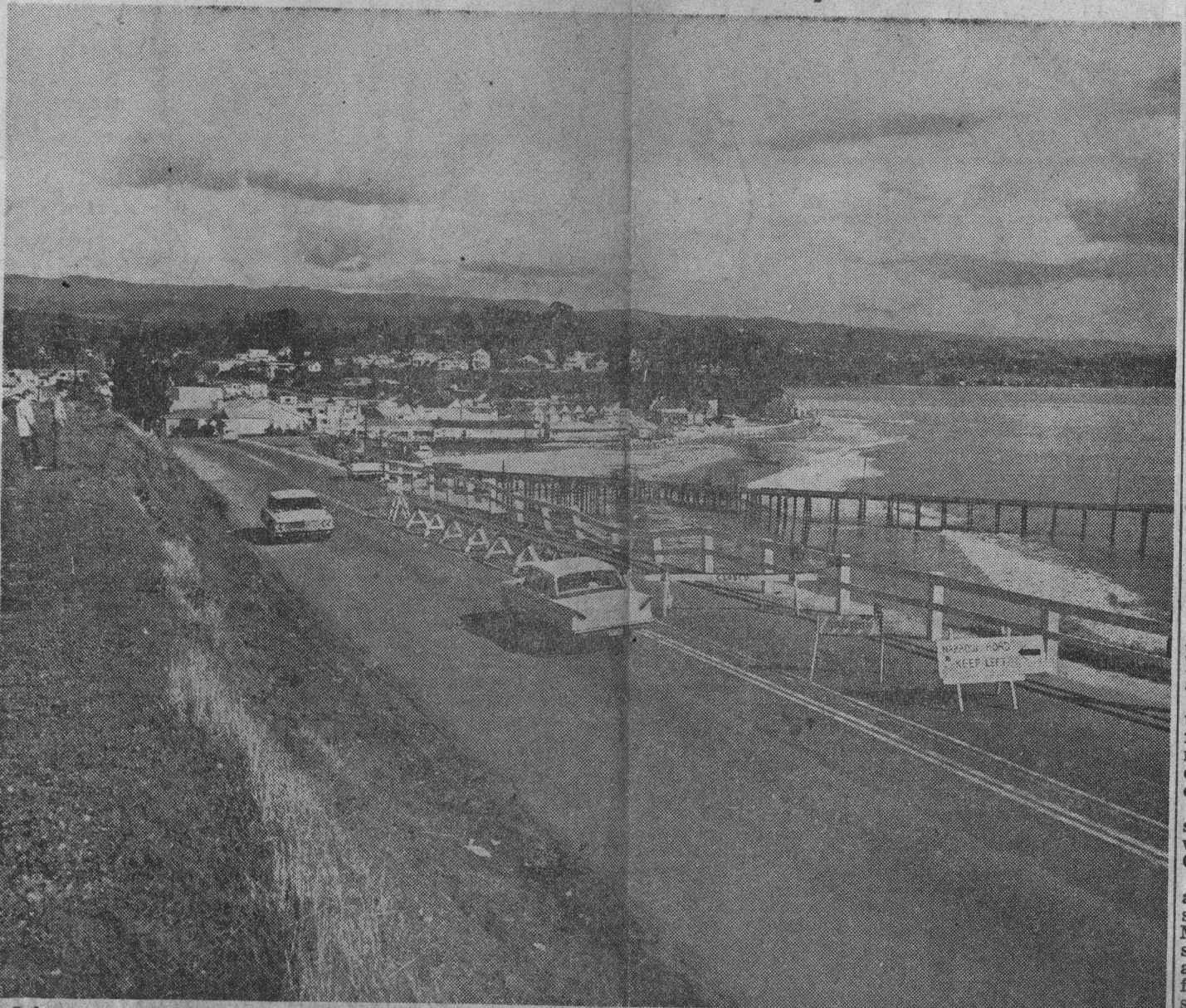
anta Cruz Sentinel

Serving Santa Cruz County for More Than 100 Years

★ ★ SANTA CRUZ, CALIFORNIA, SUNDAY, JANUARY 21, 1962 ★ ★

lls In Santa Cruz Mo

Opal Cliff Drive Is Narrowed By Storm



Only one-way traffic down

Bl
Fa
Sta

A
west
poran
U.S.
numb
Calife
Gra
in pro
Bitt
ern h
peratr
36 be
ord s
ed in
Tre
force
cause
ty da
tral C
moun
few h

A
post
ski
near
there
hour

The
punch
snow
areas

As
tinent
reau
men
er nMe
ern No

Blow
spread
was e
Colora

Los
and a
snow
Many
some o
and flo
four to
shores
More r
day

fol-
lice
said
ked
row
ews
will
venue
roxi-

t
r

ommu-
ce carry-
s south
ity Sat-
secret
00 feet.
of the
ved the
by mili-
s after
nd arm

ed off
was on
ilar in
merican
t Union
rs.
lled the
spy" and
"a grave

source said
flight of
ed up by
high alti-
cross the

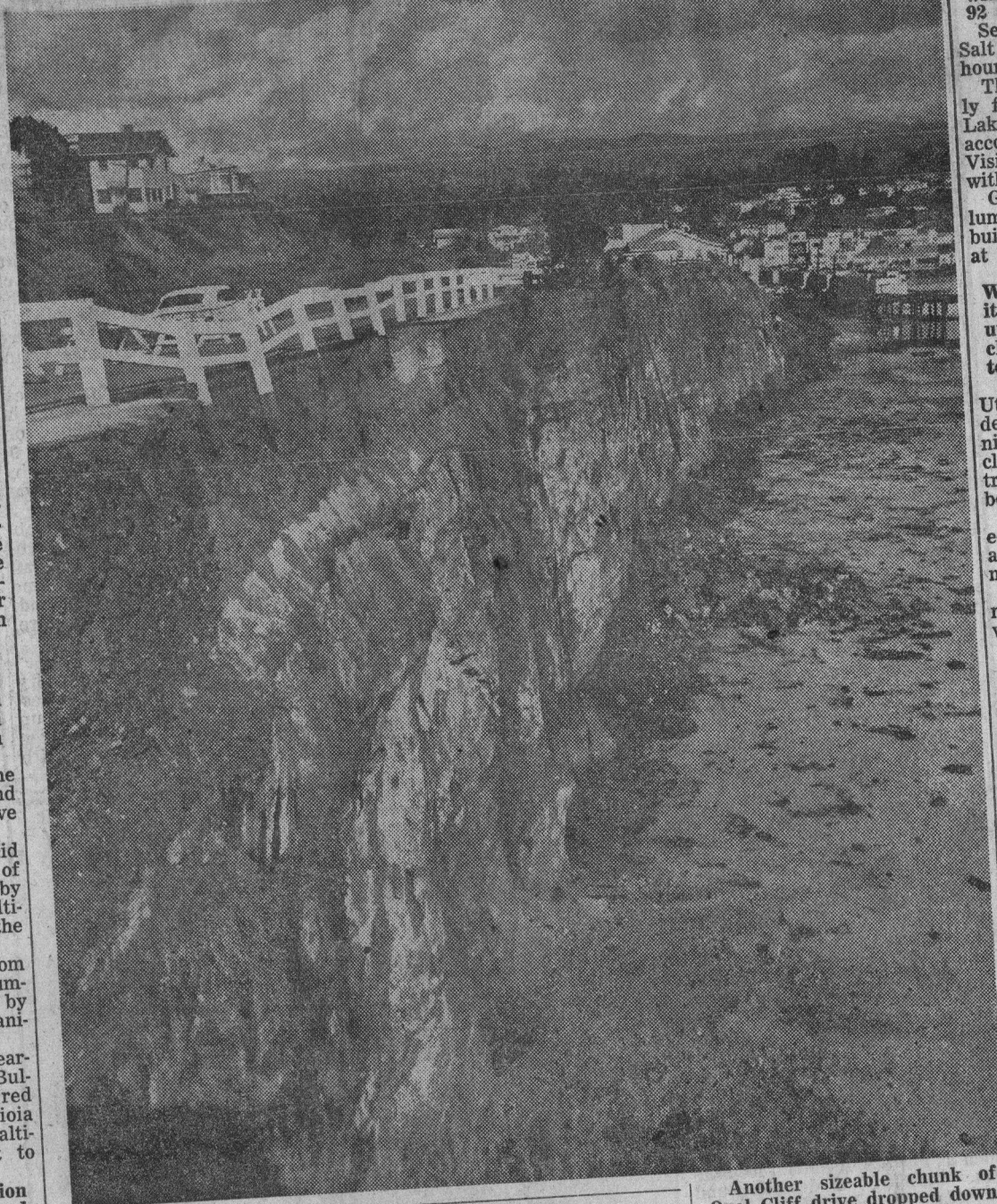
iles from
a medium-
erated by
ity Organi-

MIG, bear-
g, and Bul-
and red
over Gioia
to low alti-
effort to
nce.

indication
developed
or was
an or U.S.
area.

in a coastal
across the
nist Alban-
to the east,
nia by Yugo-

(Italian farm-
t from the
him to a hos-
about six
base.
ully armed
reconnaist-



Central Americans Ask Strong OAS Measures Against Castro

Punta Del Este, Uruguay (AP) — Central American delegates to the Punta del Este conference Saturday night made an implied threat to pull out of the Organization of American States unless strong measures are taken against Cuba Prime Minister Fidel Castro's regime.

They were protecting the Castro delegation — and also preparing to intercept 300 pro-Castro

viewed an honor guard at Uruguayan troops, the delegation left by car for Punta del Este.

Another sizeable chunk of Opal Cliff drive dropped down to the beach, allowing one-way traffic only following Friday's storm. Capitola Police Chief Marty Bergthold said about 10 feet of the road that leads into the city from Santa Cruz has eroded away in the last 10 years. Capitola city street crews will begin work tomorrow to widen the road by cutting into the far bank. Opal Cliff drive will be closed to vehicles for a week. They will be re-routed at 47th avenue to Capitola road.

wind gust
92 m.p.h.
Seven in
Salt Lake
hours.

The stor
ly from
Lake City
accompan
Visibility
within mi
Gale w
lumbia F
buildings
at Victo

The
Washing
it was
up to s
cleared
ton.

Califo
Utah bo
den stor
nia sec
closed a
traffic
both si

The
ed wes
and 50
miles v

Chair
mounta
ward.

Pla In Ar

Bal
killed
gine
and
of th
iff's

In
that
clear
er f
burn
dela
natu

D
pilo
a m
bou
dro
nea

I
but
vis
uti

dis
the
an
sc
mi

be
La
of
sa
B