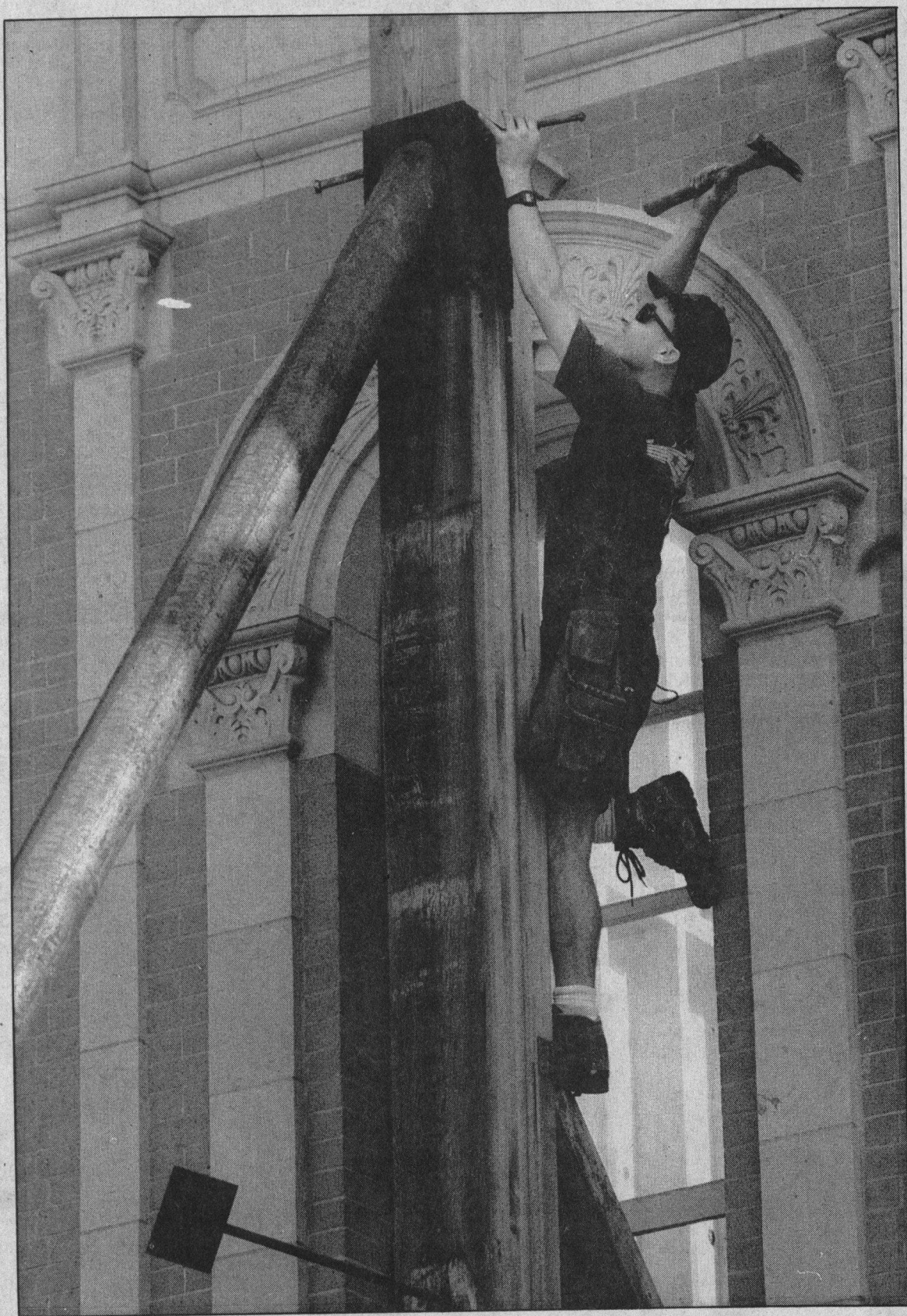


# Old wall, new insides



David Martin knocks a pin from one of the steel braces, above, that have been helping to support the walls of the 1894 County Bank building, right, on Pacific Garden Mall in Santa Cruz. Badly damaged in the 1989 Loma Prieta earthquake, the building has been gutted and a new two-story structure is being erected behind the Renaissance Revival-style walls. The five first-floor retail businesses and second-floor offices are expected to be ready in February.

