

Beach Houses Win Sunset Award

By MILDRED ANN SMITH
Sentinel Women's Editor

Take two 25-foot lots, a breathtaking panorama of Monterey Bay, build unique twin beach houses with an expanse of glass which brings the view inside — and you have a prizewinner.

Mr. and Mrs. Alan Simpkins did just this and the houses, designed for them by San Jose architect William May, received a special award in the 1965-66 Western Home Awards program sponsored by Sunset Magazine and the American Institute of Architects. The biennial program, which began in 1957, spotlights excellence of architectural design in homes built in the Far West and Hawaii. Of the 443 entries this year only 26 were award winners.

Unusual feature of the beach houses, which have the appearance of one unit, is that they are built on separate foundations on separate lots—and may be sold sepa-

ately. Separating them are two two-hour fire walls plus an air space.

As the owners explain it, with the side yard problem eliminated on the narrow lots they were able to obtain the maximum ground space for construction. And they really did. Each 1428 square foot house contains three bedrooms, two baths, a balcony studio which doubles as a guest room, kitchen and laundry room and a spacious floor to roof living room. Each has its own deck in front and a car port in the rear off of the alley.

Assisting in the planning of the houses and supervising the actual construction was Phyllis Simpkins who admits that houses are her hobby.

"Some women like bridge, others like golf—I like to build houses," she says.

The award winning twin houses aren't the first she's had a hand in. She became acquainted with the architect, William May, when she

worked with him on the \$300,000 Kappa Kappa Gamma sorority house at San Jose State college. And this summer, the Simpkins family bought a seven-year-old house on Eaton street and she and her children, Bob, 17, Bill, 15, and Diane, 12, remodeled and landscaped it.

Alan and Phyllis Simpkins, although they make their home in Los Altos, are not newcomers to Santa Cruz. Both have been spending their summers here since they were children. Her parents, Mrs. Walter Forward and the late Mr. Forward, were among the first residents of Paradise Park. Alan's parents, Mr. and Mrs. Edward L. Simpkins, purchased their property on Schwan lake more than 40 years ago.

The couple built themselves a new beach house on their lake front property two years ago.

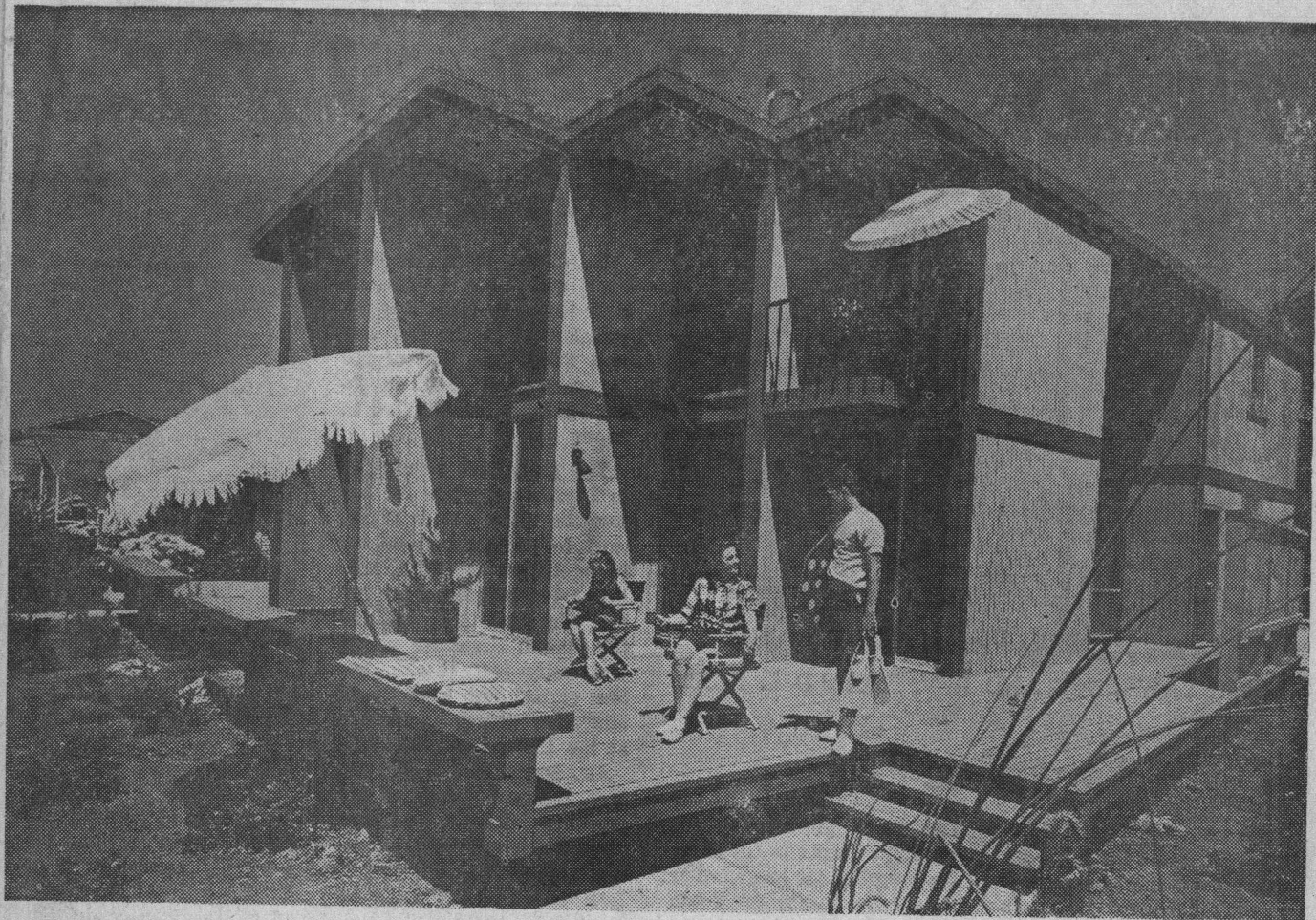
It was when they were told

it was possible the state might take over their lake property and realizing that choice beach front locations were going fast, that they decided to buy the Rockview drive property.

Alan Simpkins, who invented the telephone scrambler which prevents wiretapping, as well as other electronic devices, speaks for the whole family when he praises Santa Cruz.

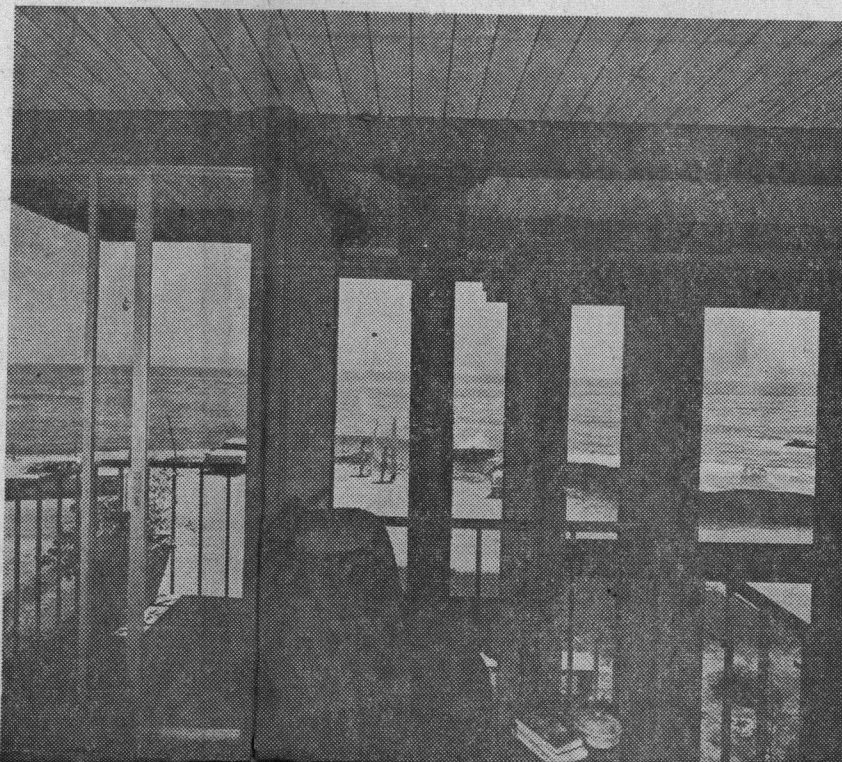
"We have found that the increased population has destroyed much of the original beauty of the Santa Clara valley," he says. "Santa Cruz, on the other hand, still has blue skies, fresh air and uncrowded streets. We enjoy the weekend escape and even find the evening fog refreshing."

Newest activity of the Simpkins family each weekend is sailing. Their 32-foot racing sloop, a Columbia Saber, is berthed at the yacht harbor.



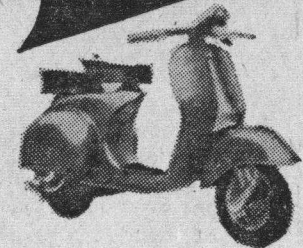
Photos by
Karl H. Riek

JUST A FEW STEPS from Monterey Bay on Rockview drive, Pleasure Point, are these twin beach houses, special award winners in the 1965-66 Western Home Awards program sponsored by Sunset Magazine and the American Institute of Architects. Designed by San Jose architect William May, they were constructed by Mr. and Mrs. Alan Simpkins of Los Altos and Santa Cruz. Enjoying the view from the spacious deck are Mrs. Simpkins, her daughter, Diane, and her son, Bill. The houses will be featured in the October Sunset.



Vespa

"The Smart Way To Go Places"

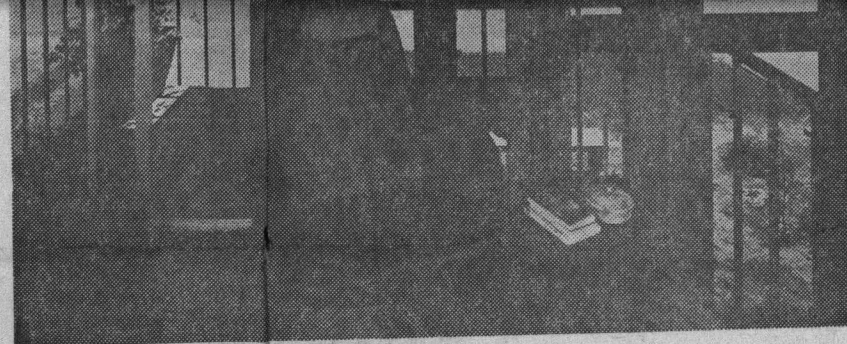
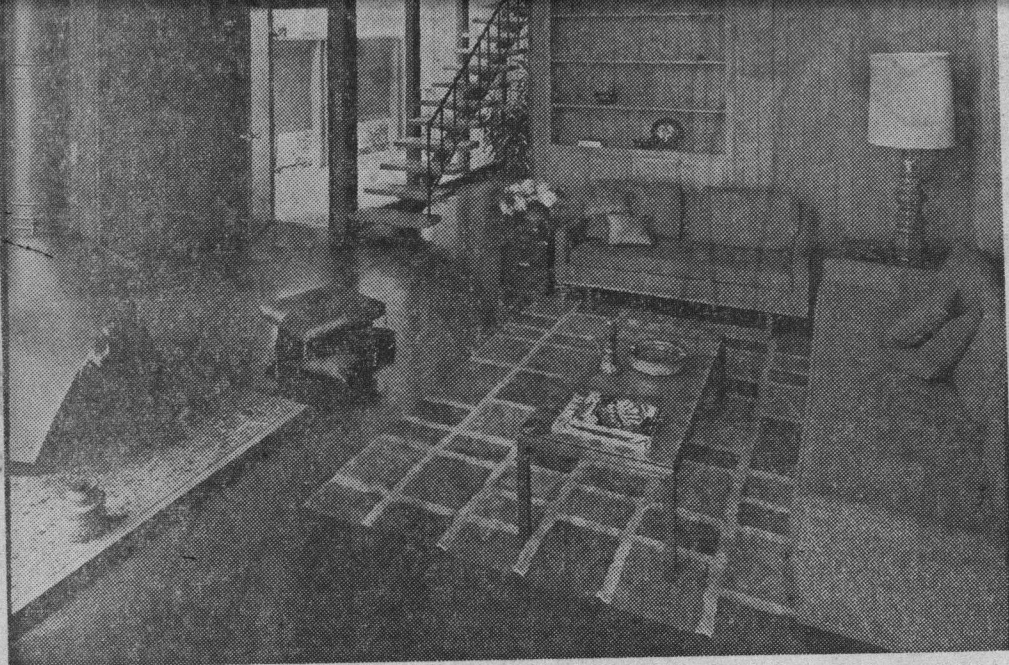


**PRICED
FROM
\$269**

● FORCED AIR COOLING

- Quiet performance
- Ease of operation
- Detachable wheels
- Unmatched carrying capacity
- Advanced styling
- Direct drive
- Full suspension front & rear
- Monocoque frame construction

B&D Motors



BALCONY STUDIO which overlooks living room also provides access to exterior balcony. Furnished with a studio couch, and comfortable chairs, it is ideal for relaxing, reading or just enjoying the view. It also can double as a guest room.

CEDAR SIDING of the exterior comes inside along with the breathtaking view in this floor to roof living room. Decorated by Roy Davenport of Haber's, it features shades of gold and brown with accents provided in the lime and blues featured in the rug and pillows. Hearth for the metal fireplace is exposed aggregate and floors in the downstairs area are covered with vinyl asbestos. The houses, which appear as one but are built on separate lots, have identical floor plans. In addition to the living room the downstairs includes a kitchen with an unusual amount of storage space, laundry, bedroom and bath. Access to the second floor is via stairway of cast concrete. Here there are two more bedrooms, a bath and the studio balcony which overlooks the living room. Carpeting is in a sienna shade.

**NEW
TRADITIONAL
PITCHER**
in **WALLACE
SILVERPLATE**

- Ease of operation
- Detachable wheels
- Unmatched carrying capacity
- Direct drive
- Full suspension front & rear
- Monocoque frame construction

B&D Motors

● SALES ● SERVICE ● PARTS ● BANK FINANCING

1301 Water Street Complete Repair Facilities
426-4161

