



CHANCELLOR'S MEMO

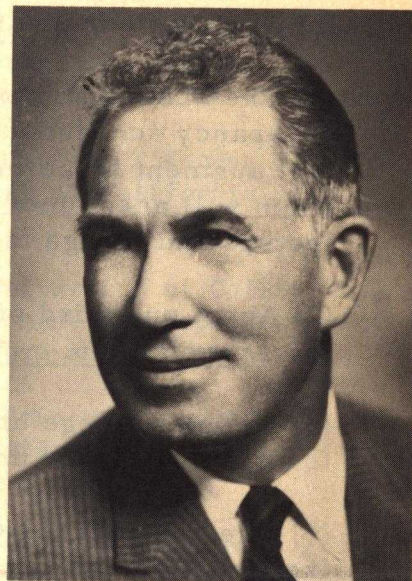
A NEWSLETTER FOR FRIENDS & NEIGHBORS

Volume 3, No. 2

April, 1965

PRINCETON SCHOLAR NAMED PROVOST OF COLLEGE TWO

Charles H. Page, professor of sociology and chairman of the department of sociology and anthropology at Princeton University has been named Provost of College Two.



Professor Page received his A. B. degree in history at the University of Illinois, and Ph. D. in sociology from Columbia University. He has taught at the City College of New York, Columbia and Smith College. He has been at Princeton since 1960.

His book, Class and American Sociology, first published in 1940, is a basic work in intellectual history and sociological theory and has been translated into Spanish and Japanese. A second book, Society, co-authored with R. M. MacIver and published in 1949, has editions in Spanish, Polish, Arabic, Hebrew, Japanese, Hindi, and Urdu. Professor Page was also co-editor of Freedom and Control in Modern Society and co-editor and co-author of Sociology and Contemporary Education.

Professor Page served as editor of the American Sociological Review from 1958 to 1960 and has contributed numerous articles and reviews to such professional journals as the American Journal of Sociology, Social Forces, Annals of American Academy of Political and Social Science, Journal of Social Philosophy and the Journal of General Education.

In commenting on the appointment, Chancellor McHenry said: "In the long search for leadership of the second college, we have looked for a social scientist who combined a substantial reputation as a scholar, an understanding and appreciation of the several approaches to the study of social phenomena, and the personal qualities to interest students and faculty in joining together in a company of scholarship. We have found such a person in Charles Page. He is at home in both the social sciences and humanities, is an effective teacher, and highly regarded by his colleagues. We are indeed fortunate to have a man of his caliber to head our second college with its modern social sciences emphasis."

Professor Page and his wife, Leonora, will move to Santa Cruz in late summer.

College Two was designed by San Francisco architect Joseph Esherick and will be constructed by Williams and Burrows of Belmont. The college will have 700 members, 450 of whom will "live-in". It is scheduled for completion in September of 1966.

PHYSICAL PROGRESS - During the past three months construction activity on the campus has been greatly increased.

- (1) Science Unit I is now about sixty-five per cent complete and will be available by early September. It will provide classroom and faculty offices during the first year of operation.
- (2) The partitioning of Central Services Building is underway and that structure should be ready for occupancy by late June. Administrative offices will occupy the second floor and the Library will occupy the ground floor during 1965-66.
- (3) The walls and ground floor of the Field House are essentially complete with occupancy scheduled for September. The additional shower and toilet facilities will augment those in the temporary student housing and the general purpose room will accommodate, in addition to physical education activities, the dining, lecture and lounge facilities.
- (4) About one third of the Library foundations are in with completion scheduled for August, 1966.
- (5) Cowell College underground utilities and plumbing are in and pouring of the foundations is now underway.
- (6) The contract for College Two has been awarded to Williams and Burrows, Inc., of Belmont for \$2,449,300 with work scheduled to begin by April 15.
- (7) A contract has also been awarded to Granite Construction Company of Watsonville for \$180,000 for the construction of a cross campus road from Empire Grade (about a mile above Western Drive) to connect eventually with the East Peripheral Road being constructed by the County.

Recap: three permanent buildings will be available for use by students and staff in September -- Science Unit I, Central Services and the Field House.

LONG RANGE DEVELOPMENT PLAN - Although officially approved by the Regents in September, 1963, printed copies only recently became available. Not intended as a definitive document, it will serve as a guide to the general development of the physical plant.

ANNOUNCEMENT OF UNDERGRADUATE PROGRAM - A bulletin describing the undergraduate program of instruction at Santa Cruz is now available. It includes a description of the undergraduate college, general requirements, methods of teaching, courses of study, a listing of the faculty and general information on fees, housing, financial aid, physical facilities, the community and a brief history of the University of California.

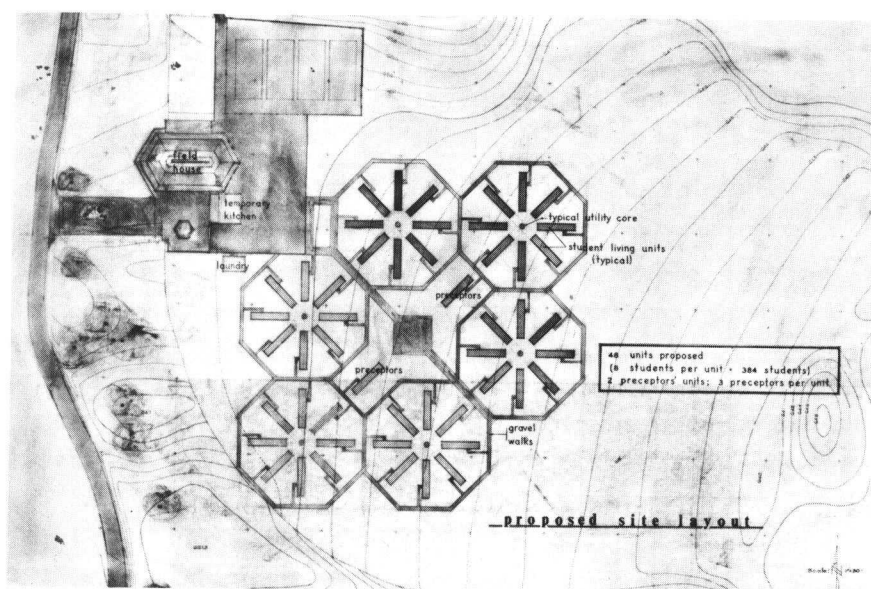
ACADEMIC APPOINTMENTS

- GEORGE T. AMIS - Acting Assistant Professor of English; B.A., Amherst College, M.A., Ph.D. cand. Yale University; Faculty member at Williams College; Woodrow Wilson Fellow.
- GABRIEL BERNIS - Acting Assistant Professor of Spanish; B.A., M.A. University of Wisconsin, Ph.D. cand. Ohio State University; Former faculty member at Ohio Wesleyan and Ohio State Universities; Director of the University of Wisconsin's Special Language Program (summer) at the Instituto Tecnologico, Monterrey, Mexico.
- DAVID C. BLUMENFELD - Acting Assistant Professor of Philosophy; B.A., Northwestern University, M.A., Ph.D. cand. University of California, Berkeley.
- CHARLES WALLER DANIELS - Acting Assistant Professor of Biology; B.A., University of New Mexico (literature), M.S., University of Hawaii, Ph.D. cand. University of California, Berkeley; USPHS Predoctoral Trainee, Cancer Research Genetics Laboratory.
- YVETTE R. DE PETRA - Associate in French; Licence-es-Lettres Diplôme d'Etudes Supérieure, University of Nancy, France; Former faculty member University of California, Los Angeles and Stanford University.
- WILLIAM DOYLE - Assistant Professor of Biology; B.A., Ph.D. University of California, Berkeley; Faculty member Northwestern University; Vice Chairman, Developmental Section, Botanical Society of America; Author: Nonvascular Plants: Form and Function.
- WILLIAM R. HITCHCOCK - Associate Professor of History; B.A., Princeton University, M.A., Ph.D. Yale University; Faculty member University of California, Los Angeles; Author: The Background of the Knight's Revolt, 1522-1523.
- MARY WOLMES - Lecturer in Art; B.A., Hollins College, M.A., University of Iowa; Former faculty member Ohio State University and University of California, Los Angeles; Studied cultural history and painting in Berlin, Paris, and at the Art Students League in New York; professional painter.
- BHUWAN JOSHI - Assistant Professor of Psychology; B.A., Tri-Chandra College, Nepal, B.Ed., M.Ed., Central Institute of Education, Delhi, M.A., University of Oregon, Ph.D. University of California, Berkeley; Former faculty member College of Education, Kathmandu, Nepal; Visiting Lecturer, University of California, Berkeley.
- ROGER KEESING - Acting Assistant Professor of Anthropology; B.A., Stanford University, Ph.D. cand. Harvard University; Research on the social organization and other aspects of the Kwaio culture, British Solomon Islands.
- LEONARD KUNIN - Acting Assistant Professor of Economics; B.A., University of Pennsylvania, B.S. (Elec. Engr.), Columbia University, M.A., Ph.D. cand. University of California, Berkeley; University Fellow, University of California, Berkeley.
- RONALD J. LARSEN - Assistant Professor of Mathematics; B.S., M.S. Michigan State University, Ph.D., Stanford University; Faculty member at Yale University.
- RICHARD MATHER - Assistant Professor of History; B.A., M.A., Ph.D. University of California, Berkeley; Faculty member San Francisco State College; Research in medieval history at University of Bologna.
- JACOB MICHAELSEN - Assistant Professor of Economics; B.A., M.B.A., Ph.D. University of Chicago; Faculty member University of California, Berkeley; Ford Foundation Graduate Fellow.
- CARL MORRIS - Acting Assistant Professor of Statistics; B.A., California Institute of Technology, M.S., Ph.D. cand. Stanford University; National Science Foundation Fellow.

ACADEMIC APPOINTMENTS

- ANDREW TODD NEWBERRY - Assistant Professor of Biology; B.A., Princeton University, Ph.D. Stanford University; Recipient of National Academy of Sciences - National Research Council Postdoctoral Research Fellowship for work at Universite Libre de Bruxelles and the Roscoff Laboratory, France.
- RAYMOND NICHOLS - Acting Assistant Professor of Government; B.A., University of Kansas, B. Litt., Oxford University (Rhodes Scholar), Ph.D. cand. Princeton University; Woodrow Wilson Fellow; Danforth Fellow; Publications include studies for the Commission on Constitutional Revision, State of Kansas.
- JOHN PIERCE - Acting Assistant Professor of Classics; B.A., University of Toronto, B.A., Cambridge University, Ph.D. cand. Princeton University; Woodrow Wilson Fellow; Fulbright Scholar.
- RICHARD R. RANDOLPH - Assistant Professor of Anthropology; B.A., Ph.D. University of California, Berkeley; Faculty member Rice University; Field work in Mexico and with the Bedouin Arabs in the Negev desert of Israel; Ford Foundation Foreign Area Fellow; Social Science Research Council Training Fellow.
- DAVID RATNER - Acting Assistant Professor of Literature; B.A., Cornell University, M.A., Ph.D. cand. University of California, Berkeley; Woodrow Wilson Fellow, Advanced Graduate Fellow, University of California, Berkeley.
- JASPER ROSE - Associate Professor of History; B.A., M.A. Cambridge University; Faculty member Cambridge and Rice Universities; Painter, art critic and historian; Co-editor of the Cambridge Review; Art critic for Time and Tide; Co-author (with John Ziman) of Camford Observed; An Investigation of the Ancient English Universities in the Modern World.
- DONALD H. RUBY - Assistant Professor of Biophysics; B.A., Ph.D. University of California, Berkeley; Former faculty member University of California, Berkeley; National Science Foundation Post-doctoral Fellow (in biophysics), Massachusetts Institute of Technology.
- N. MANFRED SHAFFER - Assistant Professor of Geography; B.S., Columbia University, M.S., University of Wisconsin, Ph.D., Columbia University; Visiting Lecturer, University of East Africa, Kenya; Former faculty member at Northwestern University; Field work in Mozambique and South Africa; Author: The Competitive Position of the Port of Durban.
- HOWARD B. SHONTZ - Assistant Chancellor - Student Services; B.S., M.Ed., University of California, Davis; Former Registrar and Admissions Officer, University of California, Davis, Director of Admissions, University of California; Consultant on management procedures to the University of Indonesia, under auspices Ford Foundation and U.C. Economics Project (1962).
- ROBERT J. WERLIN - Acting Assistant Professor of Sociology; B.A., Brandeis University, Ph.D. cand. Harvard University; Woodrow Wilson Fellow.
- STANLEY M. WILLIAMSON - Assistant Professor of Chemistry; B.S., University of North Carolina, Ph.D. University of Washington; Faculty member University of California, Berkeley; Research on the chemistry of the Xenon compounds.
- THOMAS A. VOGLER - Assistant Professor of Literature; B.A., University of Chicago, M.A., Ph.D. Yale University; Faculty member at Yale University.
- JULIA ZAUSTINSKY - Associate Professor of Music; B.A., Stanford University, M.A., Columbia University; Diploma, Juilliard School of Music; Faculty member Hunter College of the City University of New York; San Francisco Symphony Orchestra; President's Fellow (for research in musicology), Columbia University; First Place, National Society of Arts and Letters Violin Competition; Pulitzer Award in Critical Writing.

TEMPORARY STUDENT HOUSING AND FEEDING - Since the physical facilities of Cowell College will not be available for the first year of operation, the Regents have authorized the lease of 48 mobile units, 10 x 55 feet, each housing eight students. The units will be arranged in six radial clusters of eight each on the athletic field east of the Field House. Each unit will have bathroom facilities and be equipped with a gas-fired water heater and furnace. Said Cowell Provost Page Smith: "These twentieth century covered wagons will hopefully carry a new group of pioneers on a journey of educational discovery. We think the inconvenience will be balanced by the novelty of the enterprise." Western Star Mobile Homes of Santa Clara will provide the units.



An arrangement for feeding operations with Saga Food Service was also approved by the Regents. Under the agreement, Saga will set up a kitchen on the east porch of the Field House and provide 20 meals a week for all resident students as well as lunches and one dinner weekly for commuting students who so desire. Part of the Field House will be equipped with tables and used as a dining hall, large lecture hall, and study area.

Under these arrangements, it is estimated that resident students would pay approximately \$300 per quarter for room and board, equivalent to rates prevailing on the existing campuses.

ACADEMIC PLAN - A revised version of the Academic Plan for the Santa Cruz campus was approved by the Regents at their January meeting. It incorporated developments of the last two years; brief sketches of the emphases and styles of the first eight colleges; a proposal that academic credit be organized on a course rather than a credit hour basis and setting the number of courses needed for graduation; establishment of campus-wide requirements with considerable latitude provided to colleges in ways of meeting these requirements; a discussion of forms of instruction, including seminars; channels and responsibilities for judgments on appointments and promotions; refinement of the proposal for "cooperative education" in professional schools involving work/study alternation; refinements in the section on research specialties including the removal to Santa Cruz of the Lick Observatory group and enumeration of special resources now available in marine biology; a calendar of year-round operation on the quarter system; and development of adult education facilities and other programs for continuing education.

CHARTER DINNER - Over 435 persons attended the third annual Charter Dinner sponsored by the Affiliates on March 30.

Photographer-naturalist Ansel Adams was the speaker. Copies of his remarks are being printed and will soon be available upon request.

In the photo (left to right) Regents Theodore R. Meyer, Mrs. Edward R. Heller and Donald H. McLaughlin; Affiliates President Forrest Murdock; Ansel Adams; and Chancellor Dean E. McHenry.



ADMISSIONS - As of March 1 nearly 1500 applications had been received for the 600 places available at Santa Cruz in October. Under redirection procedures, the first eighty per cent of the qualified students who apply will be admitted. This group has been so notified. The remaining twenty per cent will be chosen from the remaining qualified applicants. All students to be admitted at Santa Cruz will be notified by April 15.

FACULTY CONFERENCE - A meeting was held at the end of January of all faculty appointed to date at the Pleasure Point beach house of a friend of the University. The academic group reviewed and developed general plans for teaching and student life in Cowell College, developed plans for specific curricular offerings and described course offerings in the major fields for 1965-66.