

Weather Report

Temperature for the 24-hour period ending at 8 a. m. today — Maximum 69, minimum 54.

Monterey Bay Area — Rain with south winds, 25-35 m.p.h., today and early tonight; rain and wind diminishing during night; partly cloudy tomorrow.

Santa Cruz Sentinel

Serving Santa Cruz County for More Than 100 Years

Guaranteed Paid Circular

of the Sentinel yesterday was

14,960

MISSED PAPER: If you phone GA 3-4242 before 6:30 p. m. a special messenger will deliver a Sentinel to you if you live within city limits.

103rd Year—No. 222 Entered as second class matter at the Post Office at Santa Cruz, California ★

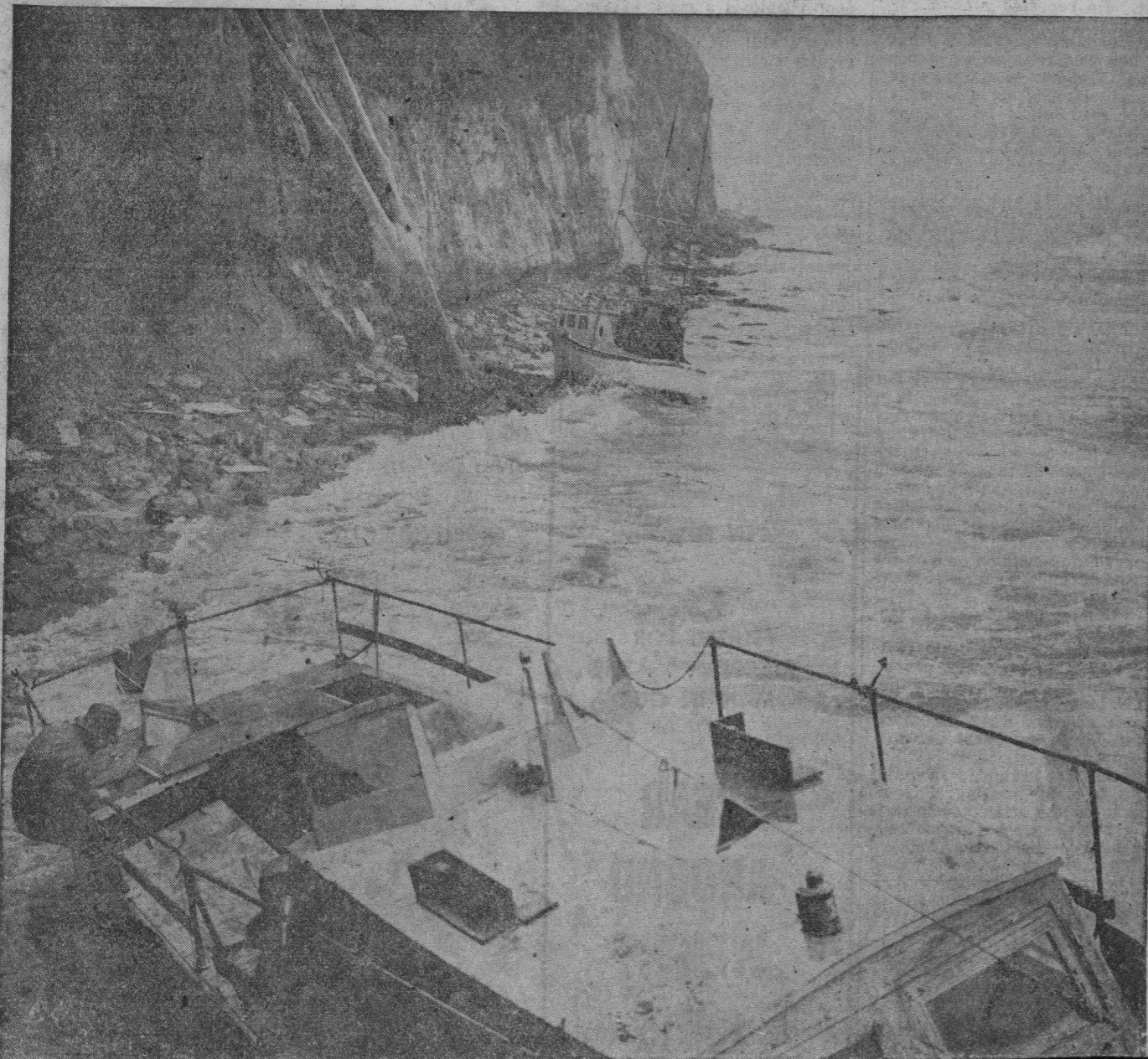
SANTA CRUZ, CALIFORNIA, FRIDAY, SEPTEMBER 18, 1959 ★

10c Sunday and Daily Excepting Saturday

EIGHTEEN PAGES

13 Fishing Boats Damaged In Storm

Pleasure, Fishing Craft Smashed By Storm



Heavy Rainfall Lashes Area

By Wally Trabing

An unprecedented September storm unleashed its fury along the coast early this morning, destroying two fishing boats and tossing 11 others on the beaches of Santa Cruz and Capitola.

Thirty to forty mile an hour winds drove rains inland with no sign of let up at noon. By 11 a.m. rainfall totals in the Scotts Valley and Bethany Park area had reached four inches. A noon report for the Santa Cruz area indicated 1.75 inches for the storm.

Waves at Capitola sent the 36-foot party fishing boat "Jo Gene" on the rocks behind the old Saba site at 10 a.m. It was owned by 71-year-old L. J. Adams of Capitola. He had no insurance on the boat and rated the loss at \$2000. He watched his boat crunch against the seawall for a while, then turned away. "It hurts," he mumbled.

Soon to follow and wallow against the Jo Gene was a 26-foot fishing boat owned by Dr. Andrew Markovits, of Rio Del Mar. Bystanders said the doctor also came down briefly to the wall, saw that his boat could not be saved and went away, saying he did not want to see it die.

Five other boats washed ashore on the sandy Capitola beach. At noon, Allen Foulk, co-operator of the Concrete garage, who used his tow truck to pull some of the boats up the beach, said two more fishing boats were loose and heading for the rocks near the Jo Gene.

At Santa Cruz, storm warnings last night had prompted about 25

Tow Truck Saves Boat



The stormy sea was kinder to these pleasure craft at Capitola beach this morning. John Burke, co-operator of the Concrete garage near the beach had

the unusual task of employing his tow truck to pull the boats ashore in the driving rain. One of the boats was rolled over

and sustained some damage. Owners of the crafts were not immediately identified. Seven craft were washed ashore by noon at Capitola.

Khrushchev Asks Relaxing Of International Tensions

United Nations, N.Y. (AP)—So possible to undertake crusades, as

Gov. Brown To Address



The sudden September storm unleashed thrashing breakers which tore these two boats loose from their sea moorings this morning at Capitola, and at the time the photo was taken they were beating them to destruction. In the upper picture, the fishing boat in the background belongs to Dr. Andrew Markovitz, 117 Stephen road, San del Mar. In the foreground the well-known 36-foot party fishing boat owned by L. J. Adams, 2611 Capitola avenue, Benning, Cabrillo college's athletic director, helps guide the cabin cruiser "Ol' Soph" to the Santa Cruz beach, with the aid of Bill Fravel, an employee of the Seaside company, Cape.

Vanguard III Satellite Soars Around Earth

Cape Canaveral, Fla. (AP). — The Vanguard III satellite soared into orbit today and revived sagging U. S. prestige in the space exploration field.

The 100-pound satellite was boosted aloft by the last of the Vanguard rockets. The Vanguard, once the scapegoat for American space failures, thus ended its hard luck history on a triumphant note.

The success followed two straight American space flops. Just 14 hours before, a Thor-Able rocket fizzled in an attempt to place a 265-pound navigation satellite in orbit. On Wednesday, a Jupiter missile carrying mice and frogs on a space flight exploded 1000 feet above its launching pad.

The flops came while Soviet Premier Nikita Khrushchev visited this country, basking in the limelight of Sunday's successful Soviet moon strike.

The satellite was the third put up in 11 tries by the Vanguard. It includes the 50-pound payload and the 50-pound third-stage rocket, which remained attached.

Its job was to measure the earth's magnetic field, solar X-rays, micrometeorite bombardment and temperature inside and outside the satellite.

Shaped like an ice cream cone, Vanguard III is made of mangelium and figerglass. It consists of a 20-inch sphere with a 26-inch tube extending from it. The tube is tapered from 6 to 2½ inches in diameter.

In the tip of the cone is a magnetometer to measure the magnetic field and help locate pockets of dangerous radiation. The information may help man draw a map of the safest route to the moon and other planets.

Nine hours after the launching the National Aeronautics and Space Administration announced in Washington that radio signals from the satellite were coming in loud and clear.

On the basis of information received so far, NASA said Vanguard III is following a path that takes it 2329 miles from earth at its most distant point, and 319 miles away at its closest point. The orbit is inclined 33 degrees north and south of the equator.

As it swings down to the low point of its orbit, something equivalent to a downhill slide, it is traveling 18,567 m.p.h. At the top of the orbit, its speed is 12,631 m.p.h.

NASA officials estimated the satellite would remain aloft for 30 to 40 years. They said its radio equipment should operate for about three months.

Shopping Center Is Planned Near State Park Drive

Plans for the development of a mammoth shopping center—only a short distance from the proposed Blue Pacific shopping center—were announced this morning.

The shopping center will be located on 12 acres at the intersection of the Santa Cruz-Watsonville freeway and State Park drive, according to James Fenton, owner of a San Jose advertising agency.

A \$5 million combination shopping center and garden type apartments will surround the Blue Pacific Mobile Homes park in a 50-acre tract across from the Poor Clare Nuns retreat.

Freak Accident Critically Hurts SLV Resident

A car slid off a jack last night and Arnold Mickley, Route 1, Box 390, Bean Creek road, suffered critical head injuries.

He was taken to county hospital by Chet's ambulance service. The exact nature of his injuries is still undetermined.

The accident occurred behind the Swiss chalet, four miles north of Boulder Creek along Highway 9.

...fishing and pleasure boat owners to move their crafts to Moss Landing.

All did not heed the warning, however. Four 12 to 18-foot cabin cruisers broke their moorings this morning and washed on the beach. Two more, a sailing boat and fishing boat, capsized near the wharf, still affixed to their anchors.

Malio Stagnaro, president of the Cottardo Stagnaro Fishing corporation, reported that a "hell of a fleet" of albacore fishing boats was in trouble from 90 to 100 miles out. He said most had a big run on albacore and were loaded. "Some are probably throwing some overboard to keep from swamping," he said.

He picked up a radio report from Don Hart of Santa Cruz, about 90 miles out. One man reported seeing a body floating, but was too busy to investigate.

"I've been around here 50 years," he said, "and this is the worst storm I've ever seen in September. The winds are south and moving southeast. This will cause heavier seas."

Santa Cruz Weatherman Robert Burton said at noon that the rainfall is the heaviest on record since September, 1918, when 2.60 fell during the same period.

John Burke, 531 DuFour street, was pulled from the sea this morning when his small dory swamped as he was rowing out to check another boat. Ed Twohig, owner of the Santa Cruz Boat Rentals on the municipal wharf, saw Burke, and went to his rescue. He was not injured.

Damage to agricultural crops was not known. Matt Mello, county agricultural commissioner, said he expects it will help the apples and damage the tomatoes, lettuce and strawberries depends on how long the storm will last.

The unexpected storm caused a number of power failures. Frank Thomas, Santa Cruz manager of Pacific Gas and Electric company, reported the following: 5:20 a.m., beach area, one hour; 6:40 a.m., Capitola, Opal Cliffs and Live Oak, 15 minutes; 6:42, High and Mission streets area, 40 minutes; 7:23, industrial area on upper Mission street, 15 minutes. He said most of the failures were caused by pole fires and water shorting.

No slides were reported on county roads, but "rocks as big as autos" reportedly rolled onto the Oceanshore highway near Waddell creek, and small mud flows were noted on Highway 17 along the construction zone just out of Santa Cruz city limits.

Rainfall reports from around northern Santa Cruz county up to 8 a.m. were: Boulder Creek, 1.90; Felton, 1.60; Davenport, .10; Capitola, 1.8 (at 10 a.m.); Scotts Valley and Bethany Park, 4 inches at 10 a.m.

At 10 a.m. a slide on Water street near Branciforte drive was reported. Workmen were clearing the road.

DEADLOCK IN STEEL STRIKE CONTINUES

New York (AP). — Top negotiators for the steel industry and the United Steelworkers of America today adjourned talks until Monday with another report of no change in the long deadlock.

JAMBOREE CANCELED
Heavy downpour forced cancellation of the CCAL Jamboree scheduled for Ord stadium. As thought the event would be at Salinas tomorrow but the six "games" canceled altogether.

INDEX

.....	11
.....	6
.....	13-14-15
.....	12
.....	17
.....	4
.....	17
.....	16
.....	5
.....	3
.....	9
.....	16
.....	16