

Photo Gallery of Pacific Avenue: Photographs and Post Cards From the Santa Cruz Public Libraries' Collection

1860



This photo shows the junction of Pacific Avenue and Front Street around 1866. At that time Pacific Avenue was called Willow Street. Front Street was known as Main Street and dead-ended.

Pacific Avenue and Front Street

Circa 1882--1892

Here is a later photograph of junction of Pacific Avenue and Front Street. It is probably between 1882 and 1892. Notice the horsecar tracks running down Pacific Avenue.



Pacific Avenue and Front Street

1880s

A parade down Pacific Avenue in the 1880's. The street that you can see intersecting on the right is Soquel Avenue.



Parade on Pacific Avenue



Aftermath of the 1894 fire

1894

This is how Pacific Avenue looked after the fire of April 14, 1894. A large section of buildings between Pacific and Front Streets were leveled.

Circa 1916

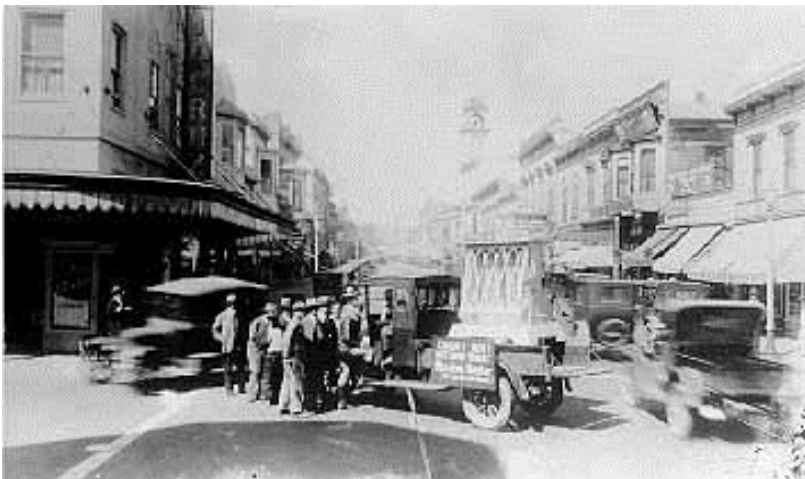
Up the street, on the right, is the I.O.O.F building. At the top of the building is the town clock which now stands at Water Street and North Pacific Avenue.



Looking up Pacific Avenue

1920s

Notice the truck in middle of the street. That odd-looking object on the back is a large model of a toaster. The truck is advertising it by hauling it around town.



Truck on Pacific Avenue

It is the library's intent to provide accurate information, however, it is not possible for the library to completely verify the accuracy of all information. If you believe that factual statements in a local history article are incorrect and can provide documentation, please contact the library.