

Three SCHS Grads Tour New Harbor High School Campus

Three Santa Cruz High School graduates recently joined officials of the Santa Cruz High School District in a tour of Harbor High School now nearing completion.

The school is located on LaFonda Avenue between Highway 1 and Soquel Avenue.

Touring the \$3-million facility, now 80 per cent completed, were Dan Bias, SCHS '51; Geno J. Pini, '44; and Rod Atchison, '44. They were accompanied by

Don Starr, a member of the Santa Cruz City Board of Education, and Norman Walters, supervisor of music at Santa Cruz High School and chairman of Citizens for Better Schools.

Citizens for Better Schools, with headquarters at 811 Pacific Avenue, is spearheading the campaign for passage of a tax measure at a special election on February 20.

Voters then will be asked to approve an increase

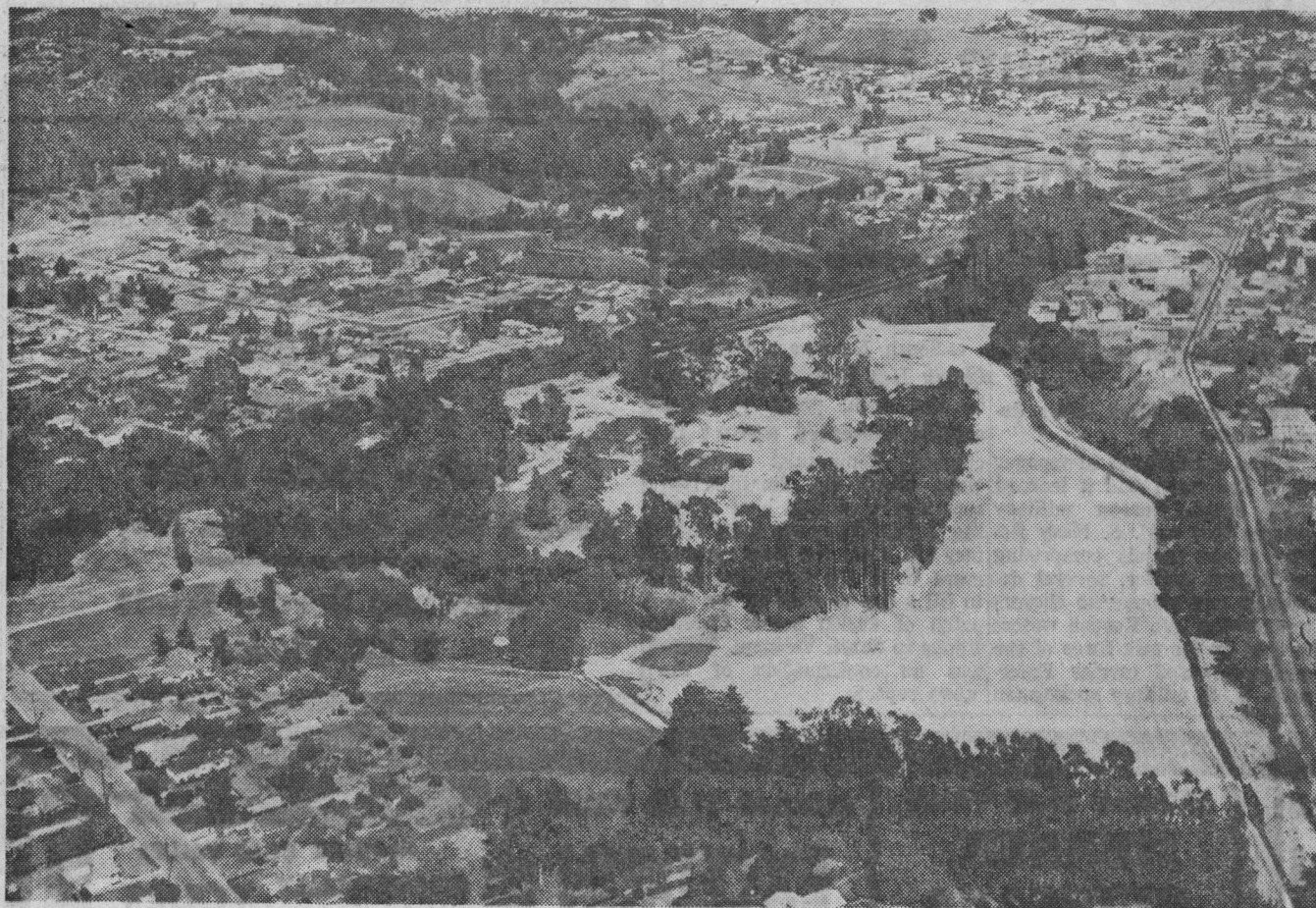
in the operating tax rate of the Santa Cruz High School District to provide funds needed to open and operate Harbor High School this fall.

The proposal calls for an increase in the operating tax rate from 85 cents per \$100 of assessed valuation to \$1.32.

Revenue also would be used to restore programs and services curtailed or eliminated in recent years as econ-

omy measures following defeat of previous tax increase requests.

Keith Shaffer, president of the board of education, has stated that Harbor High will open only if the tax measure is approved. Plans call for initial enrollment of 900 students. The opening of the third high school will relieve congestion at Santa Cruz and Soquel High Schools.

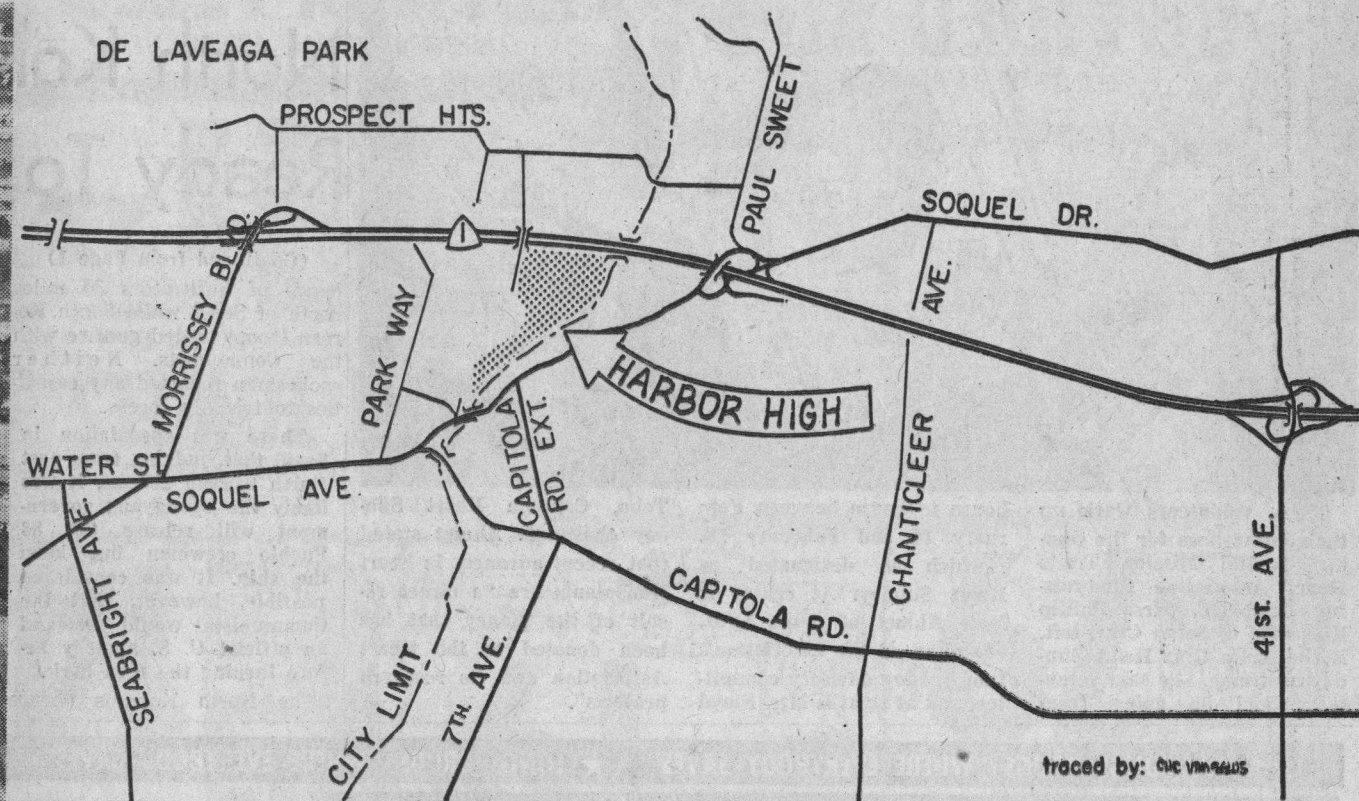


This aerial photo provides a striking view of the Harbor High School campus. In lower right the playing fields will be located, and to the left of the eucalyptus trees is

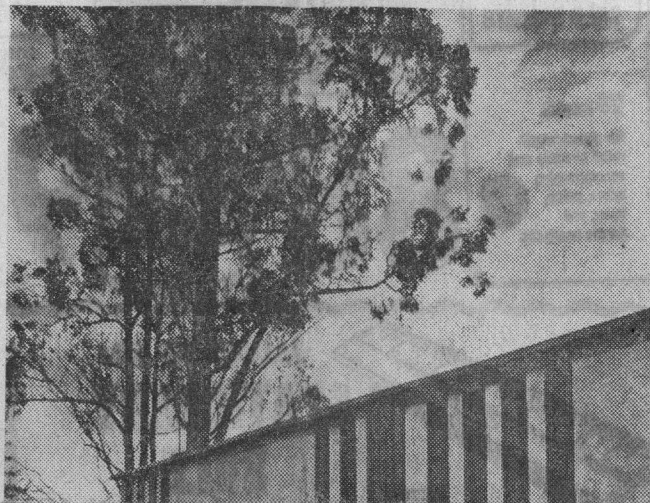
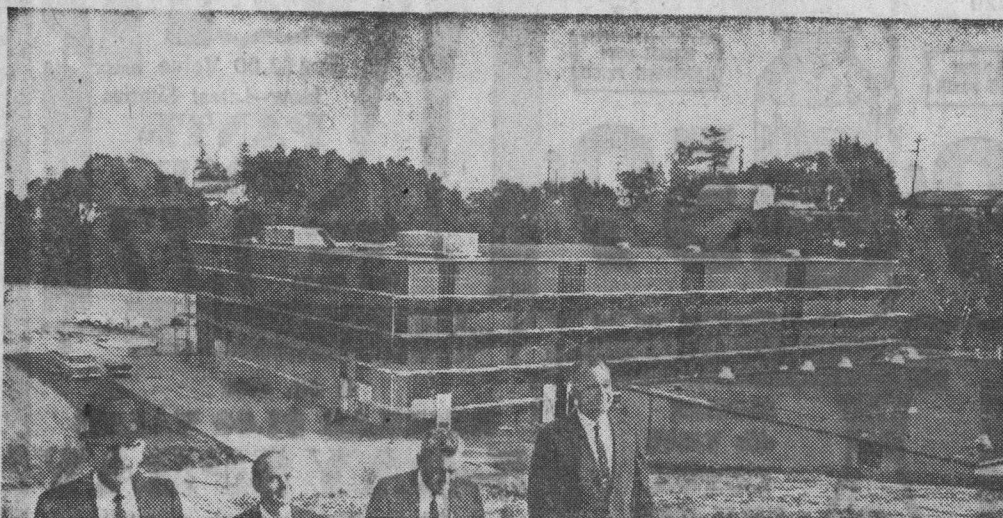
the upper campus where major academic buildings now are nearing completion. The road at far right is Soquel Avenue, and running through the center of the picture is

Highway 1. Beyond the freeway is the new Santa Cruz Dominican Hospital. General contractor on the Harbor High project is George W. Davis of Watsonville. Project inspector

is Tom Tilden, a member of the class of 1927 at Santa Cruz High School. When completed and opened, Harbor High will relieve overcrowding at Santa Cruz and Soquel High Schools.



To get to the new Harbor High School, visitors can follow the directions as outlined on the map pictured above. Opening of the new school is dependent upon passage of a tax override proposal on February 20 in the Santa Cruz High School District.





Moving from the lower campus to the upper level, Norman Walters and his guests climb the central steps that link the two portions. In the background are the gymnasium and shower and locker rooms.



Conferring on one of the impressive walkways that link the two portions of the Harbor High campus.

RETIRE!
At the Famous
Casa del Rey
Retirement Hotel

- \$125 to \$215 month**
- Two balanced meals daily
 - Planned social program
 - Fireside lounge — Elevators
 - Four Shuffleboards—TV rooms
 - Free guest limousine service
 - Beauty & Barber Shop
 - Dentist—Doctor on call 24 hrs.
- No Entry Fee—Free Brochure

CASA DEL REY HOTEL
120 Cliff St., Santa Cruz, Calif.
Dial 426-2800



SCHOOL NEWS



Located At Soquel High

Openings Exist In Parent Education Nursery School

Openings are available for youngsters of pre-kindergarten age in the Parent Education Nursery School being conducted at Soquel High School. Children between the ages of 2½ and 3½ years attend each

Tuesday and Thursday from 9 until 11:30 a.m. Youngsters who are 3½ and some pre-kindergartners meet on Monday, Wednesday and Friday during the same hours, and a session for pre-kindergartners only is conducted on Tuesday, Thursday and Friday from noon until 2:30 p.m. About 20 children are enrolled in each session.

Lori Duarte is the instructor.

The program encompasses indoor and outdoor activities, including block and toy play, dramatic play, water and sand play, easel painting, clay modeling, finger painting, crayon drawing, collage work, simple woodwork and music appreciation.

There is also story time and a mid-session snack.

Shirley Buell provides special music and movement activity each week for the pre-kindergarten groups.

Parents of each child must participate in the activities at least once every two weeks and one parent also must attend three night classes each month.

Cost of the two-day-per-week session is \$8 per month, and \$10 for the three-day-per-week program. Tuition grants are available.

Additional information may be obtained by calling Lorie Scott at 423-5031.

**ROOFING
INSULATION**

C. Wheat Co.

Dial 423-3371
Licensed Insured

On the lower campus, a major building is the structure that will house classes in the fine arts. Beyond it is the gym. Plans call for Harbor High to open with an initial

enrollment of 900 students this fall in freshmen, sophomore and junior classes. The facility is designed for an enrollment of 1200 students.



Norman Walters (in hat), chairman of Citizens for Better Schools, joins the group on the lower campus, where the gymnasium, locker and shower rooms, and the fine arts building are among the major facilities now being completed. Walters' organization is spearheading the campaign to secure voter approval of a request to increase the Santa Cruz High School District's operating tax rate from 85 cents per \$100 of assessed valuation to \$1.32. Funds generated by the increase will provide operating revenues needed to open Harbor High School this fall and relieve overcrowded conditions at Santa Cruz and Soquel High Schools, officials state. Voters will act on the request at a special election on February 20.

Sewing Classes At SCHS, Soquel

A new series of sewing classes taught by Beverly Gambello and sponsored by the Santa Cruz Adult Education School will begin this week at Santa Cruz and Soquel High Schools.

At Santa Cruz High, the class will meet Tuesday night in room 3 and at Soquel High on Thursday night in room 205. A \$1 lab fee is charged.

The courses will emphasize fitting and alteration of patterns.

major buildings of the upper campus are three Santa Cruz High School graduates — Dan Bias, '51; Geno J. Pini, '44; and Rod Atchison, '44; and

Don Starr, a member of the Santa Cruz City Board of Education. In the background is the homemaking-graphic arts building.

The "House Detectives" of the Multiple Listing Service of Santa Cruz Board of Realtors select

HOUSES OF THE WEEK

★ SANTA CRUZ:

**230 PESTANA AVE.
Santa Cruz Gardens**



WHAT A HOUSE!!! Everything here that a family could desire including minimum yard work with time to enjoy this lovely home. Entertain friends and/or keep your teenagers happy at home with huge lower level entertainment center with its own fireplace. 3 large bedrooms, 2½ baths, tiled entry, garage door opener. Priced at \$31,250.

★ SAN LORENZO VALLEY:

**188 ELEANA DRIVE,
Ben Lomond**



4 BEDROOMS, DELUXE . . . 1½ years old, Custom home. Fully insulated. Flagstone fireplace with heatalator, plus tiled entry, paneled family room, separate service room . . . Country living with City quality of dishwasher and double ovens. Price may be below reproduction costs at \$28,950.

These homes are being offered for sale by all members of the Multiple Listing Service of the Santa Cruz Board of Realtors.

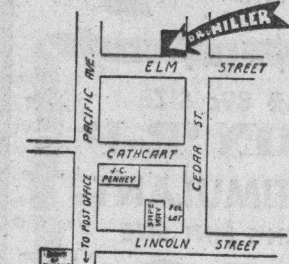
DENTAL PLATES

with

Dr. MILLER

NOW IN HIS BUNGALOW
DENTAL OFFICES

**413 CEDAR ST.
SANTA CRUZ**



DR. J. P. MILLER
Formerly associated with
Dr. J. C. Campbell

EASY CREDIT TERMS

SPECIAL CREDIT TO PENSIONERS

Dr. J. P. MILLER, Dentist Ph. 423-1911



**WELCOME
NEWCOMERS**

Call us and a Hostess will welcome you to the Community with information of where to shop. Gifts from over 40 leading Merchants. And points of interest in the area.
PHONE 426-4995 524 SOQUEL AVE.

**FREE RENTAL SERVICE TO
LANDLORD AND TENANT**