

WATERSHED COMMITTEE MEETING ON PROBLEM IN BEN LOMOND, MARCH 9

'Evidence of excessive erosion is everywhere'

"Clean, silt-free gravels for salmon and steelhead spawning are practically non-existent."

That comment about the San Lorenzo River comes from the County Office of Watershed Management, which is planning a meeting in Ben Lomond on Thursday, March 9, to discuss erosion and siltation problems in the San Lorenzo River watershed.

The meeting of the San Lorenzo River Watershed Plan Advisory Committee will begin at 8 p.m. at Highlands County Park.

The erosion problem is outlined in a statement from the watershed management office:

"Most people recognize that there are already serious problems with siltation of the San Lorenzo River.

"The flood control channel through Santa Cruz is filled with silt more than one

to two feet above its natural grade.

"Small tributary streams run much muddier than they used to, and everyone can see the thick deposits of sand left along the banks of the river from the last storm.

"Although erosion and siltation are natural processes, the magnitude of erosion has been so accelerated by human activities that the amounts of silt have reached these problem levels.

"Evidence of excessive erosion is everywhere: gullies along private and public roads, soil washing from bare house pads and slumps along road cuts. Erosion seems to be so commonplace in the San Lorenzo watershed that it is taken for granted by many people.

"But if we are to protect the river, excessive erosion can no longer be taken for granted."

Interested persons have been invited to

join the San Lorenzo River Watershed Plan Advisory Committee in a discussion of the steps needed to control erosion.

Among questions to be addressed are:

-Where are erosion problems most severe?

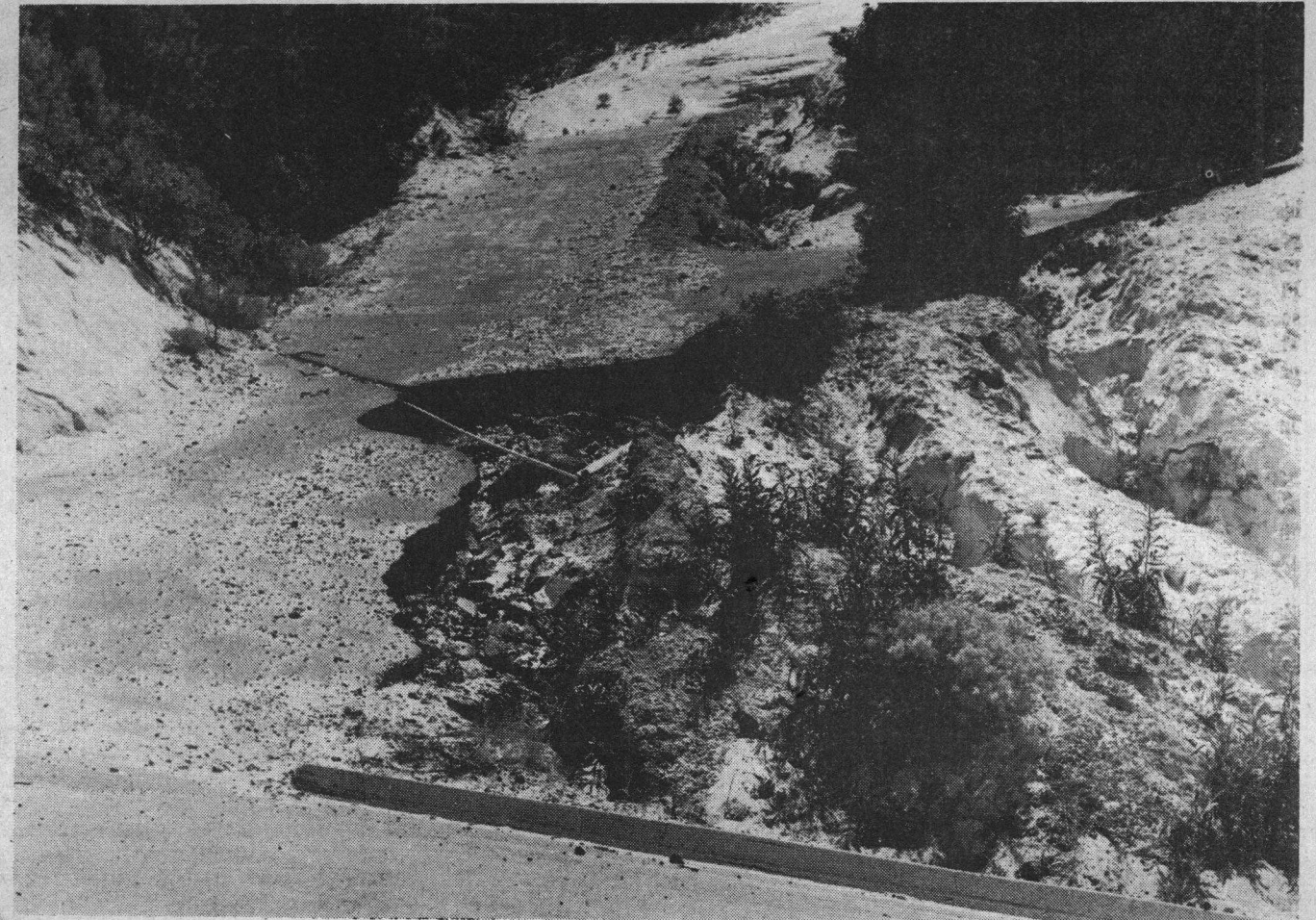
-How stringent must erosion control measures be?

-Who will bear the cost of erosion control, the property owner or the public?

-Is land use regulation necessary to control erosion in unstable areas?

The results of next Thursday's workshop will be incorporated in the San Lorenzo River Watershed Management Plan. This plan is due to be completed in December of this year, with a draft plan available in October.

For more information, contact John Ricker of the county watershed management program at 425-2375.



**Ben Lomond
erosion**

Here's an example of the erosion that is such a problem in the San Lorenzo Valley. This picture, taken about a year-and-a-half ago, shows a private paved driveway in Ben Lomond off of Quail Hollow road. It has since been repaired to some extent, but was in the condition showed here for some time.

Flagman, motorist fight

A motorist who was irked by a long traffic delay on Highway 9 last Tuesday became involved in a fight with a flagman for Granite Construction Company, which has been working along Highway 9 for several months.

According to Sheriff's reports, the motorist said he waited in line for a long time and then was stopped again just as he got to the flagman.

When he asked what the delay was, the flagman answered unnecessarily rudely, according to the driver, and that started a flow of verbal abuse from both sides.

Then, the driver said, the flagman swung at him through the window of his car.

The motorist claimed that as he got out of his car to defend himself, he was attacked by at least five other workers.

Road crew members, however, said they saw the driver assaulting the flagman first, and went over to see what the dispute was about.

Both parties told the responding Sheriff's deputy they wanted to press charges, but no arrests were made at the scene.

Facial scratches and bruises were sustained by the driver and the flagman.