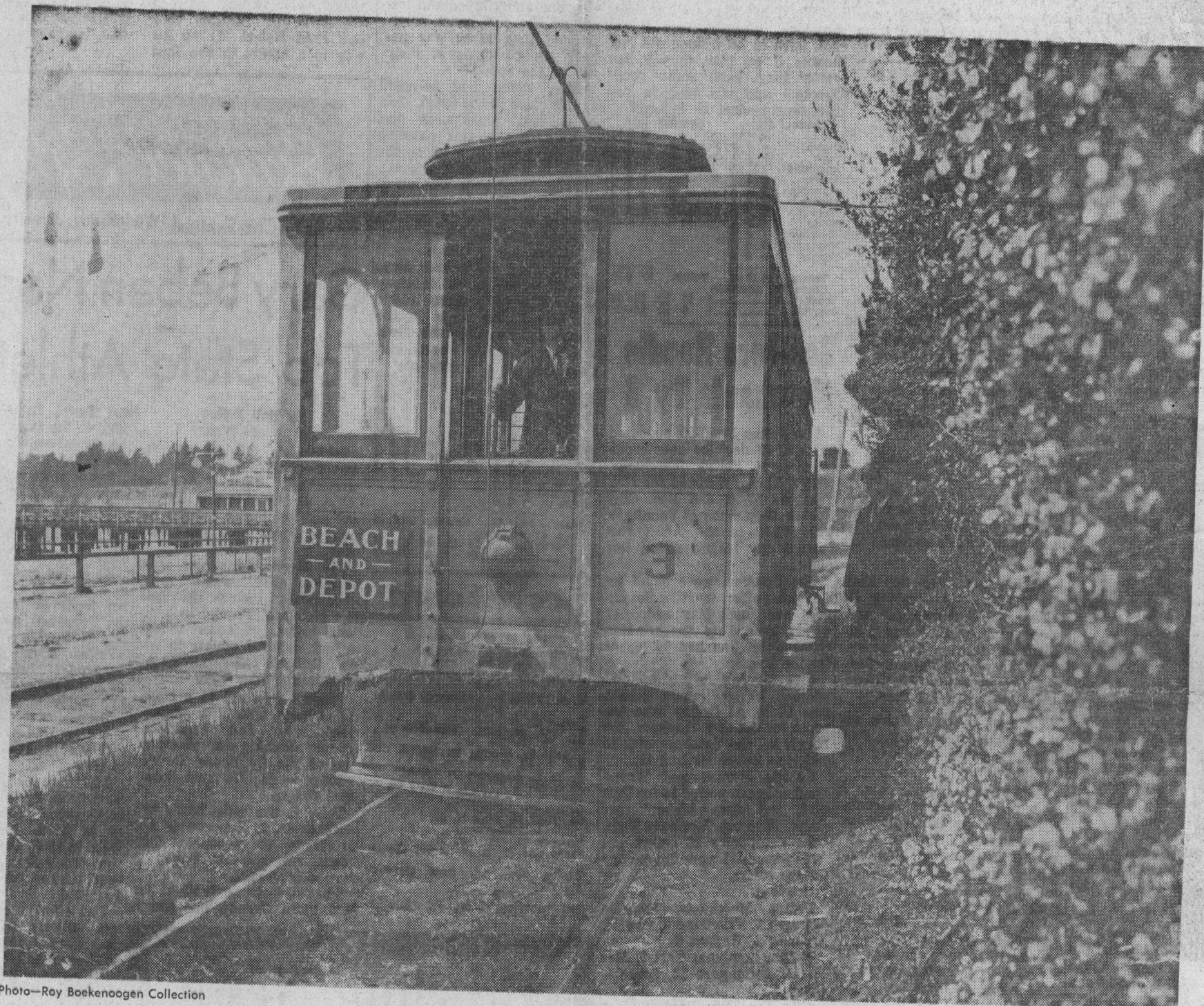


1908 — 1968



Photo—Roy Boekennoogen Collection

This street car ran from downtown Santa Cruz to the beach casino. The present municipal wharf in the left background.

**Savings deposits made
by January 10th earn a
full 5% per annum compounded quarterly from
January 1st—**

ASK ABOUT OUR NEW HIGHER EARNING SAVINGS CERTIFICATES

Santa Cruz Savings



AND LOAN ASSOCIATION
SINCE 1908

