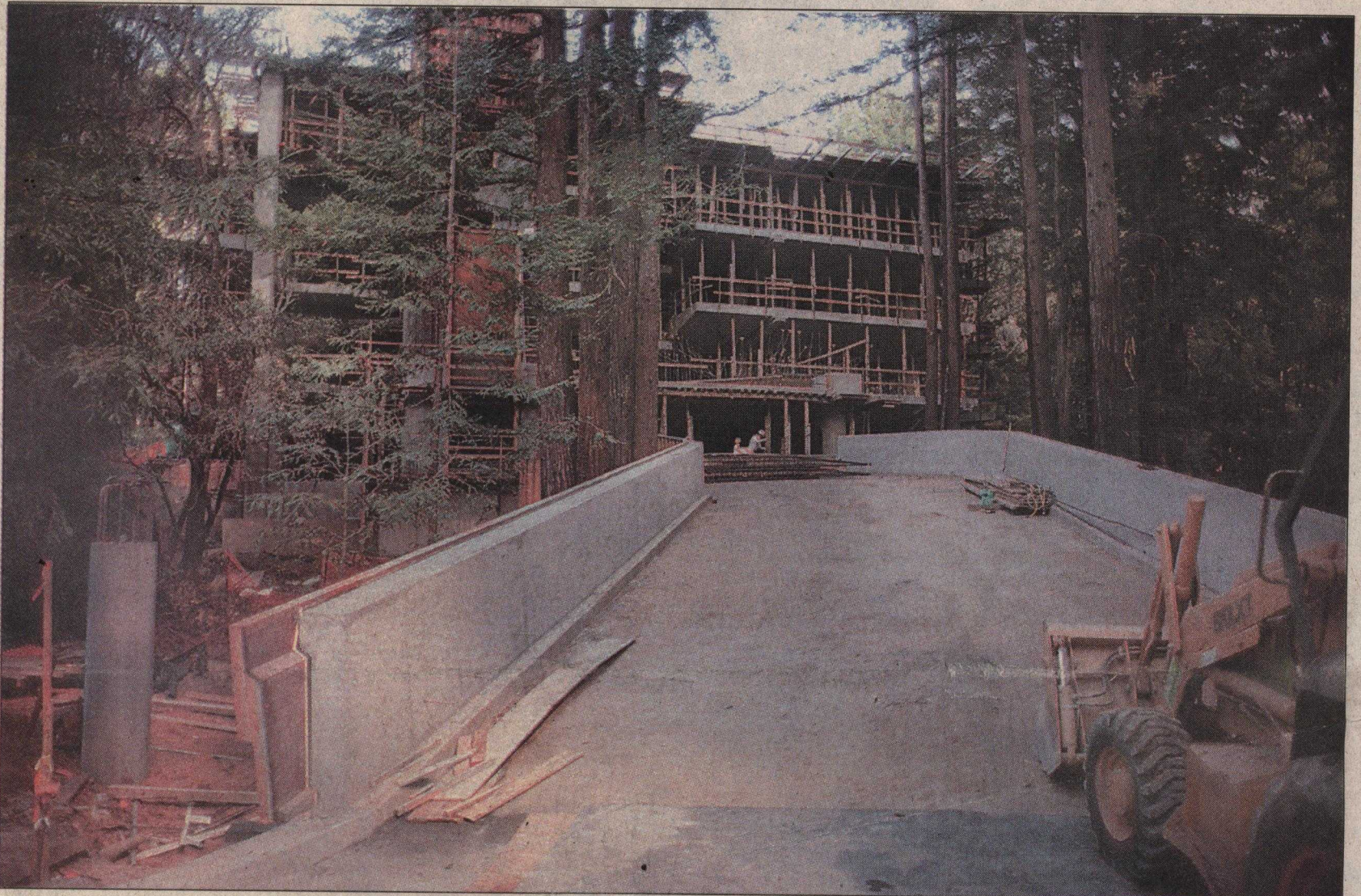


UC SANTA CRUZ: A CAMPUS UNDER CONSTRUCTION



Bill Lovejoy/Sentinel photos

The controversial parking garage, under construction among the redwoods, is one of several ongoing campus projects.

Students arrive for classes amid crush of new projects

By **ROBIN MUSITELLI**
SENTINEL STAFF WRITER

SANTA CRUZ

UC Santa Cruz's banana slug mascot should wear an orange vest and hard hat this year.

With a half-dozen major projects under way, the campus is a series of construction zones linked by traffic detours, closed parking lots and construction tape.

The challenge for students who start school this week won't just be in the classroom. It will be in getting there. And it's not going to change any time soon.

"It isn't everywhere, but there will

be projects of varying sizes over the next several years," said Liz Irwin, campus spokeswoman. "That's how we're going to be able to accommodate the students who will be coming."

The growth at UCSC mirrors growth at campuses statewide. In the UC system alone, an estimated 63,000 additional students are expected by 2010. At UCSC, which had an enrollment of 11,300 last fall, the campus' long-range development plan is to prepare for 15,000 students by 2005.

One scenario under discussion would have UCSC grow by an additional 1,900 students, to 16,900, by 2010.

To help students and faculty navigate their way through the backhoes, the

Please see **UCSC** on **Page A8**



Pedestrians will get views of chain-link fencing instead of UCSC's more pastoral surroundings as construction continues on several projects around campus this year.

9.17.00

✓

Use UCSC Growth

was Geor...
with the verse that star...
"Lotion" that he...
was Geor...

UCSC: Students arrive for classes to find a campus under construction

Continued from Page A1

university has a Web site with a weekly construction update. Shuttles and rapidly revised maps and creatively placed parking lots are part of the core curriculum.

Here's some of what's going on:

Among the first and most visible signs of campus construction are the modular units parked along Hagar and Coolidge drives. Once used for temporary student housing, they were moved in August to make way for construction of the dining hall for Colleges Nine and 10, and residential halls.

Work on the Bay Tree Bookstore expansion and Graduate Commons — initially scheduled to be done by now — continues. The new 30,000-square-foot bookstore is in the middle of campus; the 6,600-square-foot commons will have office and recreational space for graduate students and room for the Whole Earth Restaurant.

A pedestrian plaza is also part of the \$13.5 million project. Hagar Drive near the project is one-way northbound, with occasional traffic delays. Completion is expected in December, Irwin said.

Already a buzz of construction, several new projects are set to begin at Science Hill.

A \$12.4 million parking structure for 500 cars has been under construction since October at the corner of Heller and McLaughlin drives. Road work has been going on in the vicinity, but should be completed by the start of school.

This fall, work is set to start on two new buildings on Science Hill — the \$3 million Center for Adaptive Optics and a \$56 million physical sciences building.

The 78,500-square-foot physical sciences building will house the new School of Engineering, and have class-

rooms for chemistry and environmental toxicology.

Just completed apartments for 280 students at College Nine and College 10 are scheduled to open this weekend. The last of the furniture for the \$20.8 million apartments was delivered Thursday, the first day students began arriving for fall classes, Irwin said.

Construction started last month on three residence halls for College Nine, and for three residence halls for College 10. A dining hall complex to be shared by both colleges is also part of the \$61 million project.

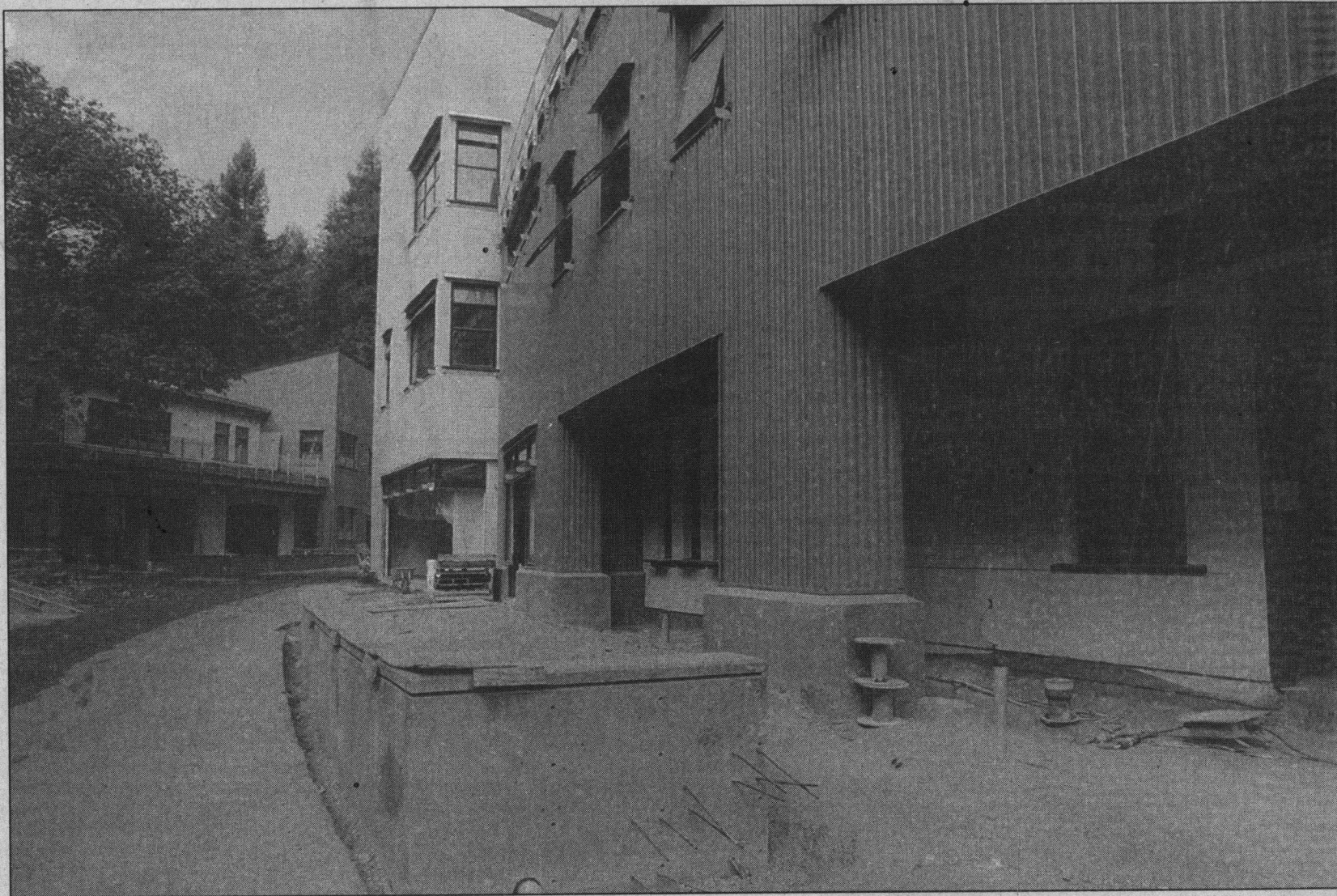
The nine-acre upper East Field will be closed and fenced for the fall and winter quarters while it is regraded and planted with new turf. Students with dust sensitivities are being advised to take alternative routes until mid-October, when the new grass comes up. The running track around the field will remain open.

The \$16 million Interdisciplinary Sciences Building addition will have offices, teaching labs and conference space for physics and astronomy and environmental studies. The construction will result in traffic delays on McLaughlin Drive. Pedestrian paths have been rerouted around the site and the pedestrian bridge to the Cowell Health Center is closed.

In the next several years, new apartments for about 525 students will be built at Cowell, Stevenson and Porter colleges, and more housing will be built for Colleges Nine and 10.

Faculty housing is also being discussed, but a site hasn't been selected, Irwin said.

Contact Robin Musitelli at rmusitelli@santa-cruz.com.



Bill Lovejoy/Sentinel

The new Bay Tree Bookstore and the Graduate Commons are among the construction projects under way on the UC Santa Cruz campus.