

## Landmark: What Now?

# The Bridge That Traveled

By MARGARET KOCH  
Sentinel Staff Writer

The Glen Canyon covered bridge has led an adventurous life — that's a term one doesn't ordinarily associate with bridges.

But then, the Glen Canyon bridge is not an ordinary bridge. And its adventures are not yet over.

It is one of the three historic covered bridges remaining in Santa Cruz County. The others are at Paradise Park (considered by experts to be a unique design) and at Felton (the tallest covered bridge in the U.S.).

The Glen Canyon bridge, built in 1891-92, is today in need of some help. It is in a "deteriorating condition" according to SCOPE president Tony Oliveira and Roy Rydell who is president of Santa Cruz County Society for Historical Preservation. SCOPE is asking the Santa Cruz Redevelopment Commission to consider refurbishing the bridge which is located in DeLaveaga Park, just off Branciforte Drive.

The 83-foot-long bridge wasn't always where it is now. For 48 years it spanned Branciforte Creek as part of Glen Canyon Road, near its junction with Branciforte Drive.

Horses clip-clopped over its heavy plank flooring; buggy wheels rolled smoothly and loaded farm wagons creaked and rumbled as they made their way across. Barefoot kids with crooked willow "fishing poles" clambered down the bank beside the bridge to the creek where trout finned in the pools.

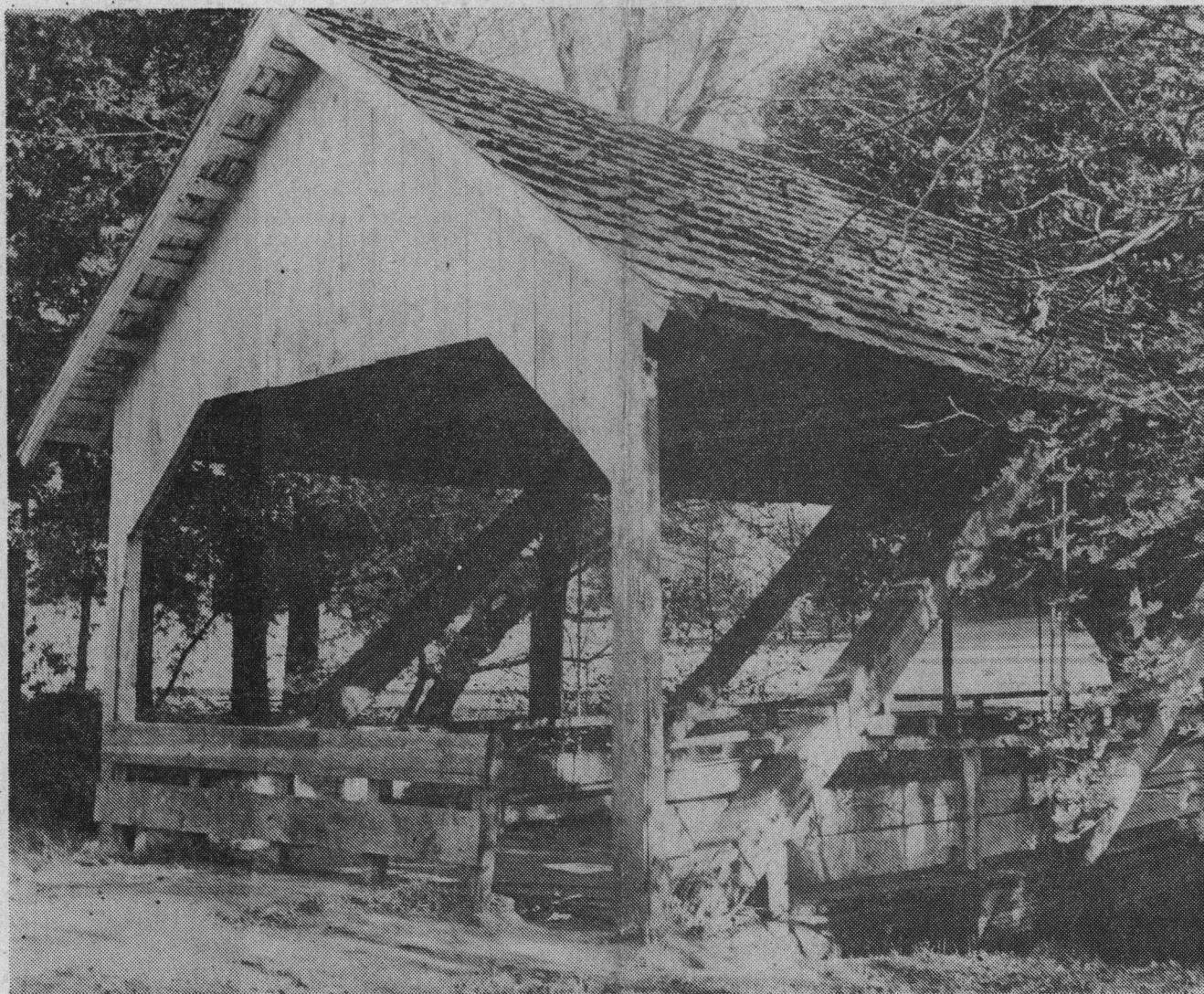
One day in the 1930s, Santa Cruz County awoke, shook itself and decided to modernize the creek crossing. The old bridge had to go. It was narrow, constantly in need of repairs and precarious under heavy loads.

County supervisors allotted the sum of \$250 for demolition of the outdated span.

However, one supervisor was greatly concerned. She was Rose Rostron, the first woman to hold that position in Santa Cruz County. Rose realized that the bridge was a piece of Santa Cruz county's fast-disappearing heritage.

Another concerned person was a Santa Cruz High School science teacher — Robert Burton, who later became a county supervisor himself.

He proposed a plan for moving and saving the bridge.



Glen Canyon Covered Bridge is picturesquely located over Branciforte Creek in DeLaveaga Park, one of three covered bridges in Santa Cruz County.

"If the money can be spent for moving it instead of demolishing it, I will take the responsibility for moving it," Burton offered.

With the go-ahead, Burton called on Charles Stewart, another high school instructor, and Frank Burns who was warden of DeLaveaga Park. Together the men labored to remove the bridge from its original site and get it onto rollers.

They started rolling it down Glen Canyon road and went a short distance when they had a problem.

"We were fine until we reached that sharp turn in the road," Burton says. "Then we got stuck. The bridge wouldn't move."

In spite of all their mighty efforts to move it, the

bridge sat there for several days, blocking traffic on Branciforte drive.

It almost sounds as if the old bridge was protesting the move.

Residents and tourists were forced to detour by way of Mill Road while the bridge blocked the other road. Finally a tractor was brought into play and the stubborn span was coaxed along again, protesting and creaking all the way to its new site in DeLaveaga Park where it again bridges Branciforte Creek.

It was placed on concrete foundations and its side boards were removed to allow bridge strollers a delightful view of the creek below. It was closed to all but foot traffic.

No other county in California can boast three covered bridges, although Oregon and Washington have quite a few. The bridges were covered originally to protect their timbers and planks from the weather and not for all the other odd and picturesque reasons one often hears.

Artists and photographers have a field day at the Glen Canyon bridge. It is an extremely "photogenic" historical subject, worthy of the label "landmark."

## Wedgwood Society to Meet

The Wedgwood Society of America and Albert Museum in Northern California will meet in London, England, will discuss December 14 at 2 p.m. at Marla "Salt Lake Pottery" from Elora

## Christmas Program At

## Monterey Trip Slated