

# Will it ever stop?



Dan Coyro/Sentinel

Park Ranger Mary Couser sashes across Newell Creek Friday afternoon as Loch Lomond overflows into the spillway behind her.

# Call it mud or flood, but don't call it rain

By **ROBIN MUSITELLI**  
Sentinel staff writer

**SANTA CRUZ** — That wasn't rain. According to National Weather Service forecasts, what we had Friday was clearing skies.

Partly cloudy. Maybe some sunshine.

Maybe they were wrong. Maybe it was wishful thinking.

Bonny Doon had five inches of wet "sunshine" by noon Friday.

Water broke over the spillway at Loch Lomond Reservoir in Felton shortly before 9 a.m. It was the first time the reservoir had filled in January since 1984, said Loch Lomond Recreation Area Park Ranger Mary Crouser. Last year, water never did make it over.

The sponge was saturated: springs flooded into existence in mountainous areas.

Ephemeral creeks gushed.

Throughout the county, public works crews responded to oozing hill-sides that slumped and sloughed into roadways.

Graham Hill Road, just north of the city limits, was one, closed Friday morning by a slide. Cathedral Drive in Aptos was another. Mud two feet deep gooped up the road.

Highway 17 remained open throughout the day, but Caltrans warned the expected heavy rains could be accompanied by mudslides that would cause the serpentine highway to be intermittently closed.

## ■ County's mountain dwellers told to prepare for dangers — A4

That turned out to be the case Friday night, as northbound lanes were closed at Sims Road at 10:30 p.m. One of the southbound lanes north of the Glenwood Cut-Off was closed at about 9 p.m. as Caltrans crews cleared a slide.

Granite Creek Road at Branciforte Drive and Scenic Way in Ben Lomond were closed when trees came across them.

Felton Empire Road, several miles from Highway 9, was closed due to erosion. Mudslides on Old Ranch Road off Glen Canyon Road in Scotts Valley and Redwood Cathedral Road in Aptos also closed those roads for part of the day.

"It's going to be messy," said Nancy Gordon, of the county Office of Emergency Services.

Mudslide and flash flood watches were issued but canceled by 5 p.m. by the National Weather Service and U.S. Geological Survey for nine counties, including Santa Cruz. Residents were warned that the creeks could rise quickly, especially in the already soaked mountain areas, and advised to minimize travel through the weekend. In Brookdale, a mudslide loaded with trees broke loose on Alta Via late Friday morning. The slide traveled about 150 feet downhill, threatening a home on Highway 9, said Rachelle Lather,

county civil engineer. The trees stopped sooner, but brought down power lines, she said.

The home, which was vacant, was posted by county officials as unsafe for occupancy. Although the slide appeared to have stopped, "there could be more movement," she said.

Westlake Pond, on Santa Cruz's Westside, overflowed and the runoff bubbled out on Escalona Drive. Santa Cruz Public Works Department passed out sandbags to several residents to divert water that might flood garages, said Dick McKinney, operations manager.

Flooding at the intersection of Ocean and Barson streets contributed to flooding at Jessie Street and East Cliff Drive, he said. "We're going to have some localized flooding here and there, but shouldn't have anything that is going to be a threat or cause major property damage," McKinney said.

The rain is expected to continue today, but not as heavy as Friday's, the National Weather Service said. A new Pacific storm is expected to head to Northern California by Sunday.

Breaks in the rain Friday allowed the San Lorenzo River to remain far below flood stage, according to McKinney. "It's so far below flood stage it's not worth talking about," he said.

## Rainfall figures

Reported in inches  
ending at 6 p.m.  
Friday.



	Yesterday	Season to date	Last year to date
<b>Aptos</b>	2.11	26.40	9.78
<b>Ben Lomond</b>	2.70	46.59	15.38
<b>Bonny Doon</b>	4.87	48.74	18.22
<b>Boulder Ck.</b>	2.50	50.78	15.87
<b>Capitola</b>	2.80	28.83	10.70
<b>Corralitos</b>	1.70	18.40	na
<b>Felton</b>	3.00	43.26	14.48
<b>Graham Hill</b>	3.70	38.30	na
<b>Happy Valley</b>	2.80	33.01	na
<b>La Selva B.</b>	1.70	23.26	9.35
<b>Live Oak</b>	2.40	25.43	7.43
<b>Nat. Bridges</b>	2.99	20.71	6.98
<b>Rio del Mar</b>	1.85	26.06	8.27
<b>Santa Cruz</b>	2.94	25.75	9.93
<b>Scotts Valley</b>	3.25	41.95	14.29
<b>Soquel</b>	2.73	29.04	10.84
<b>Swanton</b>	2.30	29.30	10.30
<b>Watsonville</b>	na	na	na
<b>Zayante</b>	2.24	41.02	12.80

Sentinel graphic

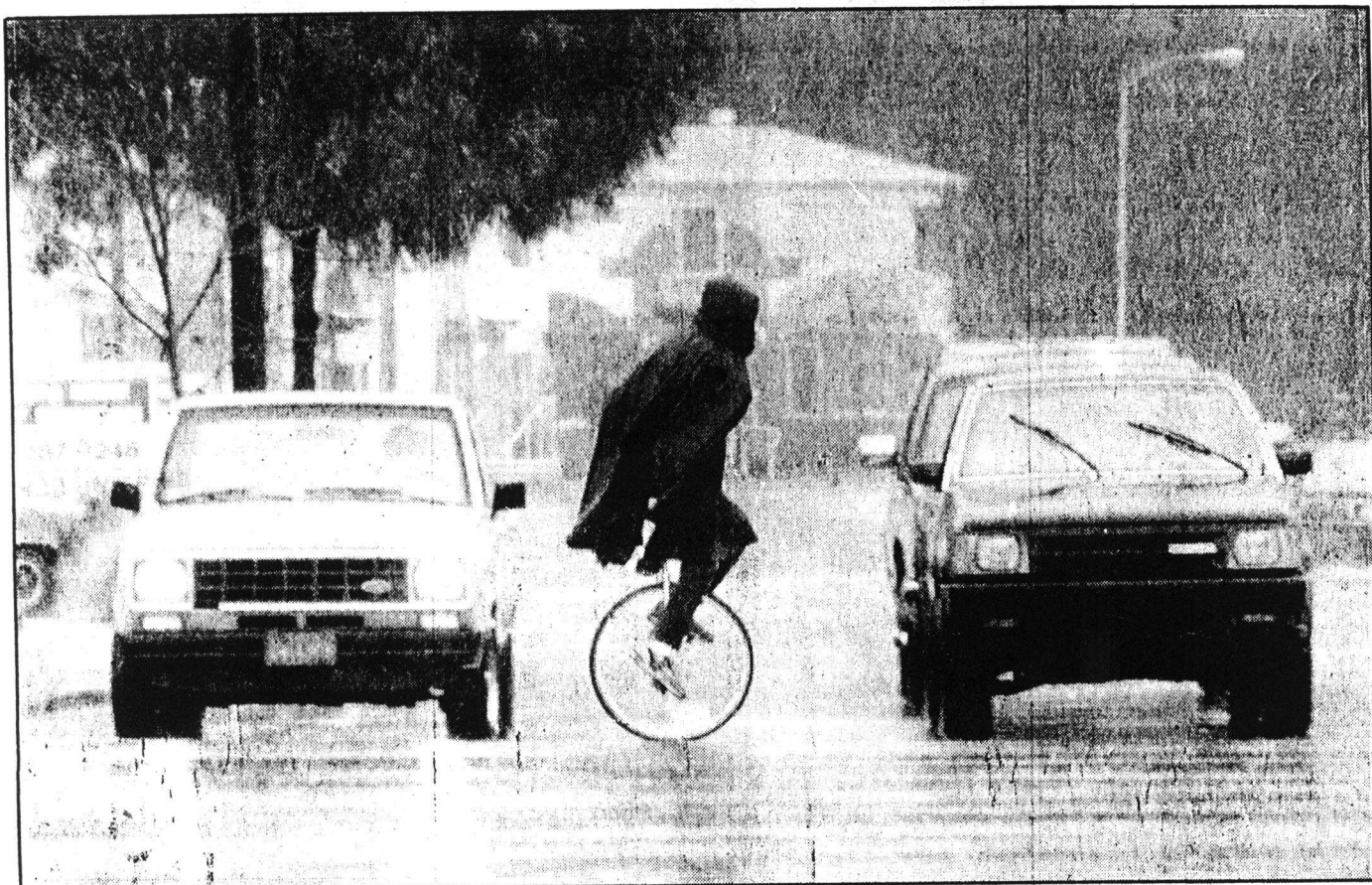
In the lowlands of Soquel Village, which has had much practice in dealing with floods, piles of sandbags could be seen stacked in front of businesses as merchants kept a steady watch on the weather.

The storm also caused problems in the Pajaro Valley.

Residents from four houses in Eureka Canyon left their homes Friday afternoon as the storm filled Corralitos Creek to near crest level.

The residents left for drier ground, according to Mark Bisby of the Cali-

Please see **WEATHER** — A2



Dan Coyro/Sentinel photos

A unicyclist defies the rain and traffic Friday morning on his way along Laurel Street in Santa Cruz.

## Weather

*Continued from Page A1*

California Department of Forestry and Fire Protection in Corralitos.

"We advised them as to the amount of water and how fast it's rising," Bisby said. "They were all real cooperative."

The evacuations occurred in the same area where storms in 1982 caused major problems, Bisby said.

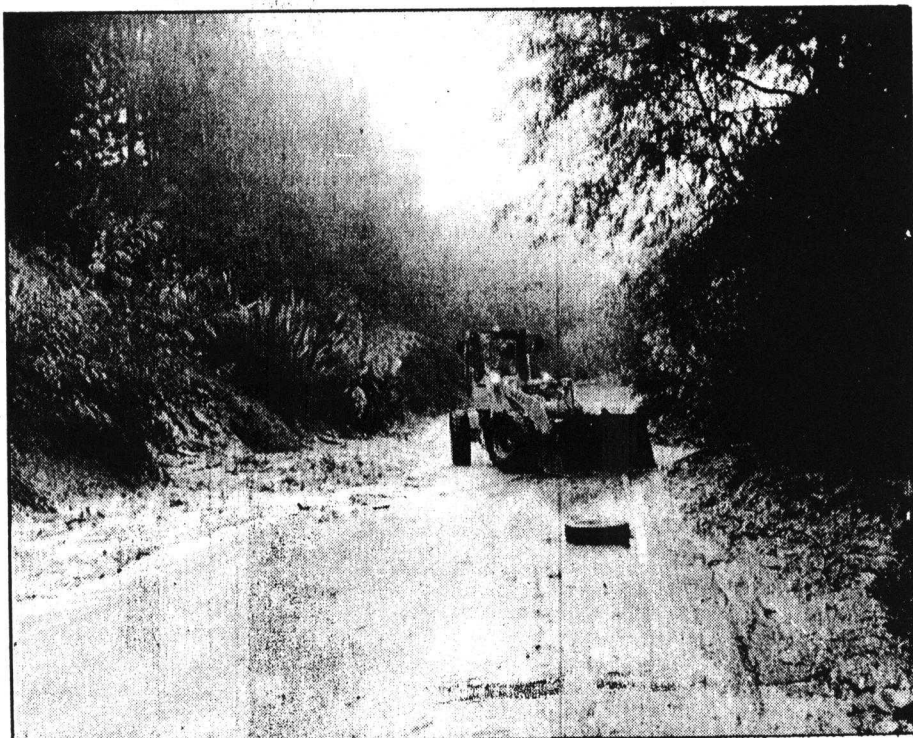
Corralitos Creek is expected to crest soon. CDF crews were making periodic checks. At 9:30 p.m., they reported it was still several feet away from overflowing the banks closest to the homes.

The local chapter of the American Red Cross put Bradley Elementary School officials on alert Friday.

The school might be needed as a temporary shelter site if more people are forced from their homes in Eureka Canyon.

In Watsonville, city workers were keeping a close watch on the levee and other potential flood areas. No flooding or damage was reported, said Lorraine Washington, city clerk.

CDF also reported no damage or flood problems in Pajaro Dunes.



Workers clear a mudslide from Graham Hill Road, between Sims Road and the Santa Cruz city limits, early Friday.

Numerous small power outages — affecting six to 50 customers at a time — were reported throughout the county, a Pacific Gas & Electric spokesman

said. A total of about 300 customers were affected, he said.

*Roberto Robledo and David Pacini contributed to this report.*