

Santa Cruz Beautiful : . . . Country Life Enjoyable At Nasser Home.

Two Acres Of Landscaped Grounds Surround House

Located At Former Site Of Highlands

(Editor's note: This is No. 41 in the Sentinel-News' regular Wednesday visits to "The Homes of Santa Cruz.")

By Jewel E. Woods

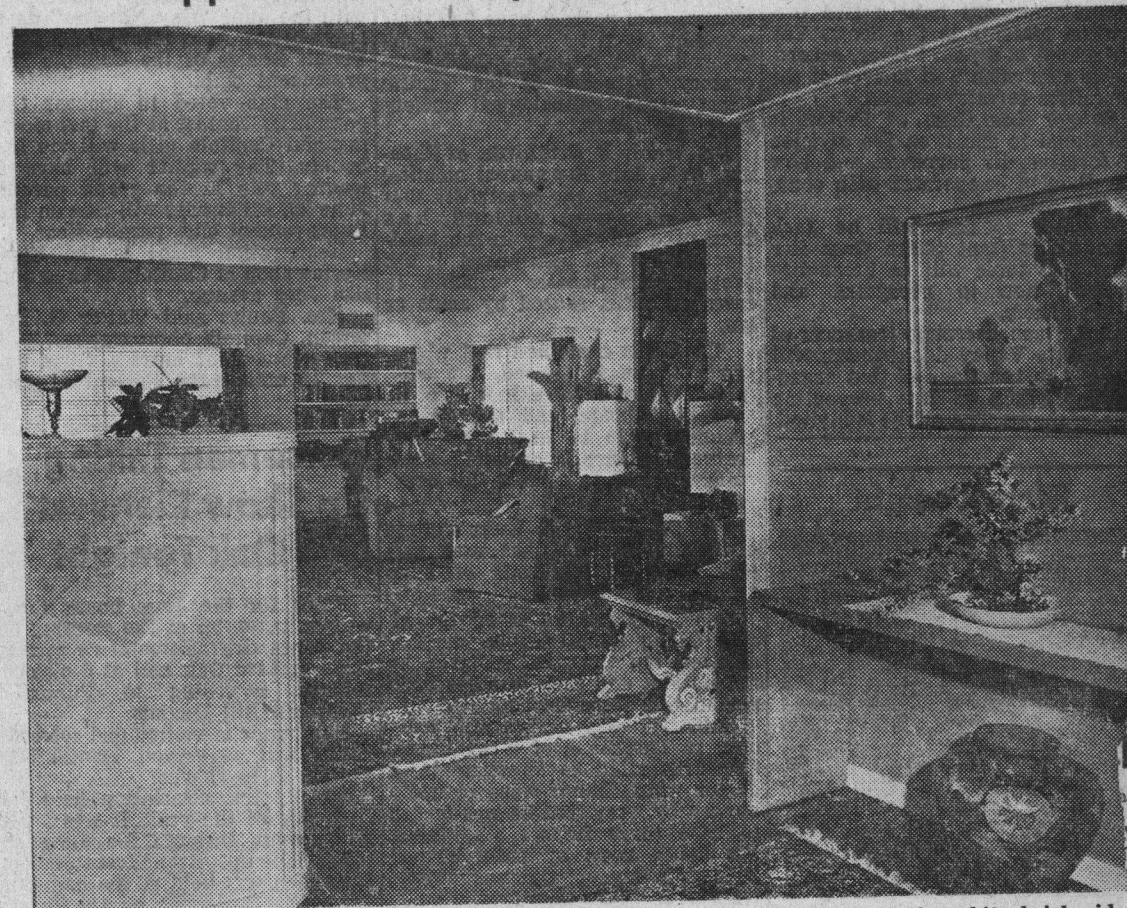
Interesting not only for its beauty, but also for its semi-historic site, is the Santa Cruz mountain residence which is subject of this week's visit.

Owned by George and Henry Nasser, San Francisco theater men, the two-story, 14-room California ranch style structure is located on 40 acres of land which for nearly a half-century was known as "The Highlands," the name bestowed on the property by its first owner, H. Francis Anderson, an English horseman.

There were some who thought that Anderson held an English title, but if he did, he never used it. He was widely known, however, as a lover of fine horseflesh, and after establishing "The Highlands" in 1890—it then consisted of more than 40 acres and a spacious, high frame house—he and his wife, a former Irish actress, devoted much of their time to breeding and training animals.

Then, in 1903, his wife died. Residents of the area rumored she had broken her neck while riding a spirited horse, or that she had committed suicide by jumping into the estate's empty swimming pool. Actually, she died on a train January 30, of that year. Seven months later, Anderson married Ida May

Copper-Paneled Fireplace Enhances Living Room



Spacious living room has 15x30-foot Oriental rug covering the floor, and among its furnishings are numerous sofas, upholstered

in corded frieze or brocades, in blue-gray or rust. Copper squares form the panel above the fire-

★ ★ ★

place, and the white brick sides are built up at the base to form two low seats, one on each side of the hearth.

Sargent, of Santa Cruz. In 1927, after a divorce and a third marriage, Anderson died at San Francisco, and in the years which followed, "The Highlands" changed hands a number of times.

The large residence, its architecture reminiscent of the Victorian era, was being razed when the Nasser brothers purchased the estate in 1939. (The property is located two miles out of Felton, on State Highway 9.

Without disturbing the formalized landscaping which had been planted by Anderson's gardeners, and which included the rows of English hawthornes lining the driveway into the grounds, the Nassers constructed their modern residence at nearly the same site occupied by the first home, employing Fred Amandes of San Francisco as the architect.

The estate is one of the few in the area which has a river running through it—one section is bisected by the San Lorenzo. In addition to the main house, the more than two acres of the land which is landscaped now contains a two-bedroom guest house, completed about two years ago; a long, completely-equipped bath-

room Persian Oriental rug), or, through another door, into a room-size reception hall which, like the hallways which take off from it, has walls covered with an imported, natural-tan colored rice cloth, with a unique woven texture.

Large portion of the furniture on the main floor was custom-made for the house.

Views of the living room, with its pale blue-green walls of horizontally-laid wood and its white-finished brick fireplace centered with a panel of square copper plates, and of a portion of the entrance hall, the dining room, and the adjoining breakfast room, are shown on this page.

Also on the first floor is a wood-lined recreation room, which has its own bar of imported, polished wood, and which is connected, through a double doorway, with a sunroom, furnished with authentically-styled bamboo. The Nassers are fond of music, and in addition to the Steinway grand in the living room, they have a high old-fashioned organ in the play room. Both this room and the adjoining sunroom have a floor of red tile. (Floors in the remainder of the rooms are of random-width hardwood, and are

matching tile around the sink an electric dishwasher, includes a double electric range, with a solid stainless-steel top, which provides both work space and room for the six heat elements.

The service kitchen, which has doors leading both to the breakfast room and to the dining room, has the same colored tile, a sink section, more cupboards, and high, double refrigerator.

The breakfast room has windows on three sides, giving views of the front grounds and the swimming pool; the side lawn and the enjoyable brick barbecue section; at the back grounds, with the green meadow at a lower level. Bamboo and blond wood are combined in the modern furniture here, which contrasts with the soft-blue and pale blue walls of horizontally-laid wood, and the dusty-pink ceiling.

Each of the bedrooms on the second floor, reached by a stairway and halls covered with gray-toned sculptured wool carpeting, has its own color scheme and matching tiled bath, and has semi-modern suites.

The Nassers spend as much time as possible at this mountain place, coming down at least every week-end, and nearly all of their hours there are spent in working

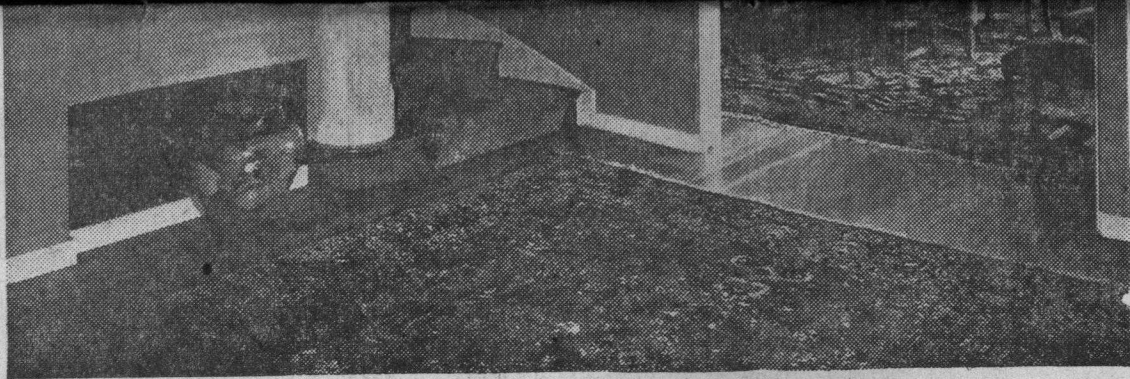
Graceful Curving Stairway In Entrance Hall



This view of the front of the residence shows the aqua-tiled swimming pool, near the completely-equipped bathhouse. At the right of the home, and not seen in this picture, is a large

barbecue, at the end of a red tiled section near a rustic ravine. Deer from nearby hills frequently are seen in the new fruit orchard being started beyond the guest house.

SPRING
Suggestions
 for your • HOUSE



Light wood on the curved stair railing blends with custom-made blond wood tables (which appear to be made of a single strip of curved wood), and with the walls, which are covered with natural-colored, woven, rice cloth. Light brown wood has been used for the carved furnishings of the dining room, seen at the right, and blond modern in the window-enclosed breakfast room beyond.

Vote To Boost County Salaries

Sacramento, April 6 (U.P.)— The state assembly today passed a bill to hike the salaries of the supervisors, auditor and district attorney of San Luis Obispo county for the first time in 12 years.

Assemblyman James W. Silliman, R., Salinas, said the county's grand jury had recommended the increases: Supervisors, \$1800 to \$2400; district attorney, \$6000 to \$7200, and auditor, \$3000 to \$4800.

house, near the 40x20-foot tile-lined swimming pool; a home for the caretaker and his wife, garages, toolsheds, and a tennis court.

An expanse of meadow, several hundreds of yards long and at a lower level than the house, which overlooks it, has been completely piped with a sprinkler system, against the day when the Nassers may convert it into a private golf course, or to some other use.

Interior of the main residence has restrained modern lines, in keeping with a country place; five bedrooms, a newly-added nursery, and five and a half baths.

From the front covered terrace of red and cream tiles, one may walk directly into the living room (which is centered with a 30x15-

covered with deep Oriental rugs.) The first floor contains one bedroom, furnished with a curved front, blond modern suite. The connecting bath, which has aqua tile wainscoting and a light yellow tile floor, has a shower entered through a glass door on which has been etched a seagull design. (All the baths in the house, which have showers have glass doors bearing individually designed frosted patterns.)

Part of the back section of the house is taken up with the kitchen, the serving kitchen, and an extra-size laundry room, the latter having a dark green tile floor, stationary automatic washing machine, and long deep-freeze unit.

Part of the equipment in the main kitchen, which has one whole wall of yellow and tan tile and

about the grounds, arranging new plantings, installing a new fruit orchard, or in similar work.

Their sister admitted they enjoy this outdoor activity so much, she finds it difficult to get them to come in long enough to eat.

More than 21½ billion dollars' worth of new life insurance was purchased by United States residents in 1947.

ELECTROLUX

The Modern Vacuum Cleaner
Price \$69.75. Immediate Delivery
and terms if desired. 15 years local
representative.

PHONE 3020

H. L. Bergstrom

114 Acadia St.

Santa Cruz

