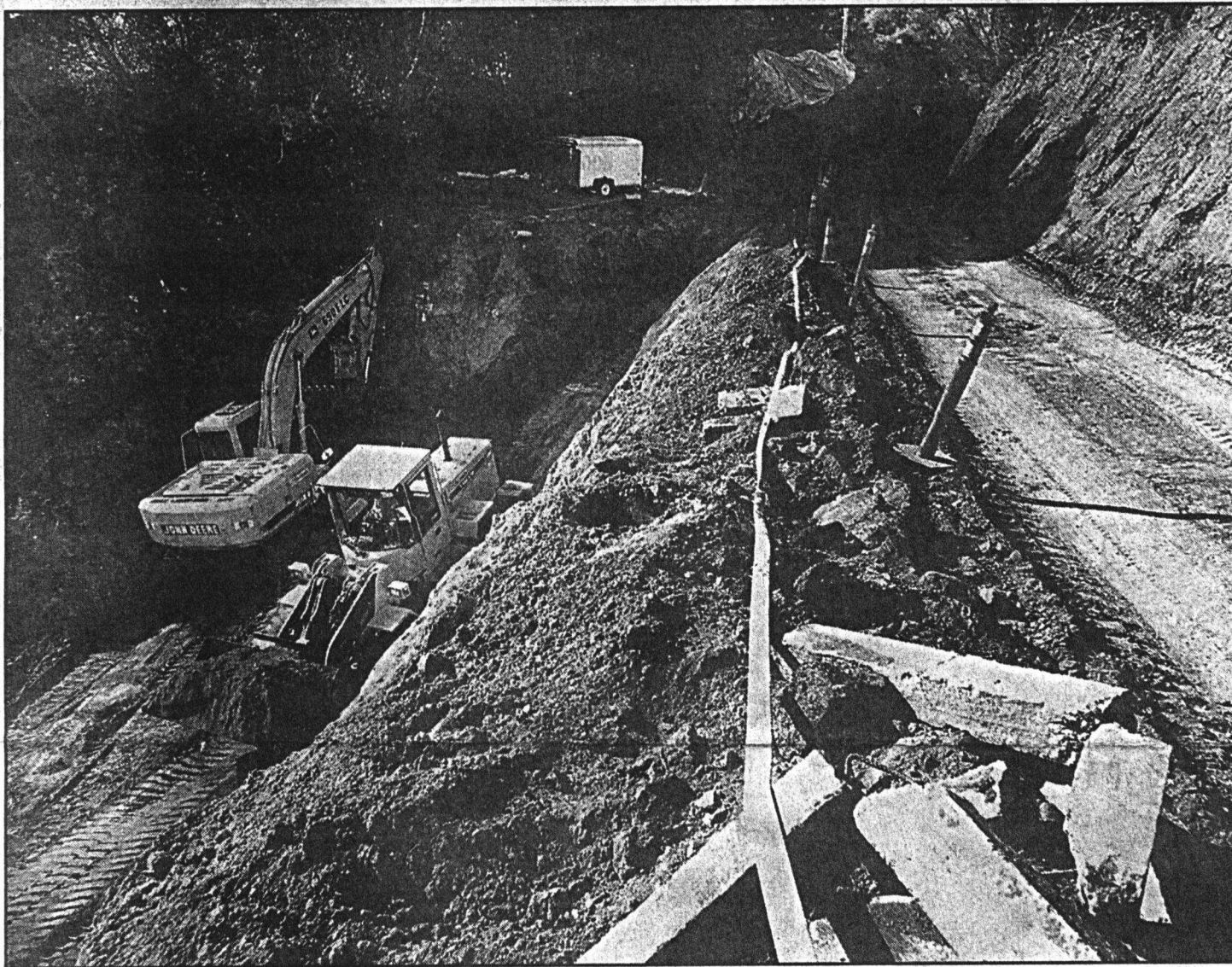


The big dig

11-7-98



Bill Lovejoy/Sentinel

APTOS — Construction workers are excavating a section of Valencia Road near Trout Gulch Road that slid after storms this past winter caused a concrete retaining wall to collapse. A retaining wall made of dirt and fabric will be installed, said

Bill Williamson, senior design engineer with Santa Cruz County Public Works. The \$400,000 project, funded by the Federal Highway Administration, should be completed in about a month, Williamson said.

REFERENCE