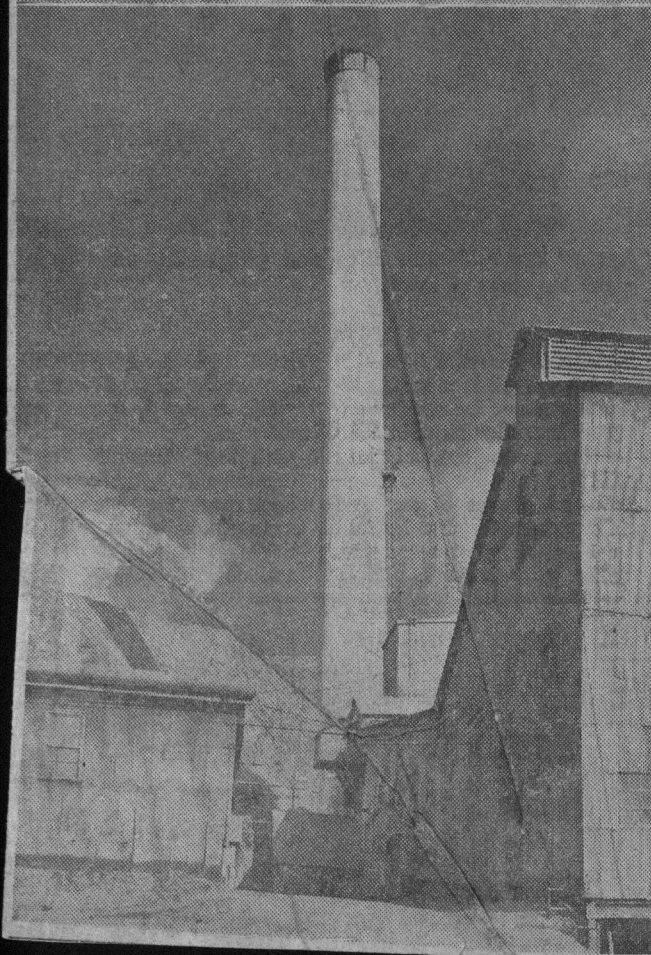
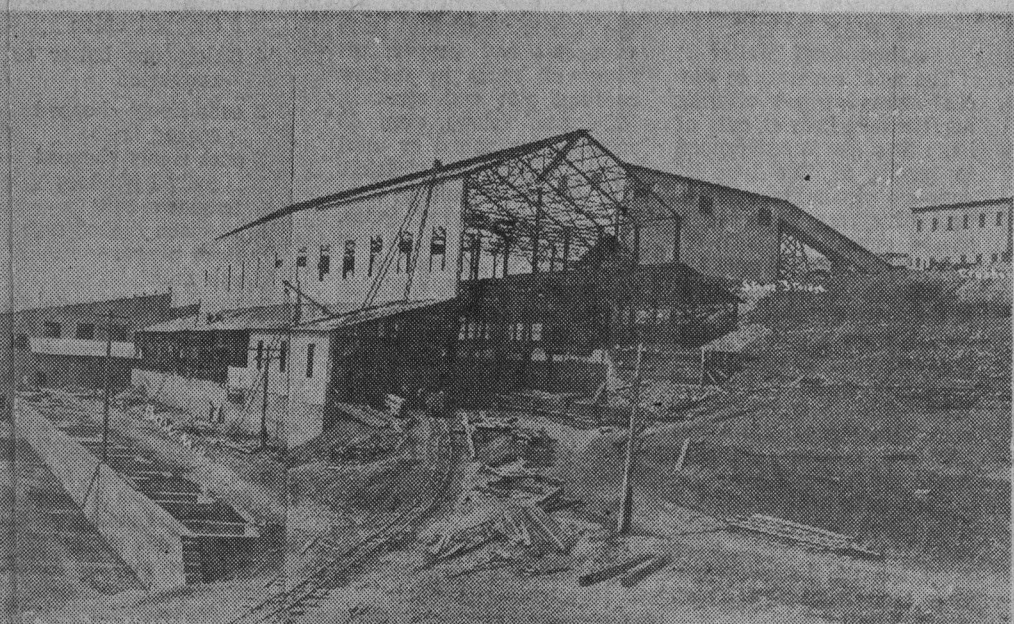
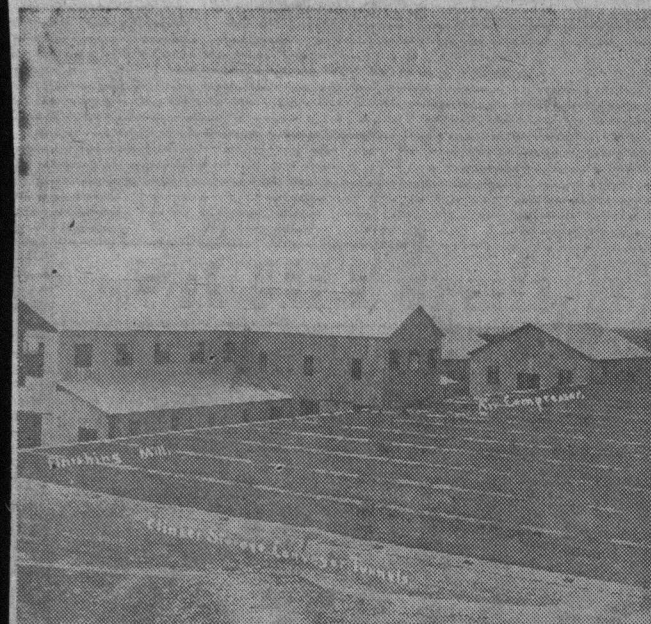


Davenport Cement Plant Looks Back On Long History



The sprawling Santa Cruz Portland Cement Company plant at Davenport was not yet complete when the photograph above was taken August 29, 1906. Original construction cost was \$3 million and the plant has had an historic capacity of three million barrels per year. Purchased in 1956 by Pacific Cement and Aggregates, it has been suggested that the old plant, which played a large role in the construction of northern California, be designated as a California historical monument.

In 1946 the famous big stack at Davenport, at right, replaced six obsolete kiln stacks and became a landmark for pilots, seamen, fishermen and ocean going vessels. The big chimney is 235 feet high, 22½ feet in diameter at its base and 17½ feet at the top. While the stack will no longer function after Pacific Cement and Aggregates' mammoth expansion project, (see story on Page 1), the company will allow it to stand as an aid to navigation.

The old company hospital, across Highway 1 from the Pacific Cement and Aggregates plant at Davenport, will be relandscaped and repurposed as a museum (drawing at left) to house relics and artifacts of the pioneer cement plant.

