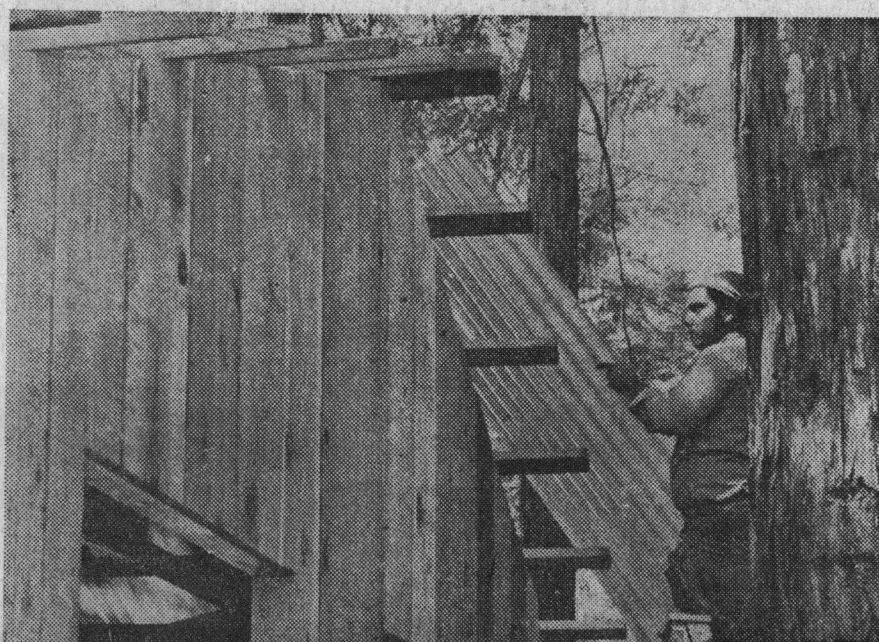


## *The Kids are coming*

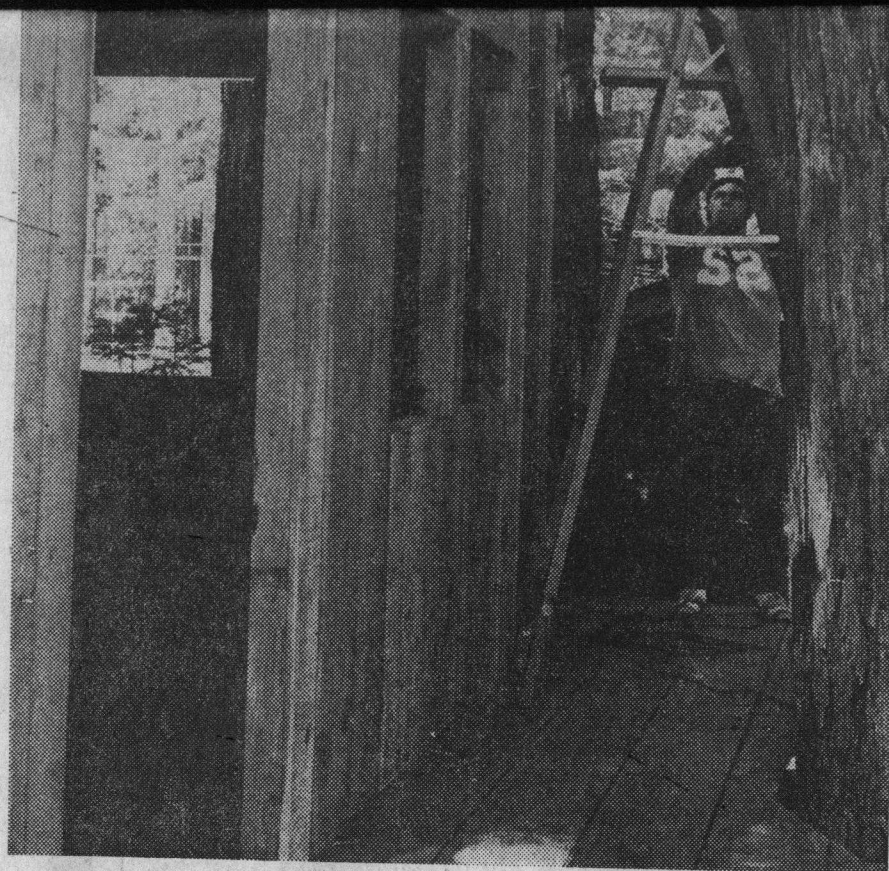
... on crutches, in wheel chairs and on their own two feet.

And when they arrive at Camp Harmon, Easter Seal camp for crippled children near Boulder Creek, a new nature house, at left, will be ready for them; they can care for animals in the new corral, above; go on a campout across the new bridge over the San Lorenzo River, below; fish, boat and swim; participate in crafts, join their counselors around a campfire at night, and go to bed in cozy cabins, lulled to sleep by the music of the redwoods.

All this is important to crippled children says Camp Director Dick Scheidt. "They need to be







participants not watchers, leaders not followers, actors not the audience, helpers not always the helped."

Scheidt (painting Camp Harmon sign) says camp improvements this year have been made possible by donated funds and materials and a federally-funded work study program using San Jose City College students.

Fifteen students, some shown in accompanying photos, work each weekend at Camp Harmon — building, refurbishing and maintaining the camp which opens for business June 20. In all, there are four two-week sessions for crippled children and a one-week camp for hemophiliacs. Nearly 280 campers will enjoy their stay in the redwoods this summer with 30 of them from Santa Cruz county, thanks to camperships provided by local organizations. Many more camperships are needed, reports Kay Parodi, executive director of the Easter Seal Society of Santa Cruz County. Camp Harmon needs lumber, portable water containers, a pickup truck for camp use, road surfacing materials, new and used furniture, window glass, a duplicating and copy machine, tools, and heating systems for the cabins. All gifts are tax deductible. For information call 423-7520.

— Mildred Ann Smith

**Tree'n'Sea  
Living**

**Photos by  
Bill Lovejoy**

