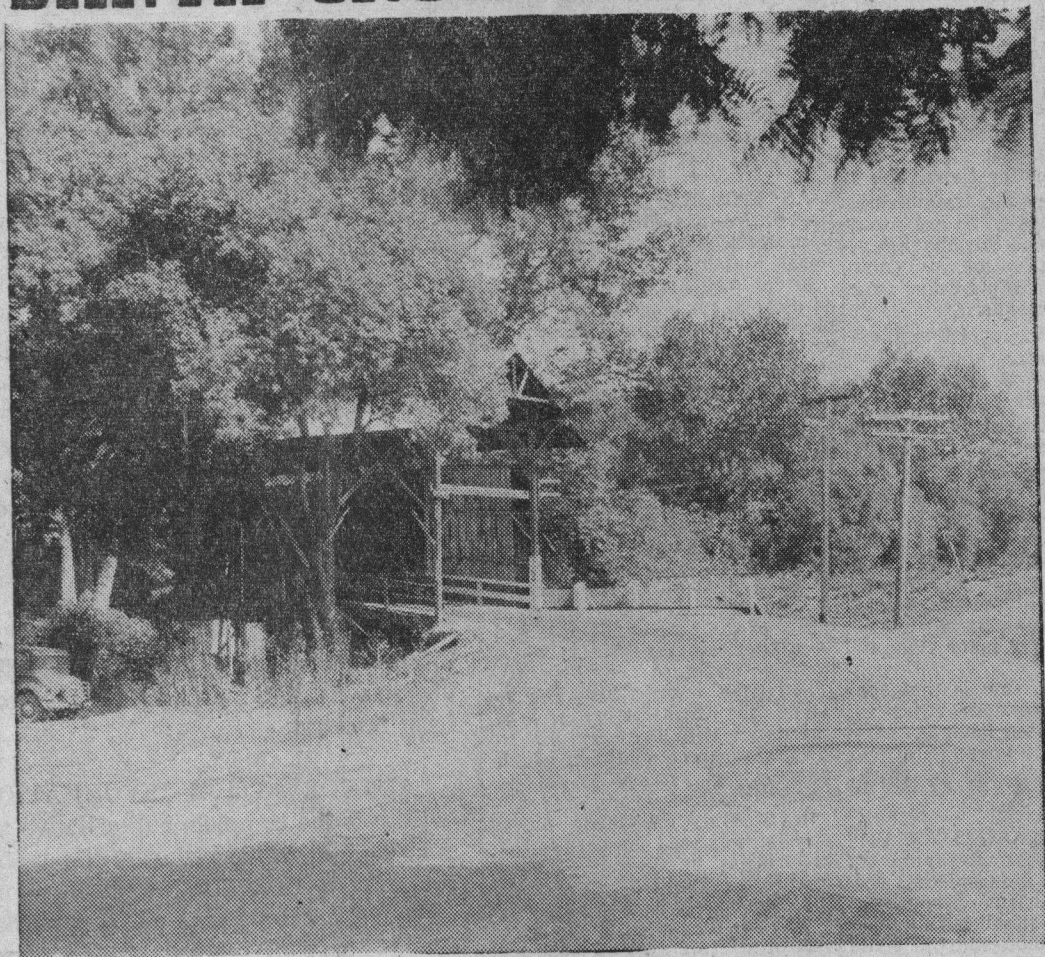


9/2/56

# SANTA CRUZ YESTERDAYS



A PICTURESQUE BIT OF FELTON

(From the Preston Sawyer Collection)

The above picture of Felton's 65-year-old covered bridge was made around 30 years ago, when it was part of the main entry route to the valley community from all points east of the San Lorenzo river. Today it stands retired of its duties, a treasured and nostalgic relic of another era, while modern traffic whisks by a short distance to the north.

Here is a word picture of Felton written in the days when the bridge was new:

Where the San Lorenzo makes an abrupt angle, turning to flow down past the Big Trees and through Powder Mill canyon to the sea, lies Felton, and amid orchards, upward-sloping pastures and grain fields, shadowy groves and tree-fringed openings. Besides the important lumber interests, Felton has one more dis-

tinctively her own, that of lime.

## Quarries and Kilns

The extensive quarries and kilns of the H. T. Holmes and the IXL companies are visible from every point of view on the near hillsides. The quality of the product is excellent and the shipments large . . . It has a hotel, church, flourishing school, livery stables, public hall and the usual modern advantages of telephone, telegraph, etc.

Its railway station is about a mile away from the village proper.

William Russell, I. N. Hayes, W. B. Drew, the Stein Mercantile company and Joseph Ball have been active promoters of Felton's welfare.

Like its neighbors, Felton is a camping center and headquarters for anglers and other sportsmen. In fact, it counts so safely on a large contingent of summer-comers that a regular business

is made of providing for their needs.

## Vacationland

The San Lorenzo is dammed and harnessed to afford a swimming pool, dancing platforms are built, large spaces are graded and especially arranged for the building of the little canvas cities that grow up in a day and have a butterfly existence through the summer weeks.

Village tradesmen and ranchers who sell butter, milk, eggs, fruit and vegetables are hardly able to supply the demand, so they are supplemented by butcher, baker and grocer carts all the way from Santa Cruz.

From Felton as a sort of center, all along the Felton & Boulder railway, up every gulch and canyon and along every creek and branch, these summer birds of passage flutter down and set up housekeeping with as little apparent effort as the real birds.

## Ground Observers