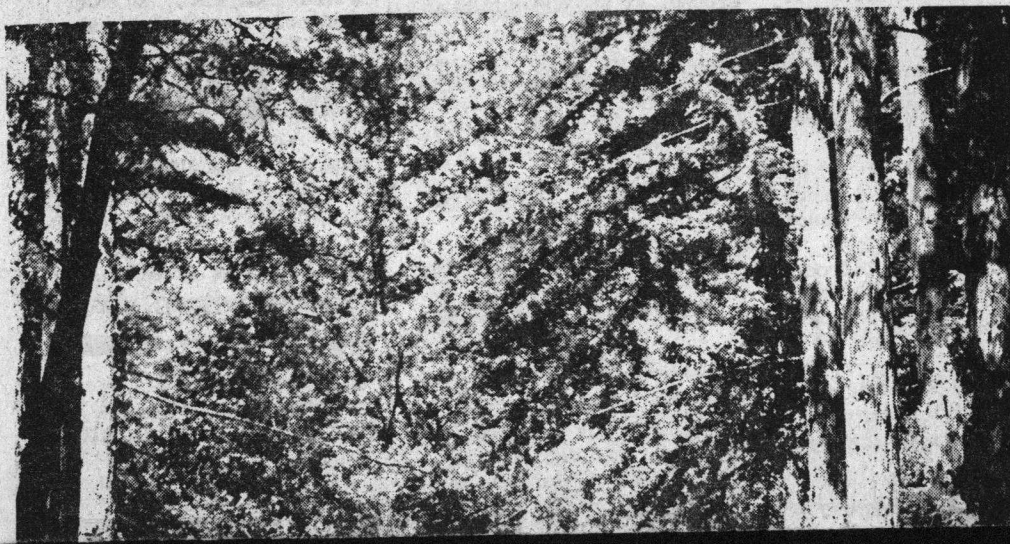


Camp Harmon: Where fun is the order-of-the-day, equality, an accepted way-of-life



GATE TO HAPPINESS FOR THE YOUNG HANDICAPPED -- Fronting Highway 9, about two miles north of Boulder Creek, is the entrance to Camp Harmon, Santa Cruz County Easter Seal Society's summer camp for the handicapped youngster -- News Photo.



by Jorj Neal

Barbara is sixteen years old. She likes to play the guitar, singing and to write songs. She does all exceptionally well. A room of chattering children will turn quiet to her steady strums and melodious notes. Barbara is gifted. And like all the children who attend Camp Harmon, Barbara is handicapped. Pretty Barbara is blind.

There are 60 youngsters attending the second session of the Santa Cruz county Easter Seal-sponsored camp. Barbara and eight other blind campers, including Soquel high junior Dennis Holter, are part of the experimental mobility school for the blind at San Lorenzo high.

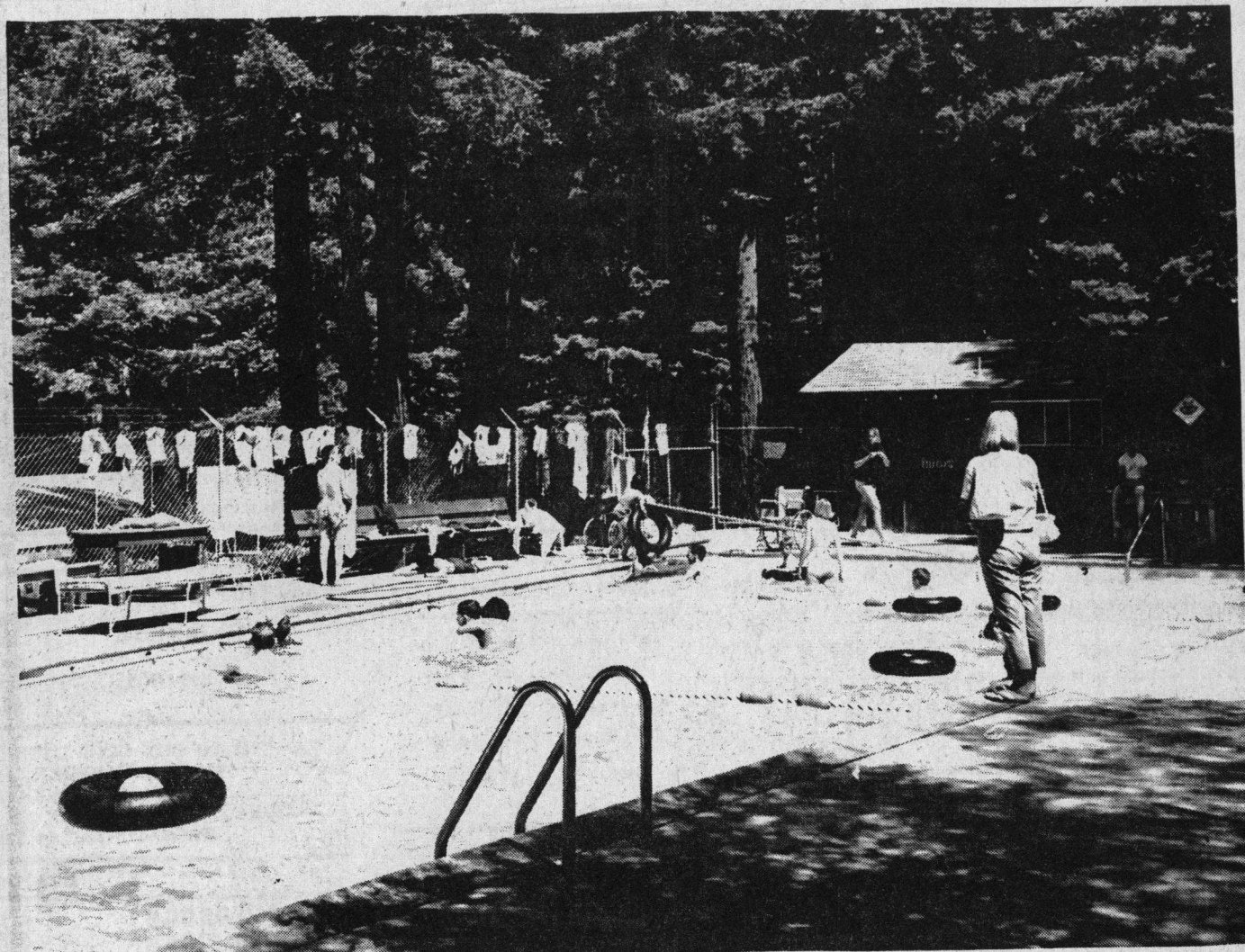
Afflicted with cerebral palsy, polio, mental retardation, paralysis, birth defects, and heart disease, children from almost every county in California will participate in one of the four summer sessions.

Camp Harmon's 26 acres of rustic mountain terrain welcomes the campers to fun and frolic. Twelve cabins, many of which have been donated by families and service organizations, a swimming pool, a lodge building which serves as a dining room and meeting hall, and a laundry room complete the practical decor of this "paradise".

Each cabin comes equipped with youthful (college and high school) watchful counselors who live with the campers 24 hours a day.

Rich Alcott, Ron Banks, Mary Boles, Mickey Bone, Kathy Brunk, Eric Burdick, Shari Burdick, Peggy Dains, Frances Fedian, Al Guterrea, Sandy Ham m, Jerry Henne-man, Vicki Huss, Mary Johnson, Judy Kaita, Pat Lappin, Shirley Looper, Dan McClure, Mike McCoy, Bonnie McCreary, Wendy McKay, and Margy Metzger help their proteges dress, fasten braces, push wheel chairs and tend to all physical needs.

The encouraging counselors include Chris Moore, Judy Nielson, Pat Nielson, Charlene Oshita, Deanna Palermo, Cheryl Pantaleoni, Tom Pezman, Beth Pippo, Mike Schmidt, Stephanie Scrowcroft, Ralph Sinick, Vivian Sinick, Paul Smith, Mary Spear, Bill Steiner, Candy Stinson, Audra Taylor, and Mary Thomas.



BUSIEST SPOT IN CAMP -- Youngsters and counselors alike find the Camp Harmon swimming pool a most pleasant place to relax, while getting in much-needed exercise (for the children), and precious sun-tanning time (for the counselors) -- News Photo.

Sierra club plans Big Basin hike

A hike in Big Basin, along the Opal creek trail, will be taken by members of Sierra club and others interested Sunday. The walk is regarded as "moderate" and is about six miles with a great variety of scenery.

Local firm to option 11 acres

Pacific Plantronics has taken an option on an 11-acre parcel of land in the industrial park in Santa Cruz, which faces Harvey West Blvd. Santa Cruz county investors are owners and the option was handled by Charles Hall of M. C. Hall and sons.

Pacific Plantronics is a local manufacturer in the communications and in the space program.

Hikers will leave park headquarters and walk up Opal creek trail to Rogers creek and then turn west and make a gradual climb up Meteor trail, going through a lush canyon filled with large ferns.

The return will be on Ridge fire trail, according to Philippa Pfeiffer. Chris Hodgson is leader and those participating are asked to meet at Big Basin park headquarters at 9:45, with hiking shoes, water and lunch. For more information call 722-2317 or 475-1325.



pay less, protect more
State Farm Fire & Casualty Company

HOMEOWNERS POLICY

Call Vincent E. Ryan
688-3683

Hole in one at Cabrillo course

Joe Braverman of 144 Bradley dr., Santa Cruz, made a hole in one at Cabrillo golf course on the 85-yard second

hole with a 9 iron, according to Frank Burger, professional-manager. He was playing with Barbara Gigler.

THOMAS O. SCHMIDA, M. D.

ANNOUNCES THE ASSOCIATION OF
DEAN O. BURROUGHS, M. D.

FOR
THE PRACTICE OF PEDIATRICS
AT

9055 SOQUEL DRIVE

APTOS, CALIFORNIA

TELEPHONE: 688-2071



CABINS IN THE REDWOODS BECOME HOME TO MANY -- A group of young handicappers, guests of the Santa Cruz Easter Seal Society, which sponsors the summer sessions at Camp Harmon, soak up some sunshine in front of their cabins nestled in the towering redwoods of the Santa Cruz mountains -- News Photo.

Cabrillo has sound budget for new year

Cabrillo college trustees, helped by a \$25 million increase in assessed valuation, have adopted their 1967-68 school budget and happily find themselves operating definitely in the black for the new school year.

Total budget is \$2.4 million and there will be a sur-

plus of some \$400,000. The budget includes a beginning balance of \$311,472, which is about \$88,000 more than presented in the tentative budget. Dr. Robert Swenson, college president, said the increase came from additional federal funds and savings from the 1966-67 budget.

Included in the budget are extra federal funds amounting to \$118,853 for special projects.

Educational costs amount to \$1,966,458 up from last year's \$1,678,800. The tax rate will remain the same as last year, 35 cents per \$100 of assessed valuation. Joe Chamberlain, board president, praised the work of Swenson and Lee Harris, assistant superintendent for business.

Budget items for education are \$80,978, administration; \$1,472,247, instruction; \$2500 health; \$7000 transportation; \$85,534, maintenance; \$187,089, operations; \$130,110, - fixed charges.

The building fund amounts to \$710,878; cafeteria will be \$78,618, and bookstore, \$224,177. Other items include community services, \$279,802; general reserve, \$100,000, and undistributed reserve, \$29,190.

The college will not increase meal prices in the new term, despite higher costs, and will effect economies to make up the difference.

Rich Wagner, Judy Wallach, Bill Walters, Bill Watkins, Kathy Weber, Joanne Widney, Robin Thompson, and Jon Moorehead.

According to Candy Stinson, 17, of Soquel, "Everyone is treated at Camp Harmon like a normal kid. We go fishing, hiking, swimming and boating. This is my fourth summer. Yeah, I really look forward to it."

Camp director Soquel high coach Ron Walters, is a two-year veteran of the camp. Having spent seven of his youth summers at one-time Easter Seal Camp Campbell, Walters explains, "I enjoy it. The wife and kids enjoy it, too. I've been around kids all my life. We just try to do in twelve days what we can. Give the kids some fun."

Shari Burdick of Soquel stresses, "You really feel like you're helping someone. It's rewarding. Gee, that word is trite. You have a feeling of accomplishment."

The kids enjoy especially variety shows i.e., various acts put on by each cabin, and dances with donated live music by such bands as "The Kinda Daft" from Cabrillo.

Cook and counselor Wendy McKay comments that most of the children come from culturally deprived homes. Many, however, are from normal families.

Wendy is one of those special kind of people with a soft heart for needy kids... kids who need her. She will spend hours with a captive soul displaying snapshots in a worn photograph book of the many who were her "favorites."

"The saddest part," she confesses, "is saying goodbye. I can only hope many will come back next year."

And there are counselors like Stephanie Scrocroft, editor of the camp news letter... "The Harmon Heresy." Stephanie, soothing a nervous rabbit while a small handicapped boy clasps his dirty fingers 'round her neck, is at Camp Harmon all the way from Montana. Her father has polio.

Counselor Dan McClure, handicapped with cerebral palsy (student at Santa Cruz high) contends that "the most important thing to do for a handicapped individual is to treat him as an equal." "It isn't done. And a person should do as much as he can."

And at Camp Harmon, equality is an accepted way-of-life. No question about it.

Big, expanded COUNTY NEWS is your best newspaper buy. Call 688-3293 for an advertising representative.

YOU CAN AFFORD A VACATION WHEN YOU

WASH and DRY
the **COIN-OPERATED WAY**

For Your Self-Service Laundry Needs....

TRY THE LATEST IN BIG CAPACITY
MAYTAG WASHING EQUIPMENT

30th & Portola
Santa Cruz

NEXT TO NEW SPEEDEE MART
COME IN AND GET ACQUAINTED