

Flood 1982

Register-Pajaronian

20 Pages — 20 Cents

Watsonville, Calif., Thursday, January 7, 1982

113th Year — No. 262

THE CLEANUP CONTINUES

Santa Cruz remains in bad shape

By BUD O'BRIEN

The lights came on again Wednesday night in Santa Cruz, but city officials are warning that did not signal a return to normalcy.

In fact, City Manager Dick Wilson said this morning that the chief fear of officials is that the return of power might delude people into believing the worst is over for the county's major city and that they could carry on business as usual.

But Wilson said the most critical situation facing the city — a water shortage — has not been alleviated

More storm news on pages 3, 6, 10 and 11

a whit by the return of electrical power. The 24-inch concrete line from the Ben Lomond reservoir, the major artery for the city's water system, is still out and may not be restored for a week to 10 days, Wilson said.

This means the city is operating with a minimal water supply that could be sucked dry if the most severe conservation measures aren't followed, the city manager said.

Over 100 families stranded

Devastation 'unbelievable'

By BUD O'BRIEN

Rescuers making good progress

Workmen are making a little better progress than they had anticipated in trying to make their way to the homes that were buried by a monumental landslide Monday in the Love Creek area near Ben Lomond.

County Supervisor Joe Cucchiara said this morning that heavy equipment from the county and Big Creek and Scarborough Lumber companies was chewing slowly into the morass of trees, underbrush, etc., that was sent hurtling down the mountain, burying six or eight homes during the Monday night deluge.

So far no bodies have been recovered, but one has been spotted. It is believed that at least eight people perished in the disaster. At first, authorities thought it might take weeks to clear away the massive slide and uncover the buried homes, but Cucchiara said they hope to cut that down to a matter of days.

Law enforcement officers and

Among other things, he said, this means residents should use water only for absolute necessities, such as drinking and cooking. He assured everybody that what water there is in the system, even

emergency crews also said they had "lots of trouble" with members of the news media, mostly television representatives. A reporter for San Francisco's Channel 7 reportedly got into a scuffle with volunteer firemen in Felton. Sheriff Al Noren took the microphone at a press conference this morning to ask in a rather grim tone that media representatives quit flying in planes and helicopters over the disaster scenes in the San Lorenzo Valley, activities that were proscribed by the Federal Aviation Administration last night but have been obeyed by some in the breach.

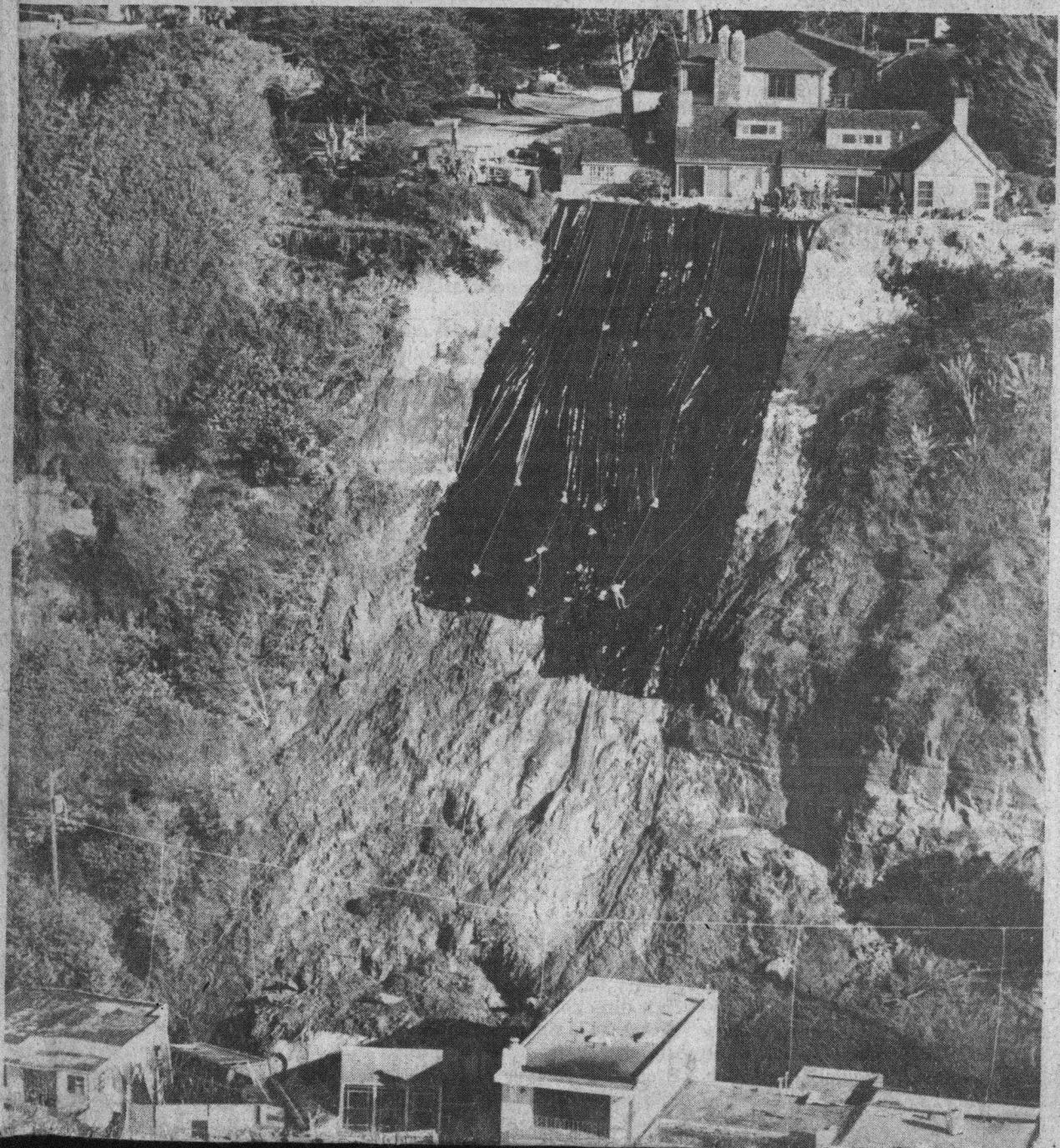
Noren said that helicopters had flown so low over the rescue operations at Love Creek that the rush of air had caused branches and limbs to fall, endangering rescue workers.

"You're going to kill somebody up there," Noren said to the assembled newsmen, "so STAY OUT OF THERE."

though some of it which is now being pumped in from north coastal sources may be turbid, is fit for consumption.

All industrial and most commercial

(Continued on page 2)



"The devastation is just unbelievable."

That's what Mabel Henri said this morning over the phone from her home in Eureka Canyon. She said she and her husband, Don, had seen nothing to compare with the damage caused by the drenching rains of Sunday and Monday since they moved to the area 22 years ago.

The Henris are among more than 100 families stranded in Eureka Canyon since Eureka Canyon Road was washed out by the Monday night deluge. (A mud-and-tree slide blocks the road just above Rider Road.) On her road, which runs off Eureka Canyon Road about five miles from Corralitos, there are about 10 families, all making it through the ordeal with considerable aplomb, Mrs. Henri said.

Mrs. Henri said the bridge that crosses Corralitos Creek on Eureka Canyon Road near the schoolhouse has been wiped out, and that some houses have been ruined in the Lower Highland Drive area.

She said residents in her neighborhood are not overly concerned about their plight, although there is no electricity. She expressed amazement that the phones still work.

dents are accustomed to heavy rains, Mrs. Henri said the 11 inches that fell during the Monday storm (her husband keeps track of rainfall for the Register-Pajaronian) was awesome.

Scores of other families are also stranded in adjacent hills because of the washout of Buzzard Lagoon Road. Helicopters were used Wednesday and today to evacuate people.

□
Near Kelly Lake, water remains knee high on Anderson Drive (off College Drive), making it nearly impossible for residents to reach their homes by foot. Inside, many of the homes have been soaking in water since the storm made its mark Monday evening.

Norma Johnson, who was helping bail mud out of a friend's home on Dogwood Drive this morning, said two feet of water sits in the garage of her home at 124 Anderson Drive. The water reached a high point of 2½ feet there.

Linda Moore, of 104 Dogwood, stood in her driveway with her furniture, drapes and other household goods.

"It damaged everything. Our whole street was just a river," she said.

At least six inches of mud and

home and most of the homes on Dogwood Drive, she said. "We even had to tear out the cupboards."

Although electricity has been restored to most of the homes in the area, many still do not have water.

Other problems in the area include a log jam at the Corralitos Creek Bridge at East Lake Avenue and Holohan Road. A crane was on its way this morning to help dislodge debris.

Mud made access to several stores and fruit stands nearly impossible, and many of the orchards in the area were flooded.

The power outages have forced many people to resort to using dry ice to keep their food cold.

The Krystal Oxygen Company on San Juan Road sold 10,000 pounds of dry ice between 11:30 a.m. and 1:30 p.m. Wednesday.

Sales had tapered off by today, a company spokesman said.

The UC-Agricultural Extension office is attempting to assess the amount of damage to agricultural lands in the county, and is asking farmers to call 724-4734 to report the effects of this week's storm. Farm adviser Ron Tyler is asking people to report their names, addresses, parcel numbers, type of damage and an estimate of the value of damage.



Photo by Sam Vestal

A slide above Beach Drive in Rio del Mar got a polyethelene covering from workmen this morning.

Storm damage nears \$250 million mark

By United Press International
Property damage in the six-county disaster area along the Northern California coast approached \$250 million today, with more than 400 houses demolished.

In the San Joaquin Delta, 50 miles east of San Francisco, 19 people were rescued Wednesday night as floodwaters threatened their homes.

The threat of spot flooding abated somewhat early today, officials said, but a spokesman for the Sacramento County Sheriff's Department said emergency crews were keeping a close eye on tidal charts and the rising water behind the delta's earthen levees.

As crews worked on washed-out roads to get heavy equipment into the hardest hit mountain towns along the coastal range south of San Francisco, thousands of Marin County commuters today were finally able to return to their houses along the reopened Golden Gate Bridge.

The span was closed for only the third time in its 45-year history because of mudslides on Marin County hills to the north.

Five people in Marin County were killed, 147 injured and at

least 2,800 houses damaged, 48 of them destroyed.

A slide that forced the California Highway Patrol to order the Golden Gate Bridge closed Wednesday swept two houses down the scenic slopes of Sausalito, killing one woman. About 300 people were evacuated, but most were allowed to return home.

"It didn't look like a slide, it looked like an avalanche," said witness John Franco.

Damage reports from other hard-hit counties:

—San Mateo County: Three children died when a mudslide crashed into their Pacifica home. Damage estimates are in the area of \$20 million. San Mateo and Daly City each reported one traffic-related death. The Butano Creek-Pescadero area is still isolated. Moss Beach and Montara are flooded and roads are wiped out north of Montara.

—Sonoma County: Although no deaths or injuries were reported, more than 1,500 homes were damaged and 20 homes destroyed. Private property damage is estimated at a "rock bottom" \$16 million. Minor flooding continues.

—Humboldt County: Destruction of a bridge, several roads and a levee problem left the county with a \$3 million damage bill. Authorities estimate damage to private homes at \$250,000 and say six houses are threatening to slide into a creek. No deaths or injuries reported.

—Contra Costa County: No deaths or injuries reported. Authorities said there was "a lot of damage" but refused to estimate a dollar figure or how many homes were affected. Some flooding continues.

Disaster aid to be available

President Reagan today declared Santa Cruz and four other storm-ravaged counties of California federal disaster areas, making them eligible for assistance in recovering from torrential rains and devastating mudslides.

The declaration was announced by Louis Giuffrida, director of the Federal Emergency Management Agency, which oversees the federal government's response to natural disasters.

The other counties are Contra Costa, Marin, Sonoma and San Mateo.

Robert Vickers, regional director of the Federal Emergency Management Agency in San Francisco, was named coordinating officer for the federal assistance effort.

Such a designation frees federal grants and low-interest loans to individuals and business owners; state proclamations earlier had concentrated on reconstruction of roads and other public services.

Under a federal emergency, homeowners suffering from disaster damage could apply for loans of up to \$50,000 to restore their houses, \$10,000 to replace furnishings, or \$55,000 for both. The loans would carry interest rates of 9.25 to 9.5 percent.

Business owners could also qual-

(Continued on page 2)

Forecast

Fair through Friday. Light winds.

Details page 2.



Photo by Kurt Ellison

Eureka Canyon Road is cut off, and is likely to be for months.

Inside

Classified.....	17-19
Comics.....	16
Crossword.....	5
Deaths.....	2
Editorial.....	20
Family.....	4
Garden.....	8
Movies.....	15
Sports.....	12-14
Television.....	15