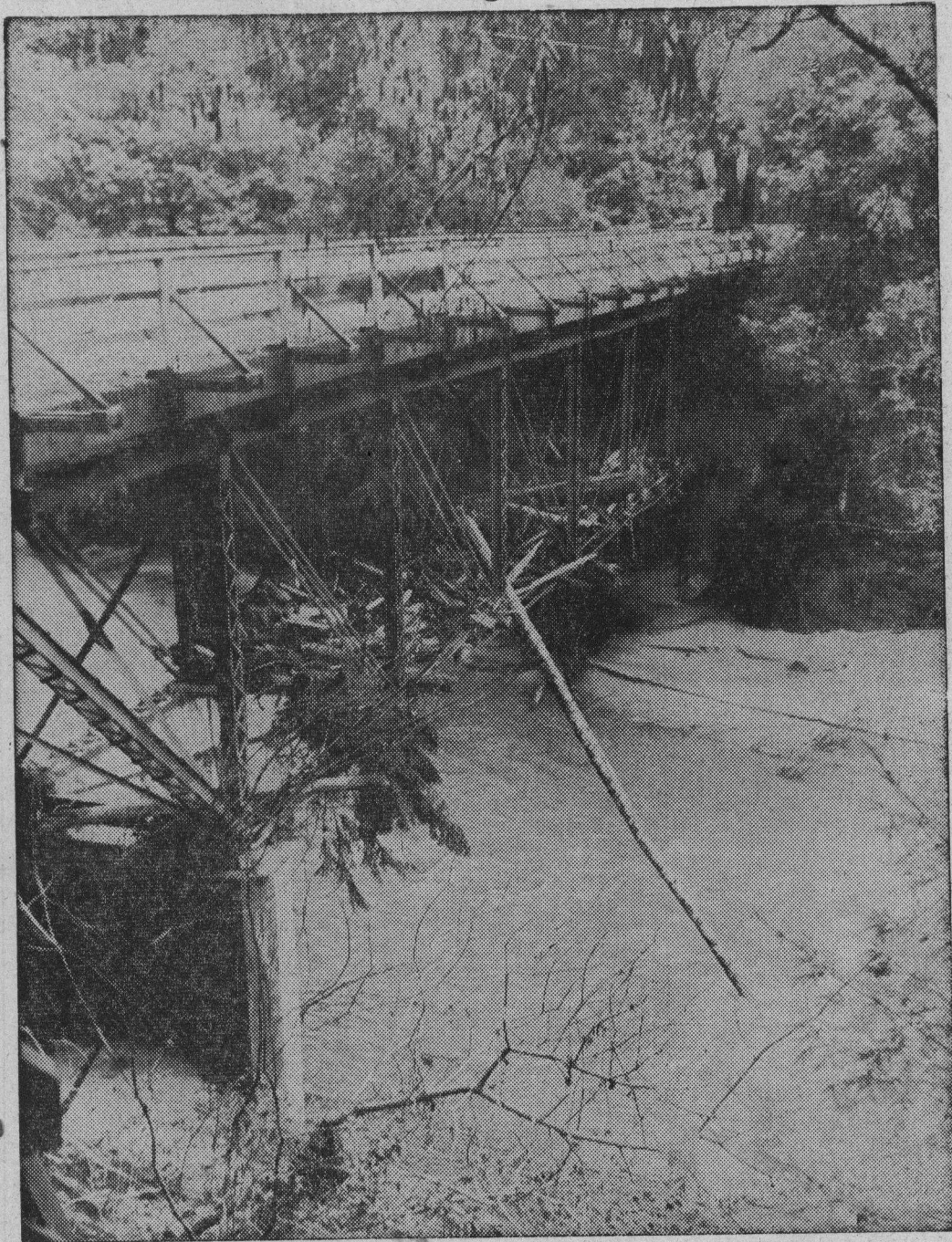


Floods 1955

Glen Arbor Bridge After Flood



Timbers were stuck in the understructure of the county's bridge across the San Lorenzo at Glen Arbor during the flood

stage in the San Lorenzo valley. The bridge was closed by the county after the flood and a complete inspection of the

bridge has not yet been completed. However, county crews have removed the timbers and debris from the understructure.

S
F

S
coas
San
head
lead
ious
Far

C
ly
drea
vat
ing

R
Da
Ar
Eas
spo
Ma
cla
wa
Sa
spe
org
for
en

P
L
D

sc
el
be
sc
di

vi
ed
bu
m
is
so
bo

g
ca
so
p
in
ki
g
a

r
lo
n
r
g
n