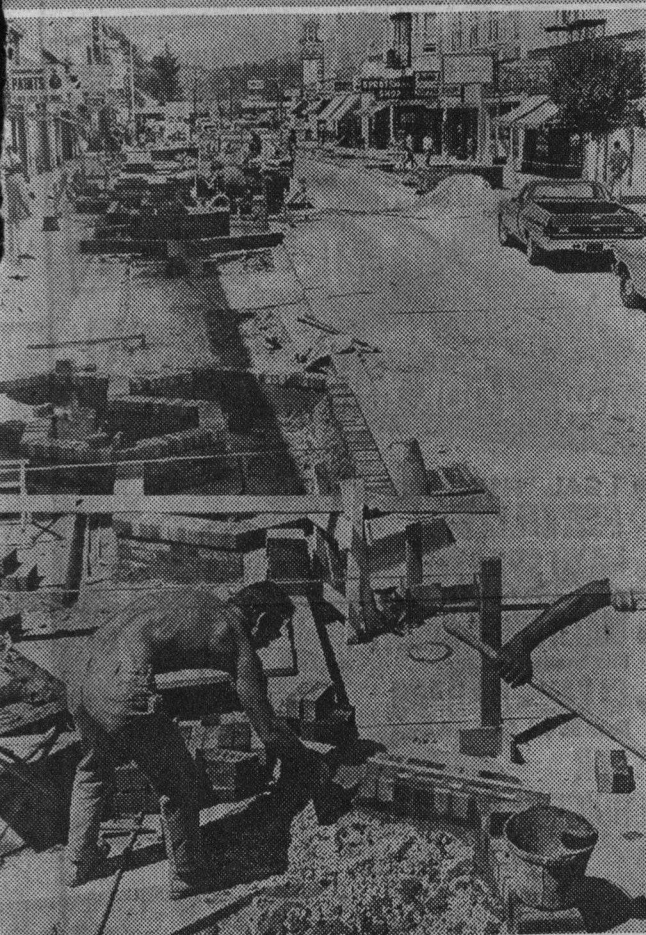


mall



Workman places finishing touches on a brick planter area in the northern sector

**BECKMAN'S
HOFBRAU**

"The most unusual eating place in Santa Cruz"

1723 Soquel Ave. 426-2555

of the Pacific Garden Mall. City engineers report work on the mall is proceeding with "a minimum of problems" and one-day north traffic will be restored in the northern two blocks of the mall in about three weeks. Work will begin in two weeks on a garden house structure at Cooper Street, just out of the foreground of this photo.

This map, prepared by the Santa Cruz City engineering staff, illustrates the best ways for motorists to avoid construction projects in getting to downtown parking lots. Numbered symbols denote

(1) major mall construction area; (2) Pacific-Soquel storm drain major construction area; (3) Soquel Avenue bridge widening construction area; (4) alternate route to

Cedar Street parking lots; (5) alternate route to Front-River streets parking lots; (6) alternate route to Cedar Street parking lots. The parking lots are distinguished by slanted lines.

Downtown Work Being Done On Mall, Bridge Widening And Storm Drains

A good portion of downtown Santa Cruz looks like maybe lighting hit a tinkertoy factory.

Three separate construction projects — the Pacific Garden Mall, Soquel Avenue bridge widening and a Walnut Avenue to Soquel Avenue storm drain — are playing hob with motorists' efforts to get from one place to another in the downtown vicinity. Drivers and radiators alike are boiling over with alarming frequency.

Members of the mall committee hope the public isn't blaming them for the whole mess. Said Committeeman James Hammond of the three projects, "There really isn't much anybody could do about the timing. They just all came together."

Hammond said his committee had wanted to start construction of the mall three months earlier than the actual beginning date. The start was held up for three months, however, to await the outcome of the vote on Proposition 9, the measure which would have thrown financing of all non-private construction in the state into a tizzy.

The committee had hoped to have the mall completed by this

summer.

But the bridge construction had to come at this time because water flow in the San Lorenzo River is lowest now. The \$350,000 project will add two lanes to the bridge for a total of four. Another \$35,000 will go for approaches to the bridge, but that contract has not yet been let.

The mall also will cost \$350,000, all but 10 per cent of it to be paid by property owners and merchants facing on the mall. The city will contribute \$50,000 in general utilities improvements and maintenance of the mall facility.

The storm drain, of course, also had to go in this summer to be of any use during next winter's rains.

Meantime, how to get around? City engineers have analyzed the problem and recommend, in the main, using alternates off Broadway and Water, Laurel and Mission Streets to reach

Cedar Street where most of the city's parking lots are located.

426-3324

**Bruno's
SURF BOWL**

NOW APP

THE ROU

5 DAYS A WEEK —

115 Cliff Street (Around

**SNEAK
Preview
Friday**

While the astronaut
Daddy was
The run-away hit

**EXCLUSIVE
SAN JOSE
ENGAGEMENT**

07