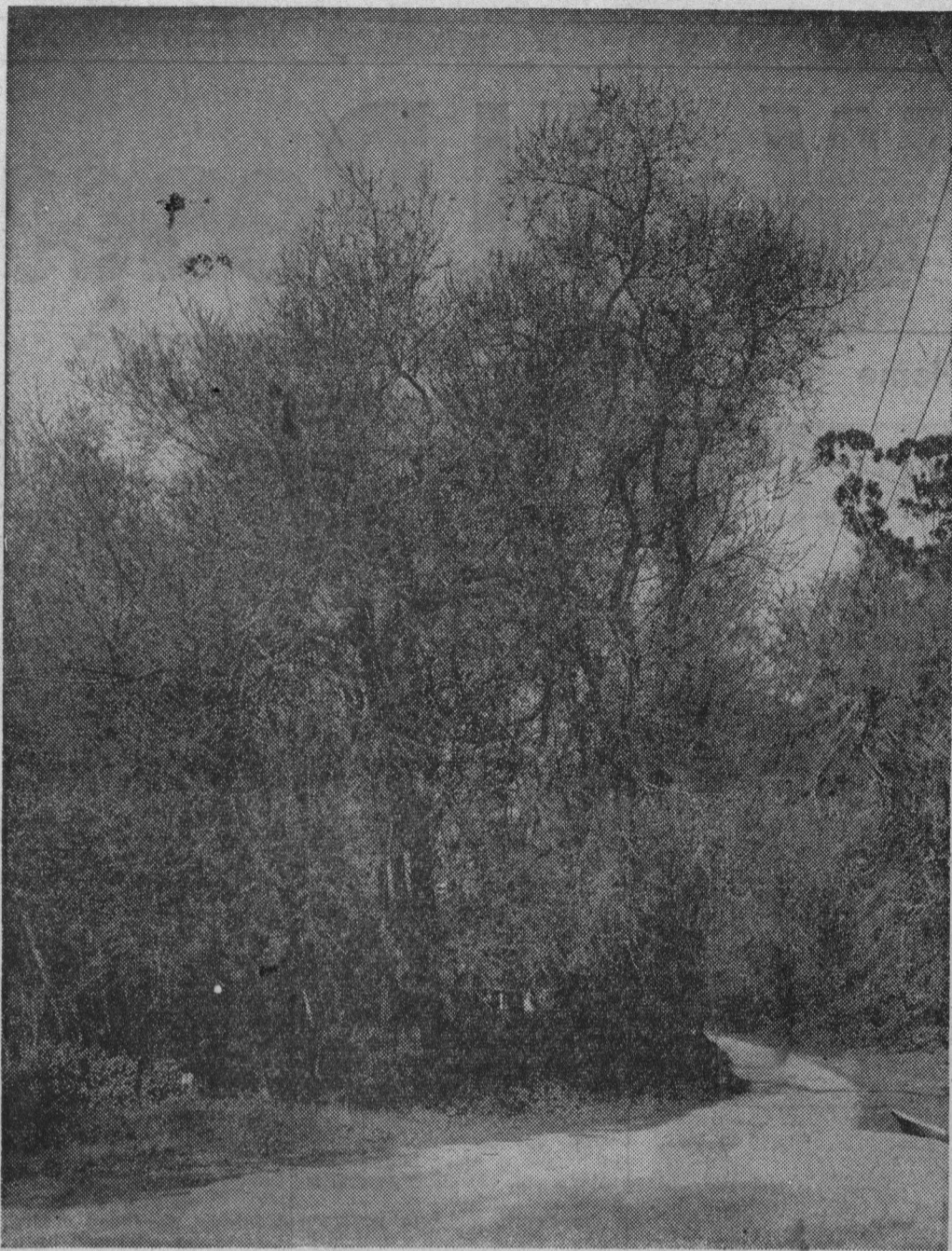


### Sitka Willow May Be Tall, Dense



This is reported to be a Sitka Willow. It was photographed near the bridge which crosses

Aptos creek on the lower road coming into Rio del Mar. This

tree does not resemble other willows because of its scaly bark and broad leaves.

## Sitka Willow Is Peculiarity Among Trees Of West Coast

(Editor's Note: This is another in a series on trees that are found growing in Santa Cruz county.)

than other willows. They are spatulate shaped and deep-veined. The foliage is dark green on top and whitish underneath.

The Sitka willow, (*Salix sitchensis*) which likes river and creek banks, is found from Alaska, Montana, Oregon, along the California coast range, in the Sierra Nevadas and down the coast to Santa Barbara.

The tree sometimes grows to 35 feet high. Usually it is crooked. The crown is dense and rounded. The wood is soft, close grained.

It is also known as the satin, Coulter, Velvet or silky willow.

Its leaves are much broader

### Leaves Are Outstanding



The leaves of the Sitka Willow set this tree apart from the others of its species. They are broad, broader above than below the middle. They are dull green in color. The flowers are slender catkins. There are

small leaflets spurting out at the stem of each twig.