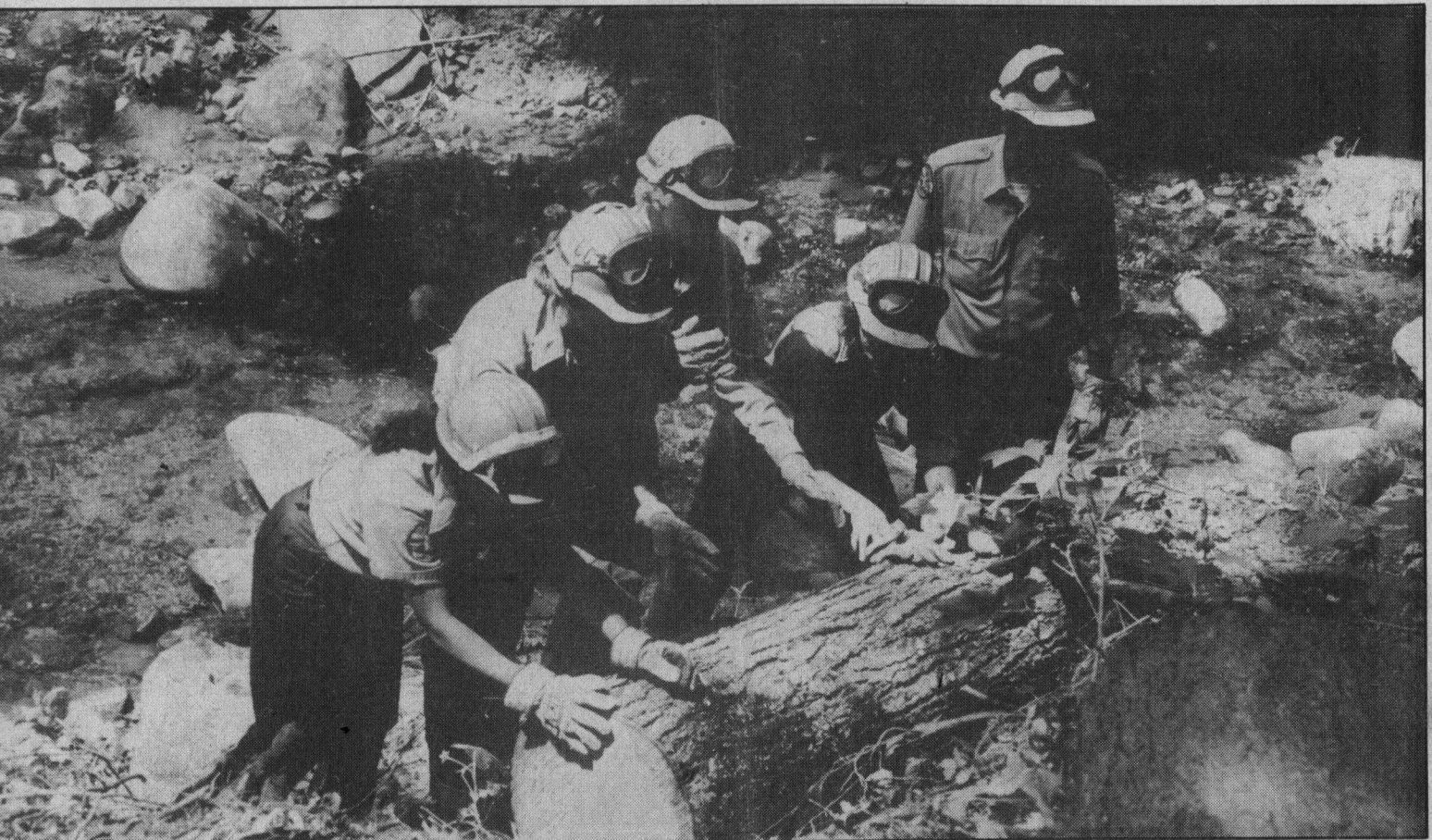


CF Earthquake 1989 - Santa Cruz County RP 4/28/90

## Epicenter repair



Mike McCollum

Members of the California Conservation Corps turned out in force yesterday to repair the damaged trail at the epicenter of the Oct. 17 earthquake. About 175 corps members cleared

fallen trees and landslides from 2½ miles of trail in the Forest of Nisene Marks State Park. The trail has been closed since the quake. Park rangers were hopeful that it could reopen soon.