

Weather Report

Temperature for 24-hour period ending at 8 a.m. yesterday, maximum 69, minimum 43; for 5 p.m. yesterday, maximum 62, minimum 45. Rain-fall .45.

Monterey Bay Area—Partly cloudy today, overcast tonight and tomorrow. Continued cool, low 45 to 53, high 58 to 63. Westerly winds 5 to 15 knots.

Santa Cruz Sentinel

Serving Santa Cruz County for More Than 100 Years

SUNDAY EDITION

110th Year—No. 85

Second Class Postage
Paid at Santa Cruz, California

SANTA CRUZ, CALIFORNIA



SUNDAY MORNING, APRIL 10, 1966

10c

Sunday and Daily
Excepting Saturday

THIRTY-EIGHT PAGES

BC Skeleton Identified As That of Missing Coed

By Ron Reeves
Sentinel Staff Writer

The 40-month search for Judy Williamson ended here yesterday.

Bones found Thursday in a remote canyon above Boulder Creek have been positively identified as those of the missing University of California at Berkeley coed.

But the case isn't closed—it is only beginning. The 18-year-old medical student is believed to have been abducted and murdered, and detectives have clues which indicate how she met her violent death.

It has been exclusively learned by The Sentinel, although sheriff's officials did not release the information, that a knife was found along with bones, fragments of clothing and Judy's watch.

The knife is a common-style kitchen paring knife with a two-inch blade. A piece of tan cloth, possibly from a blouse worn by the victim, had several rips which might have been caused by cuts from a knife. The girl's breast bone has a series of nicks as might be inflicted by a knife.

Positive identification came yesterday morning after the skull and jawbones were examined by the victim's family dentist. Clothing and the watch also matched description of victim's possessions.

Santa Cruz sheriff's officers declined to theorize on how or when Judy was murdered.

But Sheriff Doug James said the bones had been exposed "for at least a year" and quite possibly longer.

James said there was a "possibility she could have been murdered someplace else

Not all of the skeleton was found, despite an extensive search which included screening of the surface soil. Deputies did not discount the possibility that the missing bones might have been dragged away by animals. The vicinity is littered with garbage and trash thrown over the roadside.

The brunette coed has been missing since she left her home on October 29, 1963, to catch a bus to Berkeley where she was to attend pre-med classes.

Investigation turned up an Albany service station attendant who said he had seen a girl struggling on the street with a dark-complexioned man. Her broken umbrella was found in a trash can and some of her books, blood-stained, were located in a trash bin on the Berkeley campus.

An intensive investigation was launched and has been maintained by Albany Police Chief Ralph Jensen. In the summer of 1964 he said he believed her abductor was someone she knew who offered her a ride to the campus. Instead, Jensen theorized, he drove to some lonely spot where he killed her for resisting his advances. Jensen at that time said the killer "found a perfect hiding place for her body."

Sheriff Doug James said the canyon where Judy's body was found was a near-perfect hiding place. It is in a remote area near Waterman Gap about 10 miles north of Boulder Creek.

"Finding the skeleton was one chance in a million," Undersheriff Paul Tara mused.

The bones were spotted Thursday afternoon by four Santa Cruz men who were

base of the canyon and saw a smashed automobile.

They climbed the incline, checked out the vehicle and then located the bones, 40 feet away. They gathered up the bones, along with bits of clothing and a wrist-watch, took them to Boulder Creek and notified the sheriff's office.

"If the car hadn't been up there, the men would never have come out of the canyon and the bones wouldn't have been found," Tara commented.

Tara said that although the canyon is little-traveled, a surveyor's crew was in the vicinity a short time ago. Marker flags showed they had been within a few feet of the bones, but did not spot them.

It was first believed that the bones and car were associated. Deputies believed the car plunged over the embankment and its injured driver crawled out and died trying to reach help.

Some questions were unanswered.

The car doors were closed and it appeared that the license plates had been pulled off. The bones also appeared to have been there longer than the auto.

A registration card indicated the 1942-model vehicle was owned by Fred Rudell, Santa Rosa, and had been used as late as February, 1965.

Rudell was contacted and told deputies that he had "ditched" the auto by rolling it over the embankment last fall. He said the car had "froze up" and rather than have it towed away he pushed it over the cliff. He was assisted by four men. Deputies said all five men told the same story.

"It was pure coincidence," Rudell

to the East Bay with the skull and jawbones. Dr. William F. Clark, Berkeley, the Williamson family dentist, made the identification.

"Positive identification was made as far as we're concerned by Dr. Clark," Sheriff James said.

Dr. Clark said he recognized the permanent fillings and identified some temporary work he had done on the girl's teeth. She had an appointment to have the permanent fillings put in on the day following her disappearance.

In addition, the skirt material matches what the girl wore when last seen. The material is hand-woven and had a tag reading: Specially Hand Made and Fashioned by Ruby Rockhold. The victim was wearing this make skirt when she disappeared.

The girl's wrist watch was also unusual. It has a thick crystal and a woven metal band designed into a floral pattern. A pin also was found at the scene. It was a UC Masonic organization emblem. The victim was a member.

Miss Williamson, whose ambition was to be a heart surgeon, was known as "Pumpkin" by her parents. She was an only child.

Detectives said her parents, Mr. and Mrs. Stanley Williamson, are now in Europe and are being notified by cable by Chief Jensen.

Sheriff James said the investigation will continue and he promised his department will work closely with the Albany police force.

"If we can turn up anything of assistance here, we will. Basically, it is the discovery of a body and its identification," James commented.

The remains and other evidence included

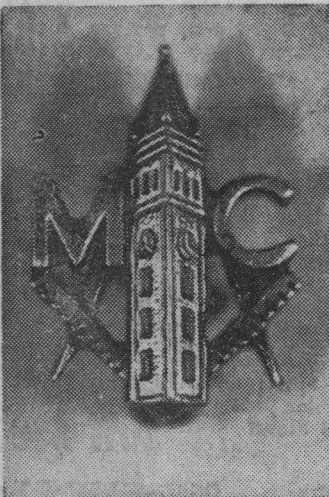


Judy Williamson



and her body dumped here."

The spot where the bones were found is a brushy ledge, 125 feet below the pavement of Highway 9. Detectives said the girl's 138-pound body might have been thrown from the road and rolled to its resting place.



Judy Williamson's pin which was found with the victim's bones. It is the University of California Masonic pin. The coed was a club member.

Runaway Car Kills SC Man

Edwin Kenneth Foskett, 42, was killed early yesterday morning when he apparently slipped and fell under his automobile as it rolled down an incline at his residence.

Highway patrolmen said Foskett was found under the rear of his vehicle. Patrolmen and Deputy Coroner James Powell said it appears that Foskett was working on his vehicle at about 1:45 a.m. possibly at

hunting for leaf mold to sell or redwood burls to be fashioned into novelties.

The men, Harold Crafton, 34, Soquel, and Santa Cruzans Edward L. Hosier, Louis W. Hosier, 31, and Hobert A. Cox, 24, looked up the steep embankment from the

liam Shaw stated, "The car had nothing to do with it.

Several deputies remembering the much-publicized search for the missing coed telephoned Albany's Chief Jensen. He came to Santa Cruz yesterday morning and returned

ing the knife and ripped clothing, will go to a criminalologist for further tests.

It is also expected that deputies will continue to search the canyon area for further clues, though Undersheriff Tara commented: "We have excavated the area."

U.N. Moves Against Rhodesia

Britain Gains Okay To Stop Oil Tankers

United Nations, N.Y. (AP) — The U.N. Security Council last night called on Britain to use force, if necessary, to halt tankers believed to be carrying oil for Rhodesia.

The vote was 10-0 with five abstaining. Those abstaining were Mali, France, Uruguay, Bulgaria and the Soviet Union.

The vote came after a full day of debate in which African countries, with the support of the Soviet Union, sought unsuccessfully to broaden a British-sponsored resolution to authorize the use of force to topple the rebel government of Ian Smith.

British Minister of State Lord Caradon had insisted that the 15-nation council limit its decision to measures to halt tankers headed for Beira, Portuguese Mozambique. The British proposal mentioned specifically two Greek-owned vessels, the Joanna V now in Beira port, and the Manuela which Caradon

Manuela had been warned he faces severe penalties if he unloads his cargo at Beira.

In London, meanwhile Britain's Conservative party accused Prime Minister Harold Wilson of double-dealing in placing the oil tanker problem before the council. Enoch Powell, opposition spokesman for defense, said Wilson had assured the House of Commons he would not throw a naval blockade around Beira.



This label helped make the identification of Judy Williamson's remains more positive. It reads "Specially Hand Made and Fashioned by Ruby Rockhold." It is known that the victim was wearing a skirt of this type

at the time of her disappearance. Fragments of the wool plaid skirt also match swatches of the cloth from which Miss Williamson's skirt was made.

Study Shows Smokers Tend To Be More Disagreeable

By Alton Blakeslee

New York (AP)—A psychologist studying the personalities of nearly 1,400 cigarette smokers

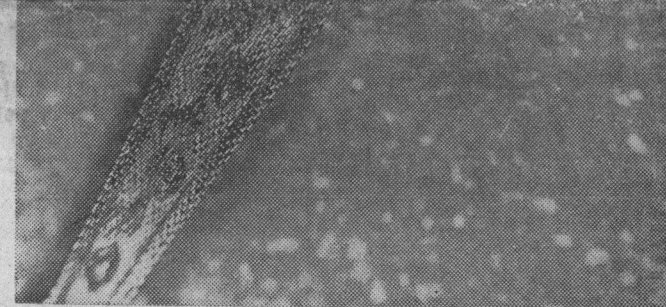
pendable or persevering, less orderly in personal habits, and less mannerly and refined.

These findings, said Dr. Gene M. Smith of Harvard Medical

pleted by 728 nursing students, 374 college students, and 284 high school students, Dr. Smith told a symposium. The symposi-

formation on possible constitutional and psychological differences between smokers and non-smokers.

He said the association be-



This unusual watch, found with the bones of Judy Williamson, is the same as that worn by the UC coed when she disappeared.



The remains of Judy Williamson were found in the brush at the left of this photo. The location is on a ledge some 125 feet down a steep embankment off Highway 9. At center through the brush is an abandoned automobile which was spotted by four hikers.