

County's Rare Beauty Along Scenic Skyline

By Alan Pugh
Sentinel Staff Writer

High in the Santa Cruz mountains . . . at the north end of the county where Santa Cruz arrows into San Mateo on one side and rolls over into Santa Clara on the other . . . is a wide, park-like spot on Skyline drive.

It is to be designated a lookout spot.

No better designation could be found, because a motorist can see literally for hundreds of miles. There's Mt. Tamalpais, and there's Mt. Hamilton.

There's the broad reach of Santa Cruz county and off to the west there's the majesty of the Pacific.

It truly is a beauty spot. And a group of San Mateo, Santa Clara and Santa Cruz county residents want to keep it that way.

They are members of the group seeking to preserve the Skyline as a scenic highway.

Recently they drew a resolution for the San Mateo county board of supervisors. That group adopted it as an emergency measure to preserve scenic

views along the highway. The ordinance would prevent helter-skelter residential development along Skyline drive from Half Moon Bay road, just west of San Mateo, some 20 miles southward to Santa Cruz county. Under the ordinance, no new buildings can be built on less than two and a half acres of land and within 1000 feet of the boulevard.

Motorists who have driven the Skyline can readily appreciate benefit of such an ordinance. Especially so when they take a look at the jam-packed and unorganized residential developments that mar the beauty of Skyline as it rolls into Daly City and San Francisco.

Ad Fishel, an architect from Palo Alto and a member of the Committee for Green Foothills, has this to say of the scenic drive!

"Skyline drive is a ridge route of spectacular beauty. It is included in the California Scenic Highway system now in the planning stage. Plans for extending the road north across lands of the San Francisco water district and south into the Monterey Bay area and beyond have long been discussed."

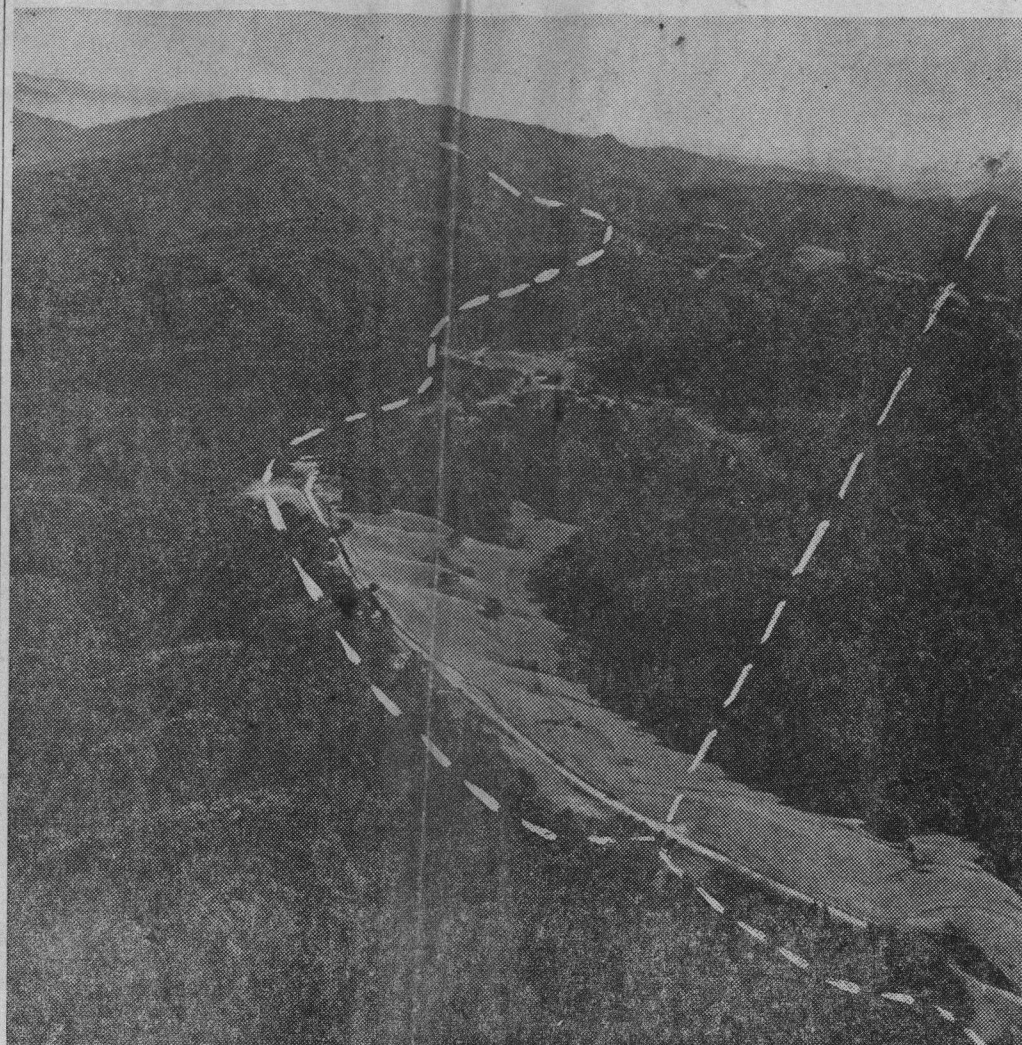
Fishel said members of the Committee for Green Foothills conducted a pedestrian survey along 25 miles from the Half Moon Bay intersection to the Saratoga Gap intersection. "An opportunity, rare indeed today, still exists for environmental design on a grand scale that would set the character of the western foothills forever. . . ."

"Fortunately, the scenic parkways concept has had strong support for several years in Santa Clara, San Mateo and Santa Clara counties." He pointed to the San Mateo supervisorial action and said

Ailing Heiress Reads Tales

San Francisco (AP).—Woolworth heiress Barbara Hutton read fairy tales in her hospital bed as she awaited diagnostic tests of an intestinal ailment at Presbyterian Medical center today.

Miss Hutton, 52, was flown to San Francisco Monday night after she experienced severe intestinal pains at her Connecticut



A lookout site, where Skyline drive crosses over into Santa Cruz county, is proposed in the plan to preserve Skyline as a scenic drive. In

◇ ◇ ◇

the photo, looking south, the small semi-triangular portion at the right is in San Mateo county. The center portion is in Santa Cruz county with the Santa Cruz-Santa Clara county

boundary being the dotted line that winds off to the left along Skyline drive. The Santa Cruz county spot is described as being of spectacular beauty.

◇ ◇ ◇

he hoped similar action would be taken by the board in Santa Cruz.

Committee members have prepared a brochure on Skyline drive development. It describes the Santa Cruz section:—

"At about 24.5 miles (from the Half Moon Bay intersection) Skyline crosses into Santa Cruz county. On the west side is the site of Pacific school, secluded in a deep bowl several hundred feet below the road. Beyond the school site, on the east side, are two or three wooded sites, eminently suited to parks or trail loops. These areas extend out into Stevens Creek canyon, providing a dramatic view down the gorge to the south. . . ."

"The Skyline continues as a

wooded ridge road. At about 25 miles, there is a grassy knoll above road level on the west which provides spectacular views over the forests of Big Basin State park and the wooded ridges of Santa Cruz county. Because this knoll affords a rare view to the east over Monte Bello Ridge to the Mount Hamilton range east of the bay, its potential as a view point should be studied."

The description of Santa Cruz

portions concludes with: "Because it is relatively undeveloped residentially, it provides a scenic gateway to Big Basin State park." . . .

Fishel and his fellow committeemen said they are now pushing for ordinances in other counties and for state sanction on warding off developments that would encroach on the beauty "that should be left for all—a beauty that is a heritage of California."

More than a cold tablet . . . fights coughing, too!

Rexall SUPER ANAPAC
AC ANTI-COUGH COLD TABLETS



Help Everywhere a Cold Hurts!

- calm the urge to cough
- relieve headache, and all-over pain
- clear stuffed-up nose
- reduce fever
- relieve watery eyes

Up to 12 Hours' Relief with ONE Capsule!

Rexall TIMED ACTION
COLD CAPSULES



Just one capsule gives up to 12 hours' sustained relief from cold and hay fever miseries, and contains the cough-suppressor, D-methorphan.

10's 98¢

**NEW! REVLON
'PROFESSIONAL'
HAIRSPRAY
ONLY 99¢***

LIMITED TIME