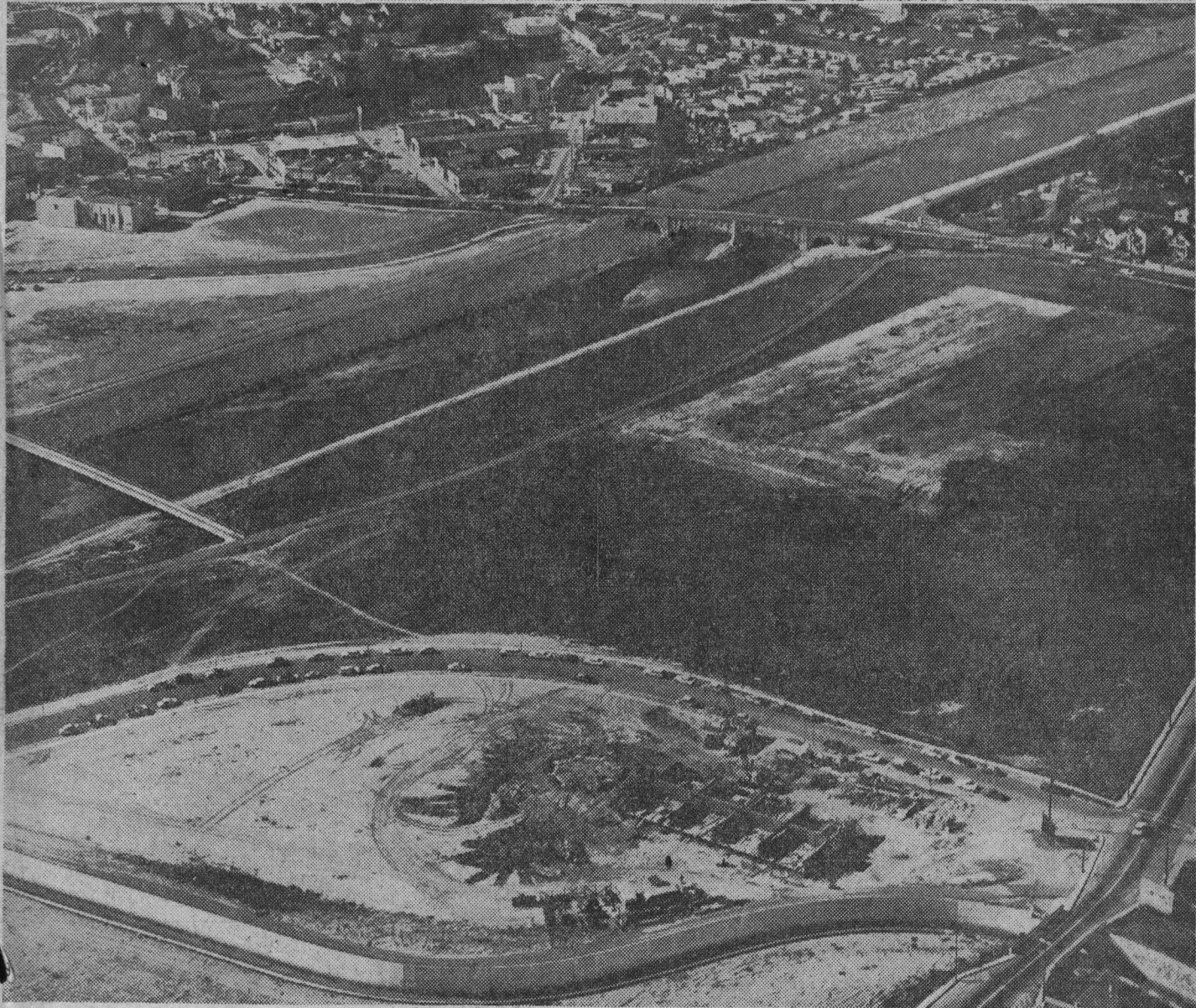
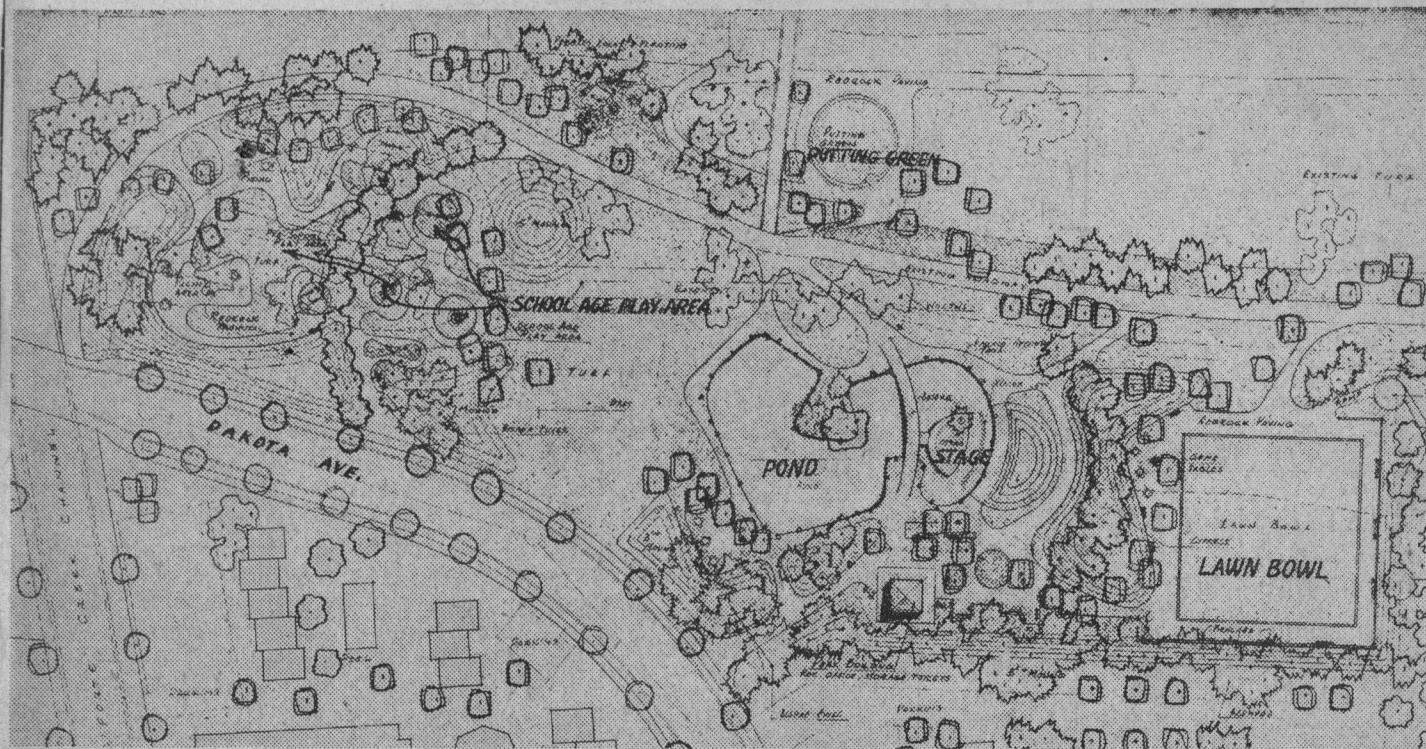


Redevelopment Area Park Plan



(Above) Proposed "neighborhood park" designed by the prominent landscape architectural firm of Royston, Hana-Sa, Mayes and Beck for the men's Lorenzo Park redevelopment project. The park, with an

estimated cost of about \$90,000, will be paid for largely with federal funds. It will be completed this August and presented to the city. Envisioned as serving all ages, from pre-school children to senior citizens, the park is composed of areas shel-

tered from each other by variations of elevation and by trees and shrubbery. In the center, a shallow, decorative pond with a delicate walkway will cross past a stage that can be viewed from an amphitheater built into a hillside. Play areas for young-

sters, game tables and lawn bowling for the older citizens are planned. The park will be coordinated with the river bench-land and proposed county office-courthouse complex, dirt pile at right in photo.

◇ ◇ ◇