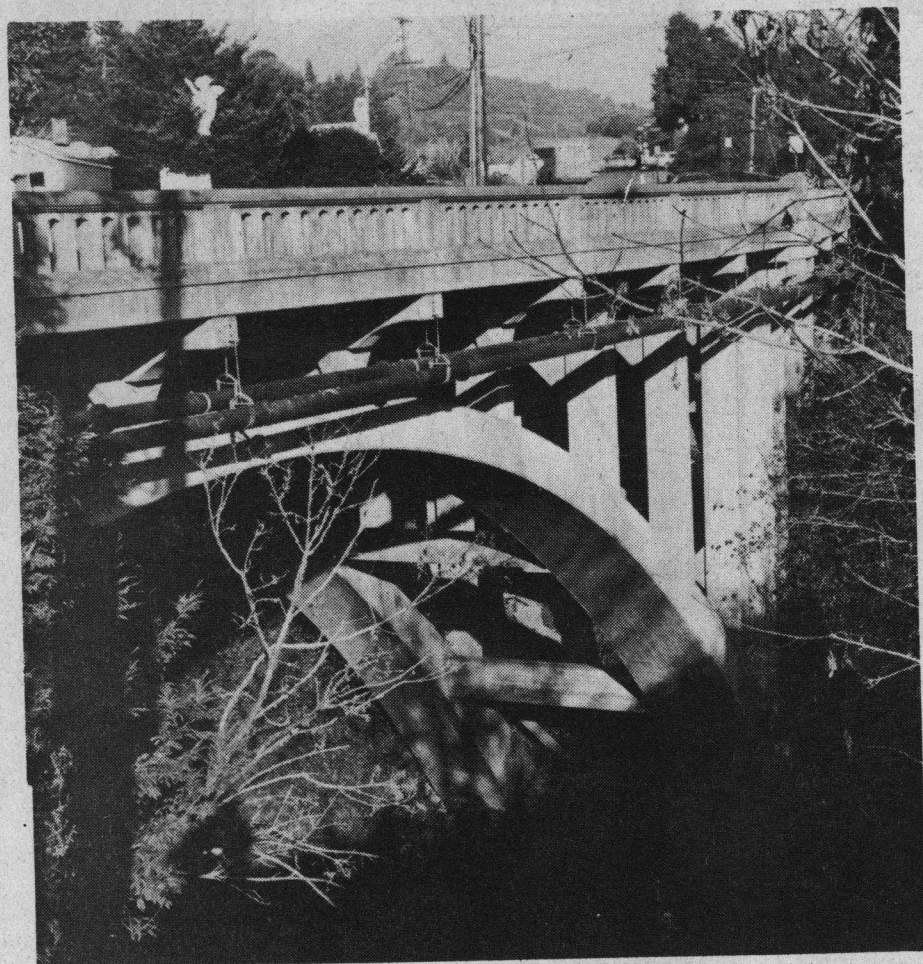


# Bridges

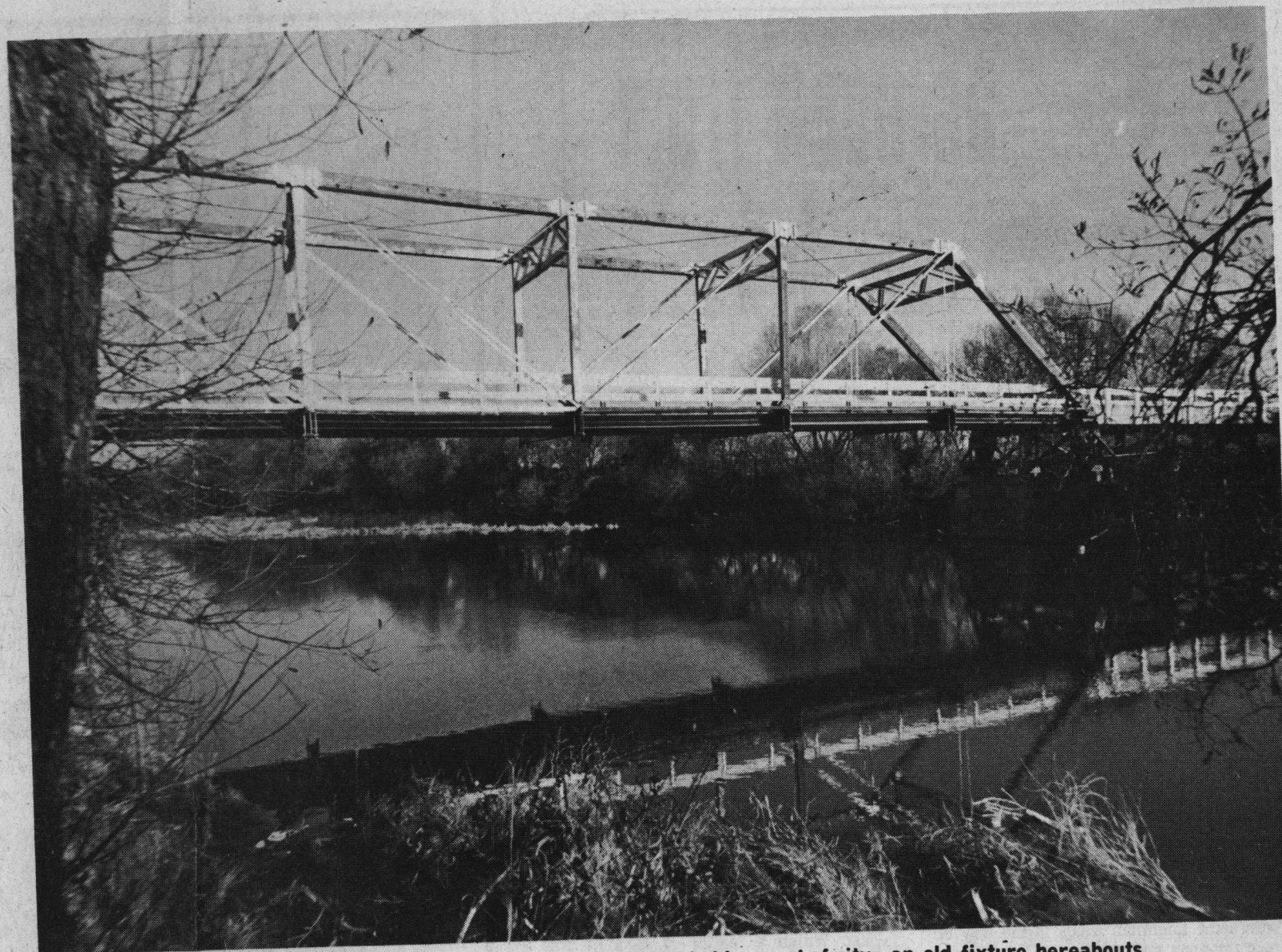
8—Cabrillo Times & Green Sheet, Thursday, March 4, 1976

## County's bridges —links with past

A look at some of the unusual and better known bridges of Santa Cruz County — a few were important links in early day transportation network.  
(Photos by Sam Vestal)



Graceful arching (and curved) concrete bridge spans Aptos Creek where old Highway 1 enters Aptos Village.



Weight limit was posted recently on one-way Thurwatcher bridge west of city, an old fixture hereabouts.







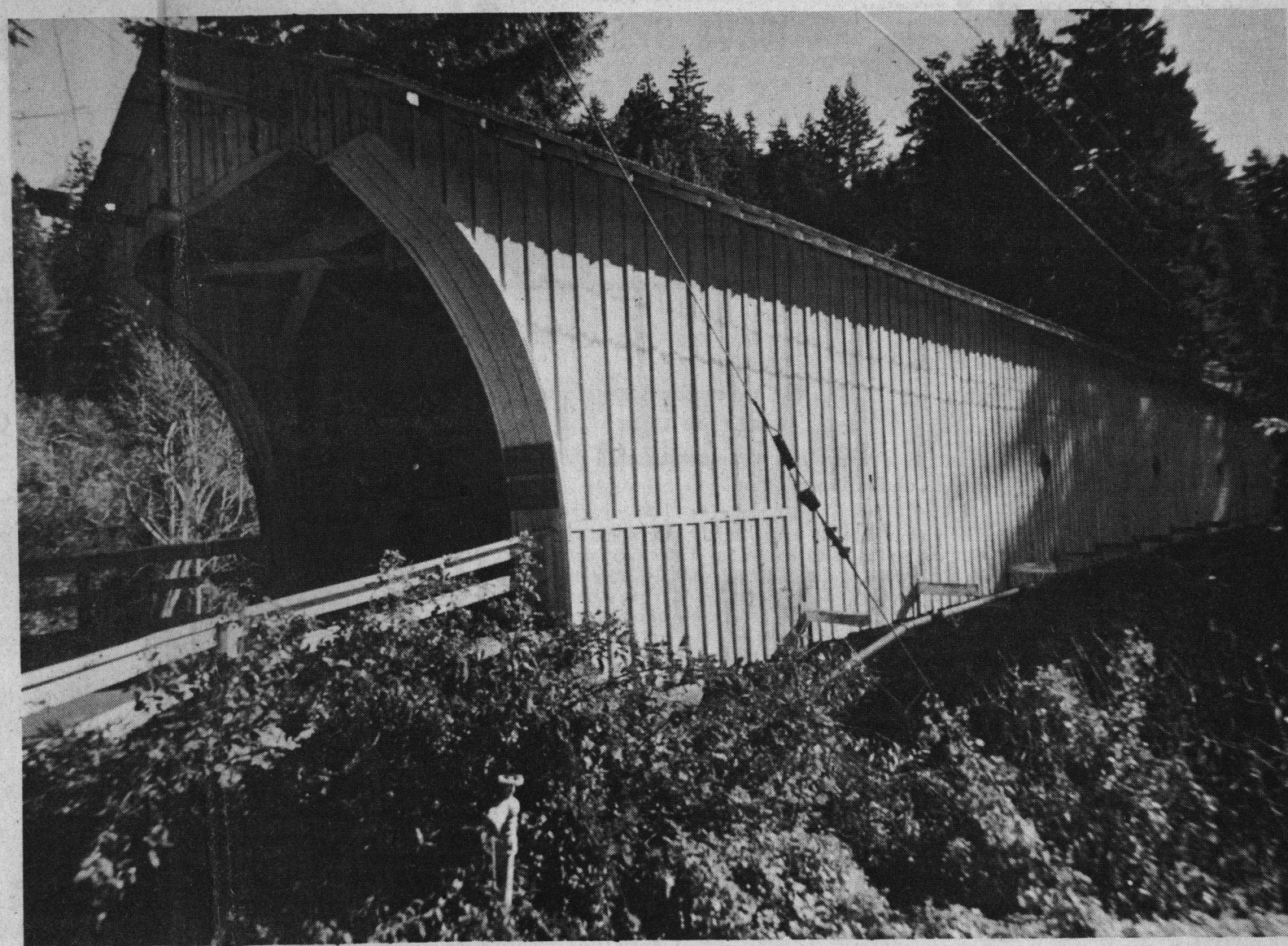
Steel trestle bridge crosses San Lorenzo river near Boardwalk; train is on daily run, returning to Watsonville with freight and sand from Davenport and way points.



Felton bridge, built in 1840s by lumbermen to haul logs over San Lorenzo river, is restricted today to pedestrians.



Surplus metal grids used to turn muddy fields into instant airports during World War II were incorporated ingeniously into Aromas bridge for roadway; bridge handles heavy trucks of nearby Granite Rock quarry.



Covered bridge at Paradise Park near Santa Cruz was built in 1872 by California Powder Works; enclosure kept horses from panicking at heights during crossing.