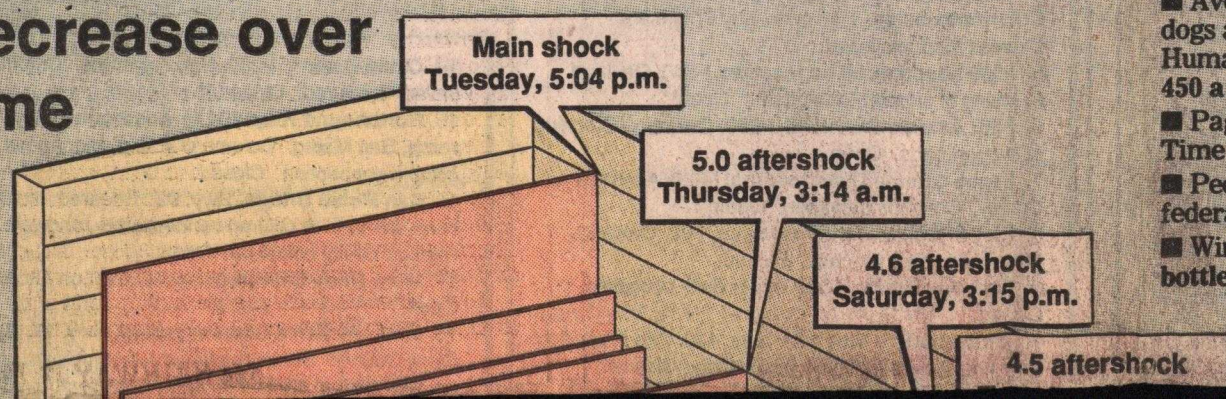


EARTHQUAKE ALMANAC

These figures — many of them estimates — come from public officials, agencies and documents, and from hospitals, emergency officials, scientists, educators, reporters, merchants and victims.

- Richter scale magnitude: 7.1.
- Time: 5:04 p.m. PST.
- Date: Oct. 17, 1989.
- Temperature at San Jose International Airport: 83 degrees.
- Epicenter: 37 degrees, 2 minutes North; 121 degrees, 53 minutes West; 8 miles northeast of Santa Cruz in the Nisene Marks State Park along Aptos Creek; 11.6 miles underground.
- Confirmed deaths: 63.
- Total injuries: 3,286.
- Estimated damage: \$5.6 billion to \$7.1 billion.
- Estimated damage during 1906 quake in current dollars: \$5.8 billion.
- People forced from homes: 13,892.
- Those still displaced as of Friday: 13,312.
- Speed of resulting shock waves: 10,000 mph.
- Energy generated: More than 100 20-kiloton bombs.
- Distance land moved along the surface of the San Andreas fault: 20 inches north/south and 20 inches up/down.
- Seconds it took for the fault to slip: 10.
- Seconds people felt shaking: 15 to 40.
- Total time of shaking, as measured by sensitive seismometers: 6 minutes.
- Biggest aftershock magnitude: 5.2.
- Estimated sway at the peak of the 853-foot-tall Transamerica Pyramid in San Francisco: 2 to 3 feet in either direction.
- Rough estimate of overtime logged by Caltrans workers in first post-quake week: 24,000 hours.

Aftershocks decrease over time

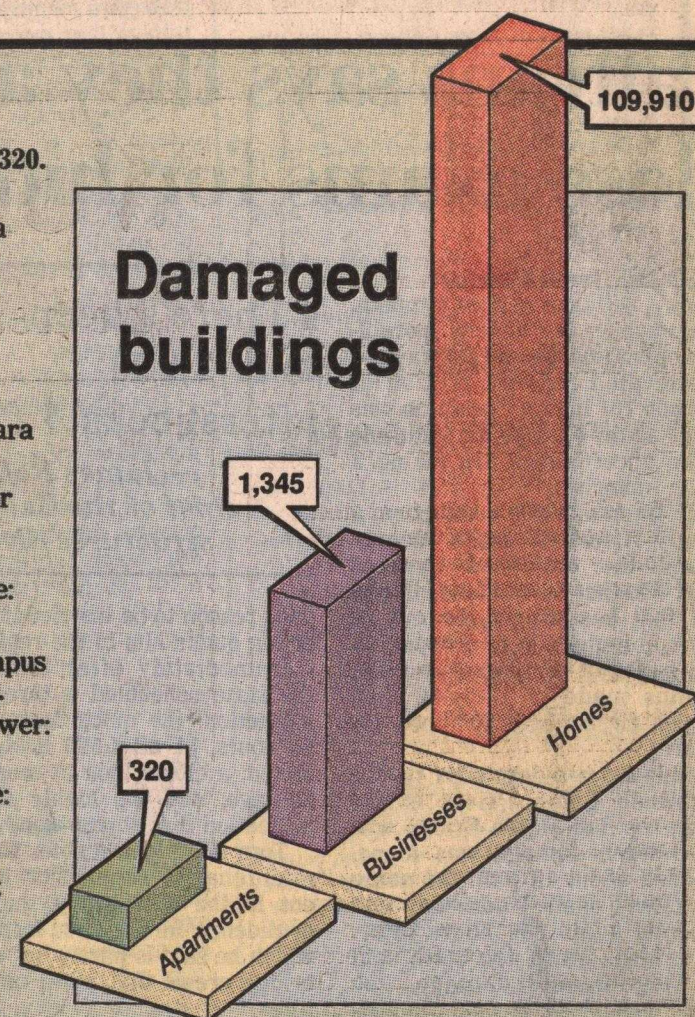


- People treated for earthquake-related stress in one week at Kaiser Permanente hospital in Santa Clara: 120 adults, 30 children.
- Estimated miles of highway shut down: 14.3 miles.
- Weight of a single slab of fallen roadbed on the Cypress Street Viaduct: 600 tons.
- Vegetables lost at the Green Giant frozen vegetable plant in Watsonville: 335,000 pounds of spinach, 65,000 pounds of brussels sprouts, and 54,000 pounds of broccoli.
- Amount of money President Bush sent to San Francisco Mayor Art Agnos with instructions not to tell the media about it: \$1,000.
- Money pledged by Rice-a-Roni to earthquake relief for each run scored in Game 4 of the World Series: \$1,000.
- Earthquake experts fired: 2.
- People sheltered by American Red Cross in first week: 15,884.
- Public schools in five Bay Area counties closed day after quake: 688 out of 973.
- Public-school children, K-12, who got at least one day off from school: 406,400 out of 580,300.
- Emergency field kitchens established in first week: Salvation Army, 13 canteens and 2 stationary sites; Red Cross, 25 mass care feeding vehicles.
- Damage at Sebastian's and Club Jenine on the 17th and 18th floors of the PruneYard Tower in Campbell: 400 glasses, 300 plates, 30 gallons of booze, everything in refrigeration.
- Major TV networks considering earthquake docudramas: 2 (ABC and CBS).
- Quickie photo books in the works: 2.

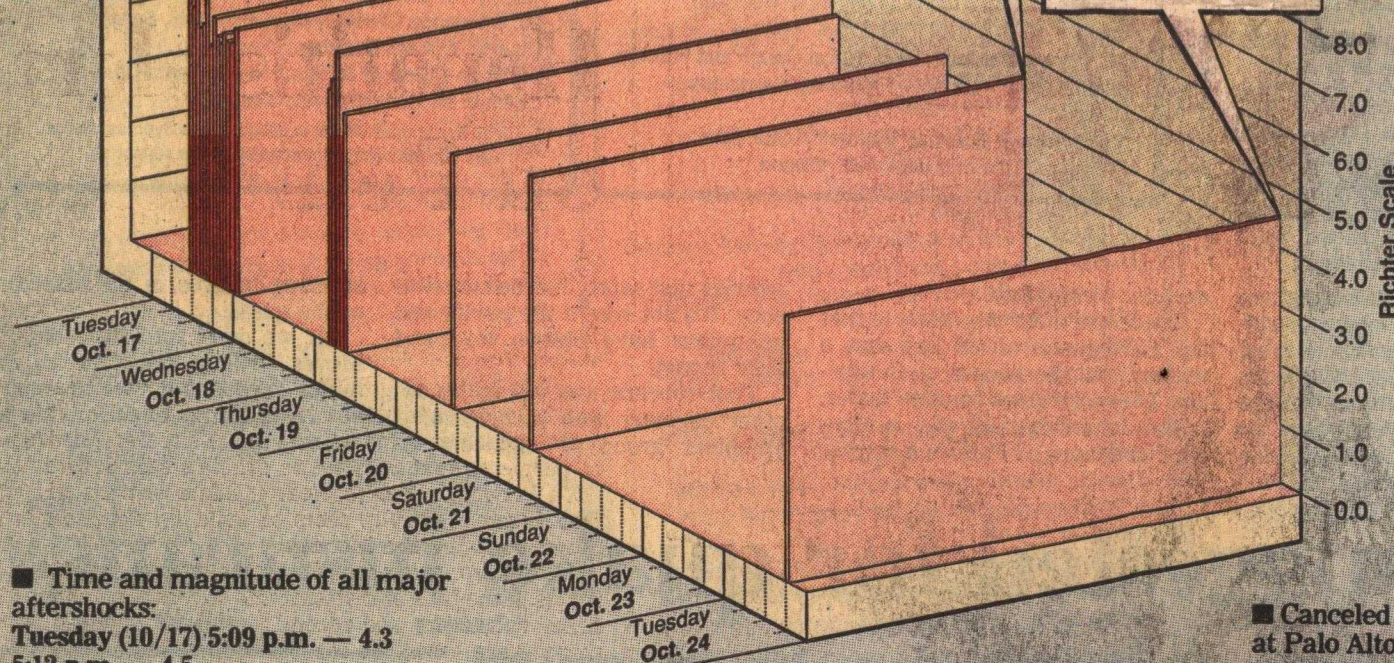
THE QUAKE OF '89

- Homes damaged: 109,910.
- Apartment buildings damaged: 320.
- Businesses damaged: 1,345.
- Homes destroyed in Santa Clara County: 131.

- Businesses destroyed in Santa Clara County: 6.
- Businesses damaged in Santa Clara County: 364.
- Estimate of total damage in Santa Clara County: \$727.7 million.
- Mercury News reporters mobilized for initial earthquake coverage: 64.
- San Francisco Chronicle reporters mobilized for initial earthquake coverage: 40-50.
- Time it took to drive off Stanford campus immediately after the quake: 40 minutes.
- PG&E electric customers who lost power: 1 million.
- PG&E gas customers who lost service: 150,000.
- Combined congressional vote tally — Senate and House — for quake relief bill: 394-108.
- Non-perishable food distributed to 54,000 area residents: 1,123.5 tons.
- Clothing distributed to those residents: 12.5 tons.
- Giants season ticket-holders: 10,000.
- Season tickets turned in after quake: 0.
- Fans who sought refunds for Game 3: 50.
- Stair cases cracked at Candlestick Park: 2.
- Cost of repairs at Candlestick Park: \$100,000.
- Price of an "I Survived the Third Game of the World Series" T-shirt: \$10.
- Average number of calls about runaway dogs and cats to Santa Clara County's Humane Society in the three-day aftermath: 450 a day.
- Pages devoted to earthquake coverage in Time magazine, including its cover: 20.
- People registered for disaster relief using federal disaster hotline in first week: 10,114.
- Wine lost at Mirassou Winery: 46,200 bottles of champagne; 15,000 gallons of wine.
- Age of the cracked Embarcadero Freeway: 30 years.



- Technical balance of San Francisco municipal treasury by the day after the quake: \$0.
- World-wide membership of the Seismological Society of America: 1,700.
- Weight of earthquake-related trash hauled from San Jose residences: 41 tons a day.
- Death toll in world's last 7.1 magnitude quake: 1,300 (Oct. 30, 1983, in Turkey).
- Aftershocks recorded as of Friday: 4,500.
- Perceptible aftershocks, 3.0 or stronger, within a week after the earthquake: 77.
- Number of audience members that sat through '89 quake at San Francisco tourist attraction "San Francisco Experience," which recreates the 1906 earthquake: 26.
- Probability of a 6.0 or greater aftershock in the next two months: 10 percent.
- Probability of a 5.0 or greater aftershock in the next two months: 45 percent.
- Additional 4.0 or greater aftershocks



■ Time and magnitude of all major aftershocks:

Tuesday (10/17) 5:09 p.m. — 4.3
 5:12 p.m. — 4.5
 5:25 p.m. — 4.8
 5:30 p.m. — 4.2
 5:38 p.m. — 4.3
 5:41 p.m. — 5.2
 5:45 p.m. — 4.0
 7:15 p.m. — 4.5
 7:26 p.m. — 4.2
 9:16 p.m. — 4.1
 9:50 p.m. — 4.3
 10:18 p.m. — 4.2
Wednesday (10/18) 3:22 a.m. — 4.5
Thursday (10/19) 1:45 a.m. — 4.3
 2:53 a.m. — 4.5
 3:14 a.m. — 5.0
 5:25 a.m. — 4.0
Friday (10/20) 5:49 p.m. — 4.3
Saturday (10/21) 3:15 p.m. — 4.6
Tuesday (10/24) 6:27 p.m. — 4.5

- Uninterrupted, commercial-free hours of quake news on KCBS radio: 84 hours.
- Time of first Associated Press earthquake bulletin: 5:10 p.m. — from New York.
- Time of first United Press International bulletin: 5:15 p.m. — from Washington.
- Days of disrupted cable car service in San Francisco: two.
- Last pre-quake birth near the epicenter: 5:03 p.m. — Elizabeth Patrice Cupples, to Marilyn and Jim Cupples of Santa Cruz, by Caesarean section at Community Hospital in Santa Cruz.
- First post-quake birth near the epicenter: — Derek John Warner, to Kathleen and Ed Warner of San Jose, at 7:24 p.m. at Community Hospital and Rehabilitation Center of Los Gatos.
- Estimated daily trips diverted around the Bay Bridge: 240,000.
- Estimated distance quake pushed eastern-most mile of Bay Bridge toward Oakland: 7 inches.
- TV networks that remained on the air from Candlestick during the quake: 1 (ESPN).

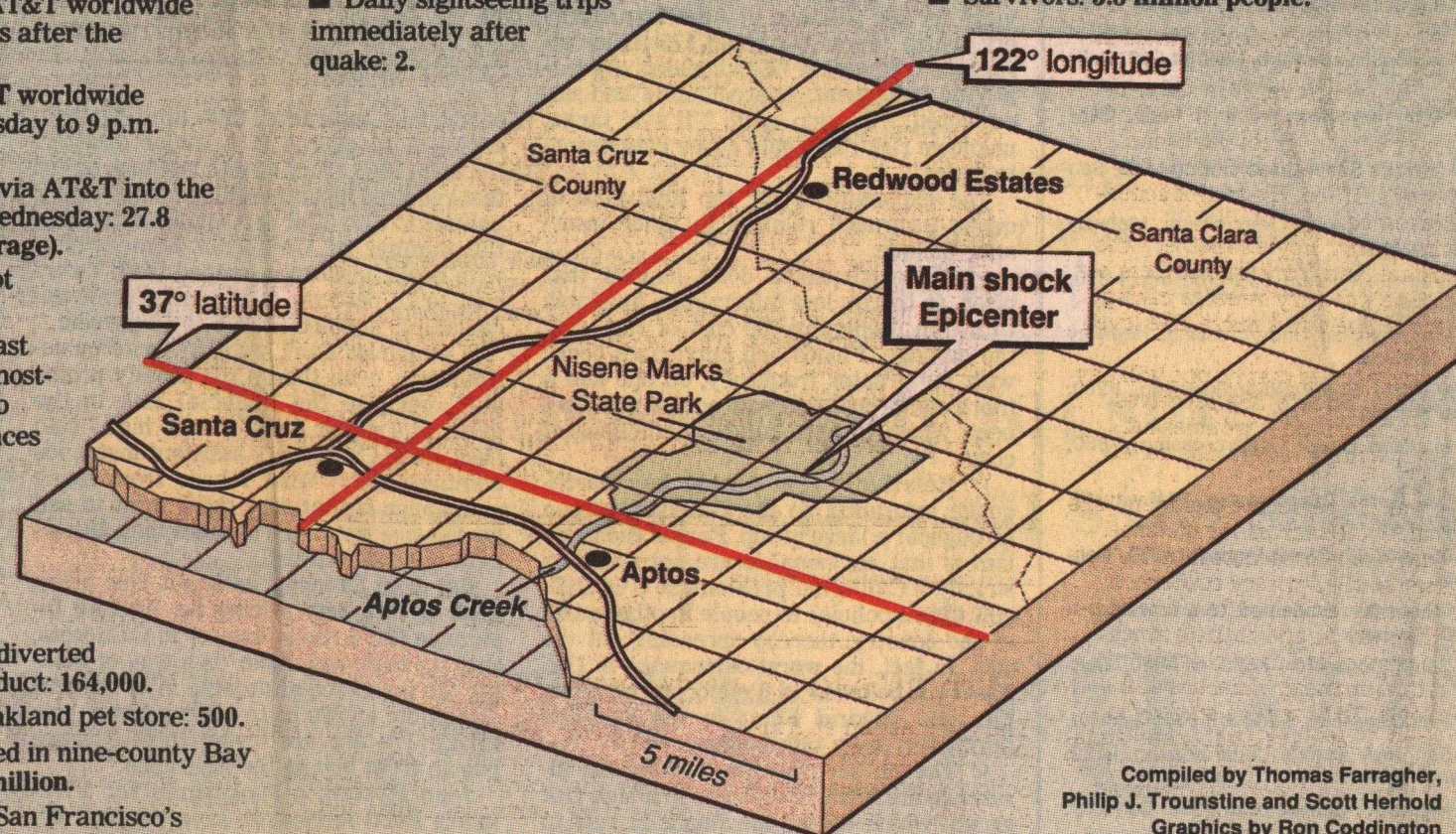
- State agency workers mobilized during first week: 6,132.
- Caltrans workers assigned to earthquake detail: 1,500.
- Telephone calls to the Northern California Psychiatric Society's crisis counseling hot line Oct. 19-27: 360.
- Days from quake FEMA allows for filing a claim: 60.
- Disaster application centers opened in first week: 12.
- Phone calls made on AT&T worldwide network in first four hours after the earthquake: 23 million.
- Phone calls over AT&T worldwide network from 9 p.m. Tuesday to 9 p.m. Wednesday: 44.5 million.
- Phone calls attempted via AT&T into the 408 and 415 area codes Wednesday: 27.8 million (3.5 million is average).
- Attempted calls that got through: 9.5 million
- San Francisco's rank last week among America's most-livable cities, according to the 1989 edition of the Places Rated Almanac: 2nd.
- Oakland's rank: 19th.
- San Jose's rank: 25th.
- Santa Cruz's rank: 93rd.
- Estimated daily trips diverted from Cypress Street Viaduct: 164,000.
- Snakes freed in one Oakland pet store: 500.
- Local phone calls placed in nine-county Bay Area on Wednesday: 80 million.
- Reported decrease in San Francisco's crime-reported rate in 56-hour aftermath: 25 percent.

walking tour of the devastated Pacific Garden Mall in Santa Cruz: 15 minutes.

- Day-after sales total by midday at one San Jose hardware store: \$48,000, including 856 gallons of water, 3,000 batteries, and 800 flashlights.
- Replacement glass unloaded by area's largest glass distributor daily for a week after the quake: 325,000 pounds.
- Twelve-ounce cans of drinking water canned for victims by Budweiser: 1.2 million.

- Canceled tee-times the day after the quake at Palo Alto Hills Country Club: 45 out of 100.
- Total sought in lawsuit filed Friday on behalf of 10 victims of the collapse of I-880: \$22 million.
- Meals served by Salvation Army in seven days following quake: 15,117.
- Meals delivered by Salvation Army in that time: 22,740.
- Estimated percentage of California homeowners carrying earthquake insurance: 20 percent.
- Time it took for last major network to provide continuous coverage: 1 hour, 39 minutes (NBC).
- Daily sightseeing trips immediately after quake: 2.

- Length of the Bay Bridge: 8.4 miles
- Size of chunk of the Bay Bridge that collapsed, causing its closure: 50 feet long, 76 feet wide; 250 tons.
- Miles of gas lines to be repaired in San Francisco's Marina District: 10.
- Babies born at San Francisco International Airport in the immediate quake aftermath: 2.
- Daily bay sightseeing trips typically made by Blue & Gold Fleet sightseeing boats immediately before quake: 9.
- Occupancy rate at 580-room San Francisco Holiday Inn before the quake: Nearly 100 percent.
- Occupancy rate there after the quake: 25 percent.
- Estimated decline in business at San Francisco's Fisherman's Wharf one week after: 50-85 percent.
- Stretch of Northern California's coastline said to have been turned into a danger zone by earthquake: 100 miles.
- Average daily loss during post-earthquake toll-free days on Golden Gate Bridge: \$107,300.
- Coffee donated to earthquake victims by Costa Rica: 2,600 pounds.
- Amount pledged by Major League baseball's 26 teams: \$1.4 million.
- Amount donated to San Jose Mayor Tom McEnery's relief fund in the nine days after the quake: \$227,000.
- Largest overseas contribution: \$7 million, Japan.
- Survivors: 5.8 million people.



Compiled by Thomas Farragher,
 Philip J. Trounstone and Scott Herhold
 Graphics by Ron Coddington