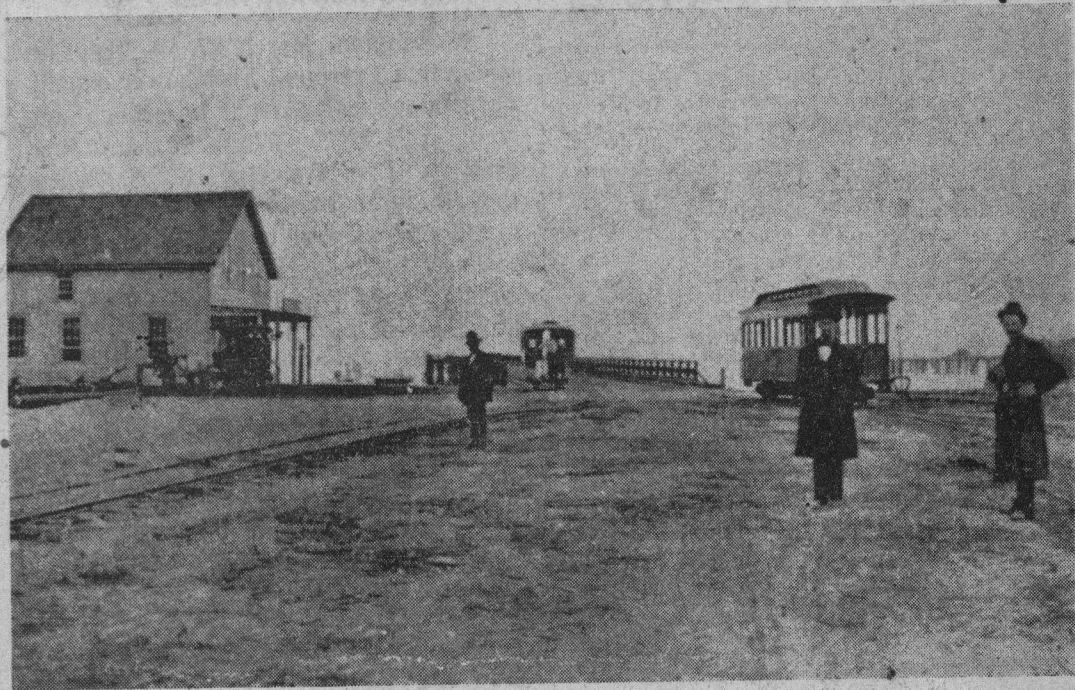


Santa Cruz Yesterdays



NEAR THE R.R. WHARF IN DAYS LONG GONE

(From the Preston Sawyer Collection)

Out of the dimming pages of the past a rare old photo is here placed before the eyes of the present. Three quarters of a century have flown since the time depicted.

The view shows what is today the foot of Pacific avenue where it joins Beach street. But times have indeed changed! And so has the scene, where in a few more months a super-new look will take over, with the long hoped for completion of the direct route between this point and the West Cliff Drive.

Narrow Gauge Terminus

Behind the two bystanders at the right is an idle passenger car of the South Pacific Coast narrow gauge railroad. The "Jim Fair" line, building south from Alameda, via west bay points to Los Gatos, thence by Herculean effort through the Santa Cruz mountains to a juncture near Big Trees with the earlier Santa Cruz & Felton line, which it absorbed, had finally arrived at this coastal terminus.

Just out of the picture, to the right, and also back to the north

were depot buildings. The larger ones, along the Blackburn Terrace bluffs were freight sheds and warehouses.

The old railroad wharf itself, built in the middle '50s, then belonged to the railroad, having been purchased earlier from its builder, David Gharkey. Landward end of the wharf is in the middle background.

Equine Versus Steam

That's a horsecar back by the pier, which has just rounded the corner from the "Esplanade" (now Beach street), enroute to town from the beach and bath houses. Its route will take it by the "tallest building in Santa Cruz", 5-story Centennial Flour Mill, built in 1876 and named for the nation's centennial of that year. This stood almost against Beach Hill at the edge of Blackburn property on what is today lower Pacific avenue.

On the extreme left is the original version of today's Trovatore hotel-restaurant. The corner has been occupied for many years un-

der a succession of names — each with additions and improvements — from Kerny House to Sea Foam to St. James, and the present.

In the right background beyond the railroad car the pioneer Cowell wharf slants down from the Bay street bluffs.

Today the same camera angle presents a much busier scene, with the enlarged, modernized Trovatore; and the municipal wharf approach, to the left of the old wharf (dismantled in 1922). In the latter spot are business buildings and parking areas, and the Southern Pacific crossing.

(Foot note: That others may know how the oldtime pix are sometimes ferreted out — The foregoing started as a small picture found in an old San Francisco photo lab. Unidentified as to subject, there was only the assurance it was of "Santa Cruz." Oldtimers here were stumped, until it was discovered that the print was in reverse! Corrected, it did not take long to identify the location.)