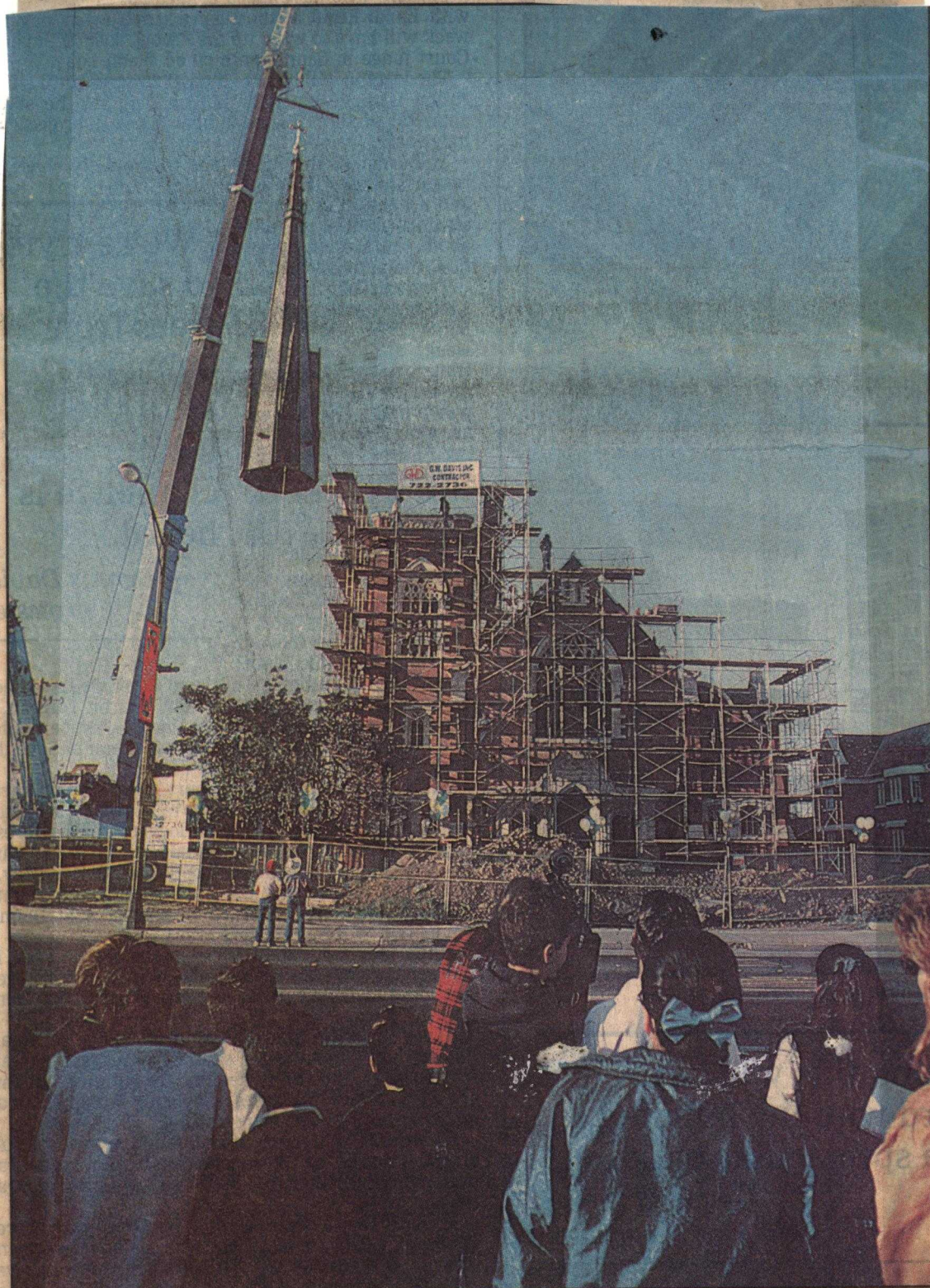


# Eight tons of faith restored



Watsonville citizens watch as the steeple is moved into place Thursday morning.



# St. Patrick's steeple returns

WATSONVILLE

**T**HE LANDMARK STEEPLE at St. Patrick's Roman Catholic Church returned to its post atop the church tower Thursday morning.

More than 300 people watched as two cranes eased the steeple into place around 7:30 a.m.

The 70-foot, eight-ton steeple symbolized efforts to rebuild the city after the 1989 Loma Prieta earthquake. The church suffered heavy damage in the earthquake and was torn down. Rebuilding began in March. Church leaders hope to hold the first Mass in the rebuilt church on March 17, 1994.

The 4,000-member St. Patrick's parish is \$1.2 million short of the \$3.8 million it needs to pay for the rebuilding, said Rev. Mike Miller. Funds have come from community donations, private businesses, the National Catholic Relief Fund and hundreds of small Roman Catholic parishes across the country.

**Photos by  
Bill Lovejoy/Sentinel**



Kids take  
some  
time  
away  
from  
school to  
watch  
the  
festivities.