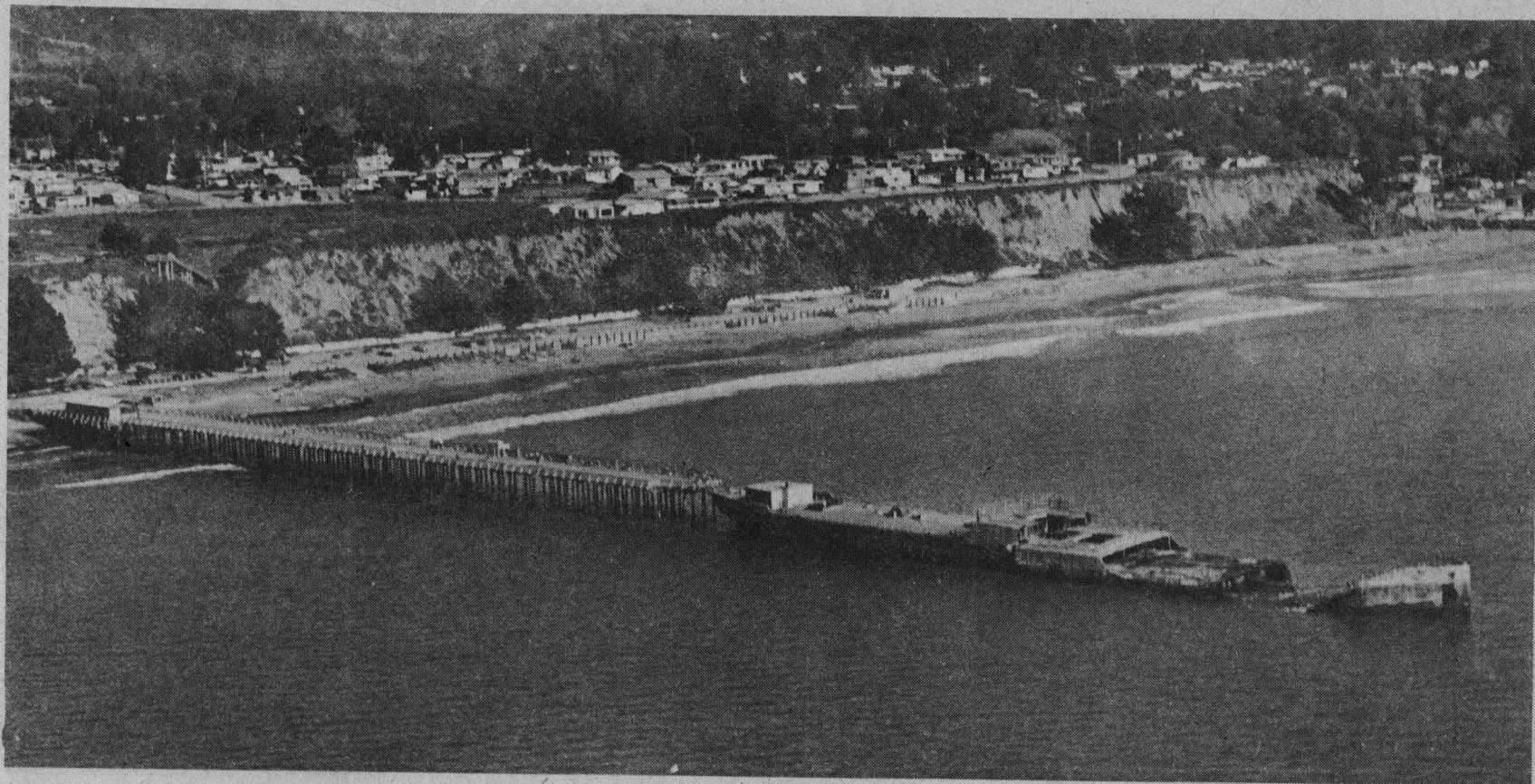


Cement Ship



Cement ship at Seacliff Beach remains closed to public.

—Photo by Sam Vestal

2/2/78

If sea stays quiet, high tide won't hurt

It won't have quite the impact of the ones that rolled in on the Santa Cruz County coastline in early January, but you can expect some abnormally high tides this weekend in the Monterey Bay area.

Tides have been in the five-foot-plus range all week, but Sunday, 7:53 a.m., will be the first six-foot tide since Jan. 10.

And at 8:48 a.m. Monday, the tide will crest at 6.1 feet. That will be the high water mark for the

area until June 22.

Property owners along the central county coastline are now taking a wait-and-see attitude. Homeowners, especially in the Seacliff and Potbelly Beach areas, suffered thousands of dollars in damages last month when high tide and heavy surf combined to pound the beaches and their homes, undermining many of the foundations.

Giant boulders — rip-rap — have been hauled in by construc-

tion crews in an attempt to stop further damage from occurring.

But the odds for further damage are problematical at this point.

"There should be no big problem," said Tanner Wilson, a Potbelly Beach homeowner, "unless there is another big storm. The problems before came from the

combination of the wind and high seas."

Further south, state park officials are watching the old "Palo Alto" — the famed "cement ship" — and won't make a final decision on reopening the popular fishing spot to the public until after Monday's high tide.

The ship sustained a new crack during the January storms when waves scoured out tons of sand

from under the hull, allowing it to settle more than two feet.

Chief park ranger Larry Cermak said last week that he expects further damage to the seawalls protecting the parking and camping areas in Seacliff state beach.

Germak also indicated that it would be possible that heavy surf would wash away unprotected parking north of Aptos creek.

Singers present

religious music