



HISTORIC HOUSES - Central
Victorian cottage at 133 Towne Terrace, S.C.

Craftsman, Victorian homes will be toured

7-26-90

SATURDAY'S tour of historic homes, a benefit for the Santa Cruz County Historical Trust, has a dual personality. Participants will visit decorative Victorians and handsomely plain Craftsman-style homes.

"The Craftsman was a reaction to Victorian ornament," explained Cynthia Mathews of the Historical Trust. "Craftsman uses natural wood and simple lines. The two Craftsman houses on the tour have beautiful, natural wood paneling. The Craftsman is a much simpler feeling than the Victorian; it is very restrained."

Victorians, like the homes at 512 Walnut Avenue and 133 Towne Terrace, were built beginning in the 1890s. The two are constructed in the stick-Eastlake style with bay windows, brackets and gingerbread trim.

Victorian-era homes, Mathews noted, ranged in size and grandeur just like homes of today. The rich built the huge, elaborate Victorians that still bring top dollar. The Victorian belonging to Hulda McClean on Walnut Street is medium-sized, perhaps originally belonging to a middle-class family. The cottage at Towne Terrace, home of Ken Wing and Hollis deLancey, probably belonged originally to a working class family.

Please see TOUR — D4

D-4—Thursday, July 26, 1990 — Santa Cruz Sentinel

Tour

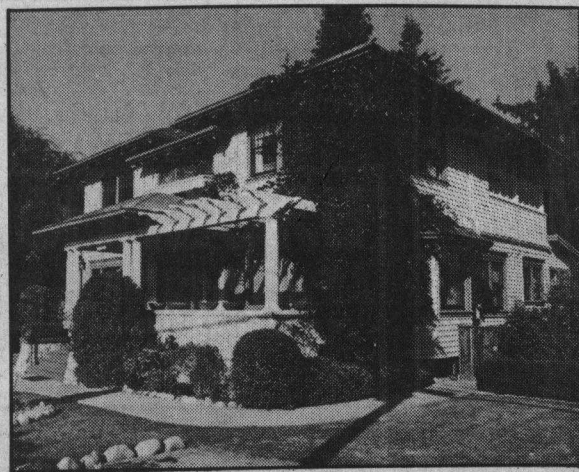
Continued from Page D1

According to Brooke Towne, a member of the historic Towne family of Santa Cruz, her grandfather William Towne was born in the home. The family of farmers, she related, eventually moved to Salinas. The Townes sold the home to the Newman family, who sold it to Michael Zelter and Ann Wasserman in 1979. It was sold this year to the fourth owners, Hollis deLancey and Ken Wing. Between 1905 and 1915, the simpler Craftsman style was in vogue. At that time homes like the two on the tour, 709 Mission St. and 504 California St., were constructed.

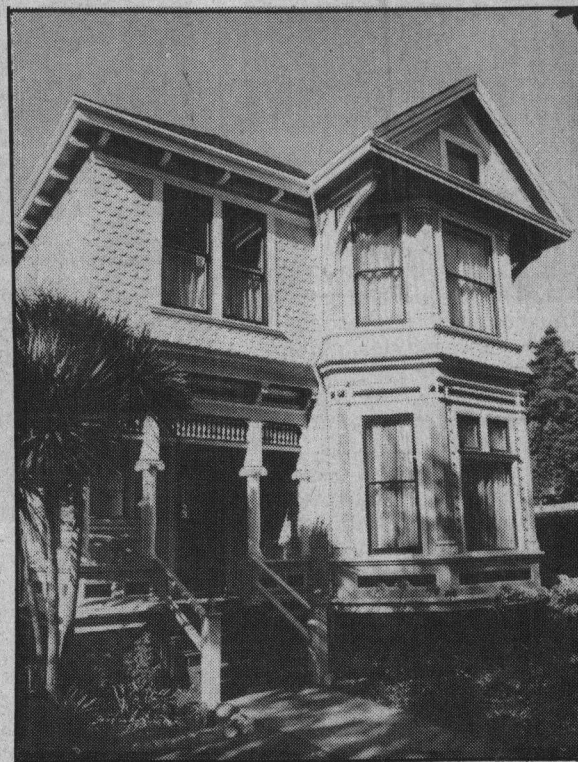
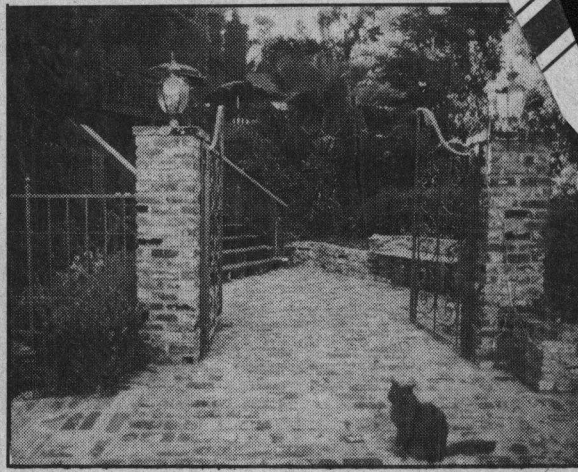
The Mission Street Craftsman has been converted into law offices, but it still retains its Colonial Revival form and Craftsman materials with original wallpaper and details intact. The spacious Craftsman home on California Street owned by Marsha Shanle has large, multi-paned windows looking out over Santa Cruz, natural wood paneling and deep coffered ceilings.

To add some variety and interest to the tour, the Historical Trust has included a site that was an Ohlone Indian encampment, a Mission-era mill and Kirby's tannery. What is left of historical nature at 1025 Laurel St. is a 1909 log cabin. Today, we know it as the site of the Babbling Brook Inn.

Tickets, which include refreshments, are \$15. They are available in advance at the Octagon Museum, 118 Cooper St., or the day of the tour at any of the homes. For more information, call 425-3499.



Dan Coyro/Sentinel



Homes on the Historic Home tour are, clockwise from upper left, Craftsman at 709 Mission St., 1909 log cabin at Babbling Brook Inn at 1025 Laurel St., Craftsman at 504 California St., and Victorian at 512 Walnut St.