

Beach visitors to get 220-space parking lot

Capitola 2000
Opening slated for end of April, but Esplanade intersection update on hold

By Jondi Gumz

jgumz@santacruzsentinel.com
@jondigumz on Twitter

CAPITOLA » Alyce Richardson, proprietor at She Sells Seashells and More, is looking forward to more parking for Capitola Village.

She welcomes changes at the Stockton Avenue intersection with the Esplanade, by Margaritaville, to make crossing the street safer.

The parking lot, with 220 spaces,

is slated to open at the end of April but the intersection project is being put off until the fall.

Beach-goers visiting Capitola for the first time will be able to access the new lot from two entrances, one at 426 Capitola Ave. behind City Hall and one past Gayle's Bakery at the intersection of Bay and Monterey avenues.

There will be a free shuttle service from the lot to the beach on weekends and holidays, from Memorial Day through the Capitola Art & Wine Festival in September.

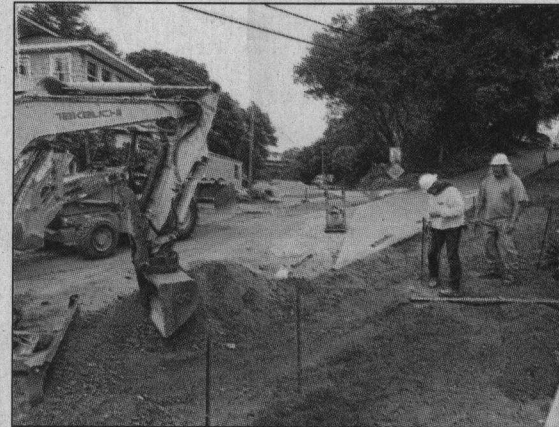
Visitors can look for signs saying Beach and Village Parking Lots 1 & 2. Parking will cost 50 cents per hour.

Restroom remodel bids came in double the budget and undergrounding utilities for \$30,000 was dropped due to cost.

The new parking lot, previously home to Pacific Cove mobile home park, is temporary and destined to become a city park.

The City Council expects the temporary use may last up to five

PARKING LOT » PAGE 3



Construction crews work near the entrance to the new parking lot on the site of the former Pacific Cove Mobile Home Park in Capitola Village.

DAN COYRO —
SANTA CRUZ
SENTINEL

Parking lot

FROM PAGE 1

years until a parking garage can be developed on the upper lot.

The \$100,000 Esplanade intersection project is on hold after the city was told by Coastal Commission staff that a coastal development permit is needed, which would delay the work until the busy summer tourist season.

"Rather than fight with the coastal commission we would go through the permit process," Public Works Director Steve Jesberg told the City Council on Thursday night.

"It's been this way for a long time, we can live with it for a while longer," said City

Manager Jamie Goldstein.

Questions arose about the island installation to slow traffic and which of two crosswalks to eliminate.

Councilman Michael Termini had doubts about emergency vehicles such as fire engines getting over the island, echoing concerns of John Martorella, who is on the city Traffic and Parking commission.

Martorella recommended keeping the crosswalk by Village Creamery and eliminating the crosswalk by Stockton Bridge Grill, the reverse of what Jesberg recommended.

Additional sidewalk replacement in the village will be postponed until fall, giving property owners time to participate. A section in front of Paradise Beach Grill got noticeable wider side-

walks in March.

"It's better we delay this project and do it right," said Councilman Ed Bortoff.

Thanking someone?

@
**Crow's
NEST**

Crow's Nest Beach Market

**Our Gift Cards
are always
well-received.**

(831) 476-4560

www.crowsnest-santacruz.com
ON THE BEACH AT THE SANTA CRUZ HARBOR