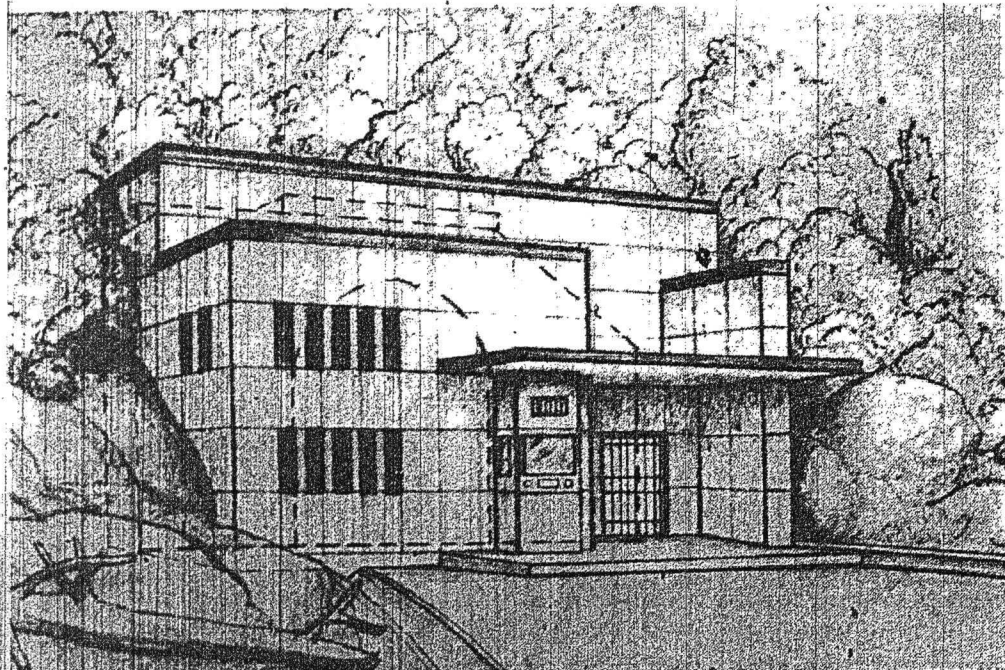


Abandoned Tunnel At Felton To Be Used As Atomic Vault

Architect's Sketch Of Tunnel Entrance



Architect's sketch of one of the massive entrance structures to the tunnel-vault to be constructed in the Santa Cruz mountains for storage of valuables against

loss or damage in atomic or natural disasters.

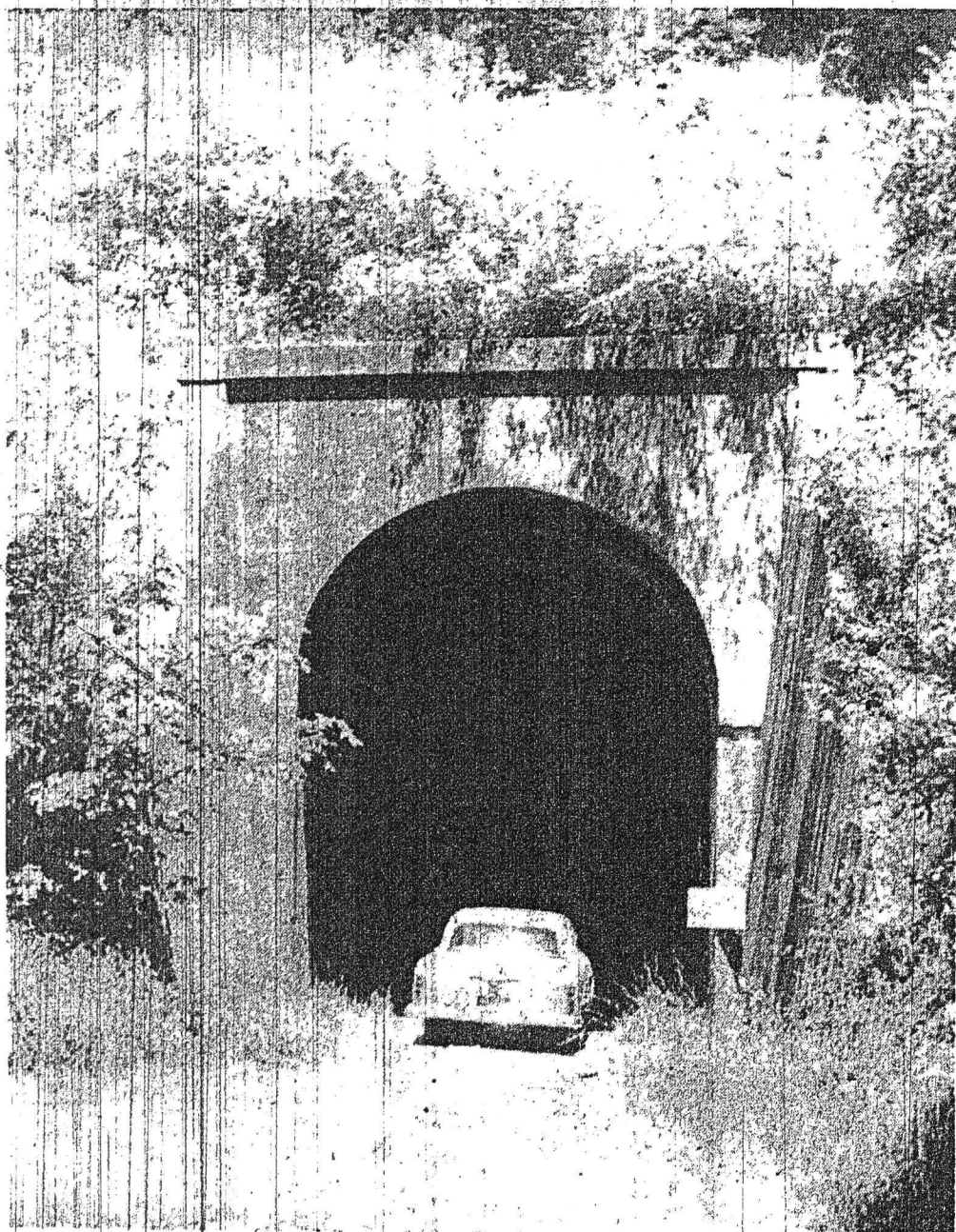
The completed storage space in the 240-foot, 25-foot high, tunnel will be completely air conditioned and facilities will be in-

cluded for microfilming of records. Storage will be similar to that in bank vaults, with large units for business records and safety deposit boxes for individuals.

Company Officials Inspect Plans



Entrance To Historic Tunnel



Entrance to the 240-foot tunnel at Zayante creek near Felton, which has been purchased by the Western States Atomic Vault corporation of San Francisco for eventual use as a subterranean vault to preserve documents and

other valuables with complete security from any disaster.

This tunnel was one of several in the Santa Cruz mountains through which for years passed trainloads of Bay area vacation-

ists enroute to and from the Santa Cruz beaches. This same line, now abandoned, transported much of the timber used in the rebuilding of San Francisco after the 1906 fire and earthquake.

A railroad tunnel near Felton on the abandoned Southern Pacific right-of-way between Los Gatos and Santa Cruz is planned for conversion by the Western States Atomic Vaults corporation into a storage vault that will be secure from atomic bomb attack or any other major disaster. Similar to storage units on the eastern seaboard in abandoned mines or other ready-made lo-

cations, this will be the first such major underground stronghold on the West Coast.

Shown here is Palmer Bescherer (left), president of the company and an architect and bank vault engineer of long experience, who is looking over plans for the vault with Jules Charbonneau, chairman of the board. Actual construction by the San Francisco firm is expected to start in May.