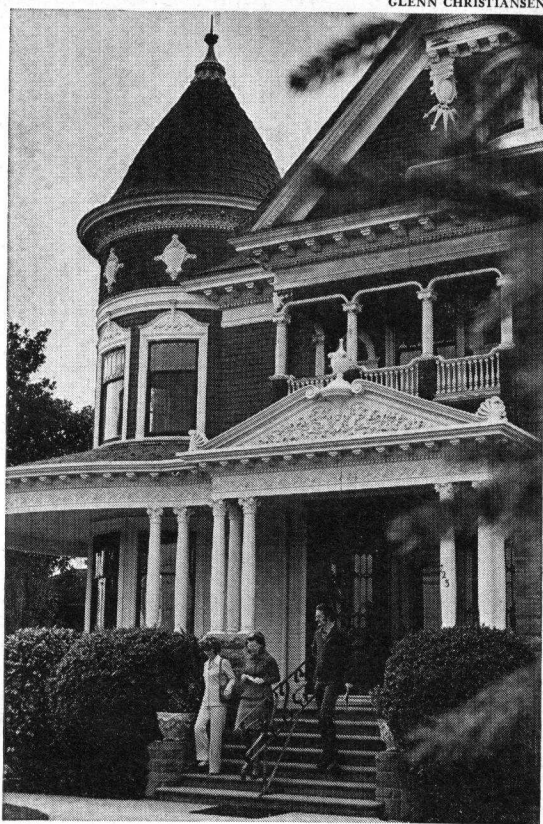
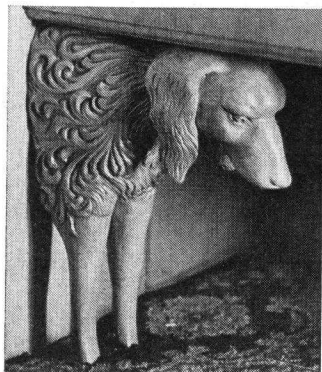




Stone gargoyle spouts water when it rains; polished hardwood dog supports bench at entry



Landmark home on East Lake, Tuttle mansion was built in 1899 for early orchardist, recently became real estate offices. It's open for visiting most days

On your own or on tour... eminent Victorians of Watsonville

The stately homes of Watsonville hark to the late 1800s, when the city, like Monterey and Santa Cruz on either side, was a center of wealth and industry.

Many of the Victorians are downtown along East Lake Avenue, Beach Street, and Maple Avenue; they're easily seen in a half-hour's leisurely walk. Others are a longer walk or short drive away.

In the Pajaro Valley Historical Association museum office at 261 East Beach, you can pick up a free map that shows many of the old-timers, and buy a \$2 booklet that details 14. Office hours are 10 A.M. to noon every weekday, 2 to 4 P.M. on Wednesday, Saturday, Sunday. The Chamber of Commerce, 444 Main, and the Watsonville Library, 310 Union, also have these publications.

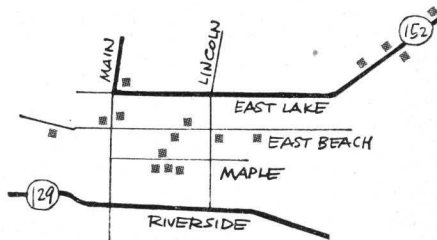
The sketch at right shows where some of the old buildings are; others await discovery on back roads and side streets. Three of the most interesting:

Tuttle house, 723 East Lake (pictured above). Built in 1899 for rancher Morris Tuttle, it now houses business offices. You can tour during business hours.

Julius Lee house, 128 East Beach. Distinctive Queen Anne home with impressive single turret. Also note the Fletcher house at 124, the Van Doren/Rodgers/Daly house at 134.

Henry Wiley house, 143 West Beach. Two-story home, built in 1892, has odd combination of turrets, porticoes, bay windows, balconies.

The American Association of University Women will conduct a Victorian House Tour in Watsonville on Saturday, April 19; four homes will be visited, plus the historical museum. Cost is \$3.25; for details, write to the museum at 261 East Beach St., Watsonville 95076. □



Gray squares locate some houses and groups of houses; as you walk or drive the streets you'll see more