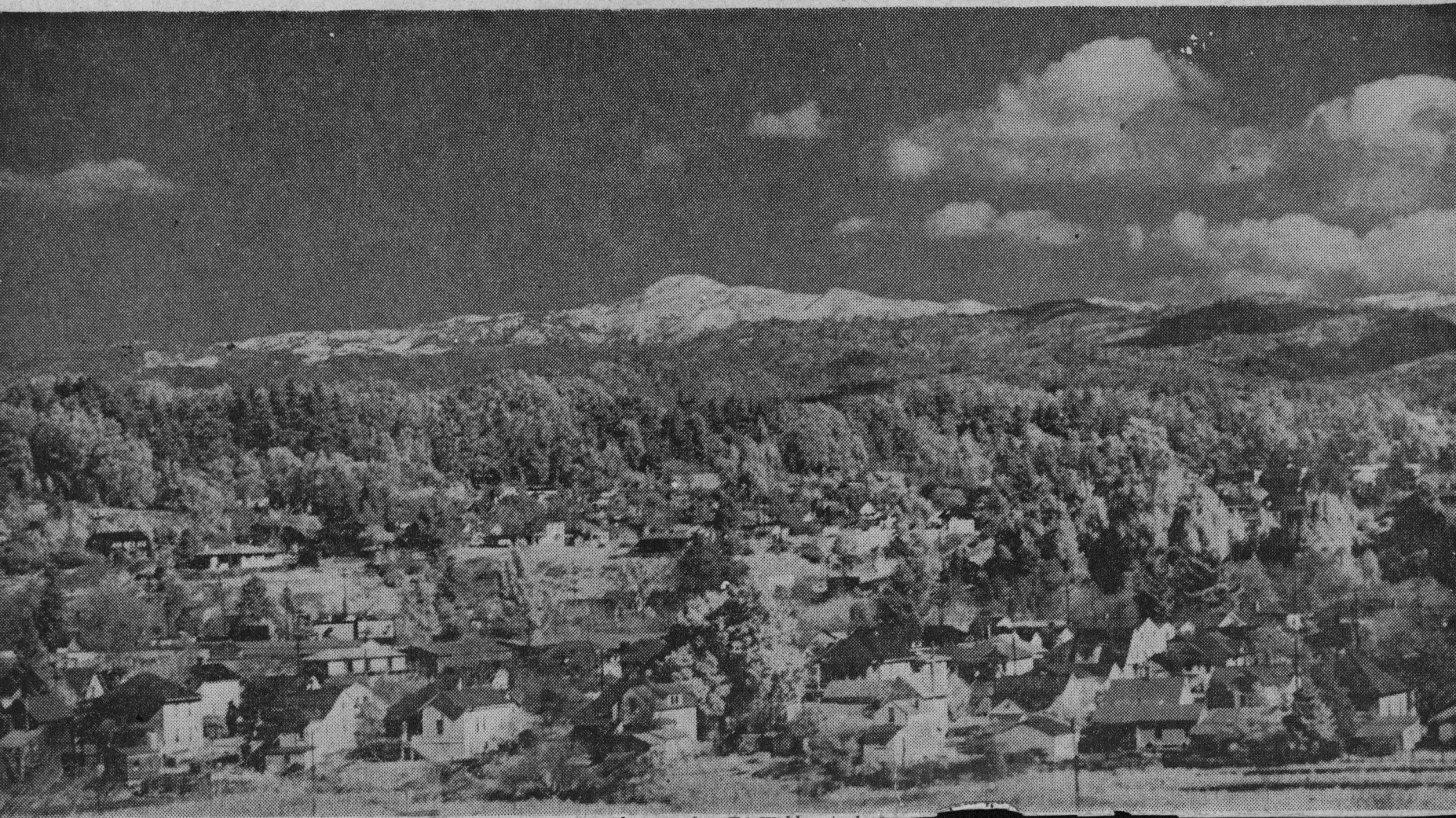


# Snow Caps Beautiful Loma Prieta

1948



Photographer Ed Webber took this shot from the roof of the Palomar hotel. This photo was taken at noon with infra-red film, similar to that used by the armed forces during the war, as it cuts through haze. The camera was the regular news photography "Speed Graphic." As can be seen from this spot, the entire range is snow covered — a contrast to most years when only the top of the Loma Prieta peak at the ranger lookout has snow.