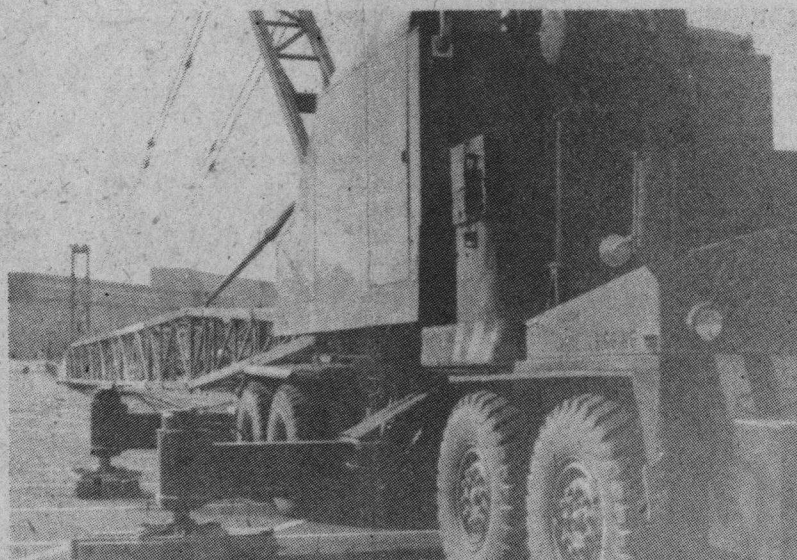




INSIDE FLOORS — The concrete slab floors have been completed for several of Capitola Mall's stores, but many more are still needed to be done to meet the April 14 grand opening date.
Photos by Keith Muraoka.



GIANT CRANE — Much of the work on the new mall has shifted indoors, but this giant crane recently showed up at the construction site parking lot. It stretches the length of the lot and will handle much of the lighting work.

Capitola Mall- 'a long way still to go, baby'

There are no cigarette or tobacco stores scheduled to open in the new Capitola Mall, but as one workman put it, "we've come a long way, baby, but we have even further to go."

Sutter Hill, the Palo Alto firm which is constructing the 300,000 square feet mall on 41st Avenue, has set a gala grand opening for April 14.

INTERIOR WORK

The exterior of the football field long mall looks more like a shopping center and less like a construction site as the days go by, but the interior still has a ways to go.

The interior mall terrazo floors, made up of a mosaic construction composed of chips of broken stone, are currently being poured.

Skip loaders are dumping huge am-

ounts of base rock for the concrete slab of stores, while others are leveling the floors and washing off finished products.

CONCRETE SLABS

The concrete slabs and plumbing for Kenney Shoes, Zales Jewelers and Topps and Trowers have already been completed. Work is set to begin soon on the spaces for B. Dalton Bookstore, Foxmoor Casuals, Radio Shack, Thom McAn and Toy World.

High above, a lone worker has set his sites on tackling the lighting situation, while in the center, the wooden forms for the mall's center piece fountain are being nailed into place.

BIG STORES

Mervyn's Department Store and Sears, which has been in operation for several years, are the mall's two big stores. Mervyn's is scheduled to open earlier - on March 3.

The April 14 grand opening will include an antique car parade and show, the Popcorn Theater Marionettes and a boat display presented by Helmsman Yacht Center of Santa Cruz.

By the scheduled opening date about 70,000 square feet of the available shopping space will be completed. James Foug and Associates, project architects for the mall, have indicated that plans for the remaining tenant stores would be approved within 30 days.



County News

VOLUME 2 NUMBER 20

SANTA CRUZ, CALIFORNIA

FEBRUARY 10, 1977