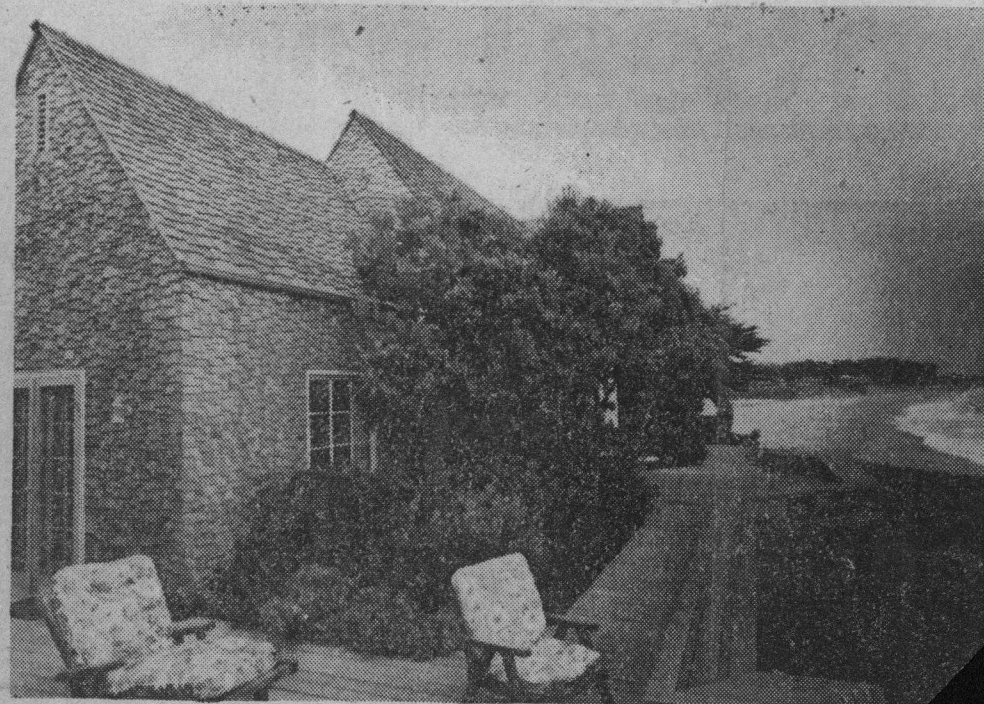


# YWCA's Historic Homes Tour Is Saturday



Shingled English manor house beachside on Sunny Cove, left, is among the homes on the Y tour Saturday.

Among homes featured in next Saturday's YWCA Historic Homes Tour, in conjunction with the annual Y Antiques Show-Sale at Civic Auditorium, will be the two-story English Manor home of Donald and Winifred Geesey.

Referred to as the Van Antwerp house by its original owners, the beachside home on Sunny Cove was designed by Clarence Tantau, San Francisco architect who also designed the old Del Monte Hotel and the Monterey Peninsula Country Clubhouse. The home was built in 1928.

Both Win and Donald, formerly of Woods-ide, note that they had admired the house for many years. "A blanket of ivy covered it when we first noticed it," says Win. "Then when Georges and Dawn McCormick owned the home they removed the ivy to reveal the redwood shingles."

The shingling is an outstanding exterior feature of the home, covering the structure from roof top to foundation. Win and Don were able to leave the original redwood shingles on the protected courtyard but had to replace the shingles with cedar ones on the other walls. "We had a difficult time finding a craftsman who'd work with the random shingle style," notes Win.

The house is designed to give its owners a spectacular view of the bay from every window, except those facing the courtyard which offers welcome shelter on windy days.

A redwood deck, weathered like the house, fronts the house on the bay side.

The interior features lavish use of redwood, a cathedral style ceiling in the living room, hardwood flooring, antique

furnishings and a poured-form concrete fireplace with shield design.

The fireplace still has holes from bullets shot by a reclusive Van Antwerp who was illustrating to a neighbor what he would do if he found trespassers on his property.

Other than the shingling and some minor refinishing of interior wood, the Geeseys haven't changed the home. The kitchen had already been remodeled, utilizing many of the original cabinets.

There is a beamed ceiling in the dining room, comfortable spacious bedrooms, each with a view, and an entry hall featuring a massive grandfather clock built by Win's great-grandfather.

The Geeseys say they love both their new home and Santa Cruz. Win retired from 10 years as a special education teacher and she now enjoys visits from grown children and a number of hobbies including weaving on the loom which tour-goers will see.

Don switched careers when they moved to Santa Cruz, from practicing attorney to real estate. He now "commutes" two blocks from their home to his office on Portola.

The July 14 Historic Homes Tour is a part of the Y's 31st Annual Antiques Show to be Friday through Sunday at Civic Auditorium. Homes tour and show-sale donation is \$5 with \$1.50 for the show-sale only. Advance tickets for both events are on sale at the Y, Walnut at Chestnut, or may be purchased at any of the four homes on the tour, or at the auditorium during the show-sale.

Other tour homes include the near-100-year-old Scott home on South Branciforte, the hexagonal house owned by Ed and Vera Haskins on Sycamore and the Hihn House on Walnut owned by John and Pat Sherwood.



Winifred and Donald Geesey in living room of their home which features a cathedral style ceiling, redwood trim and unusual doorway into the dining room. Above left, the couple in courtyard with its welcome shelter on windy days.