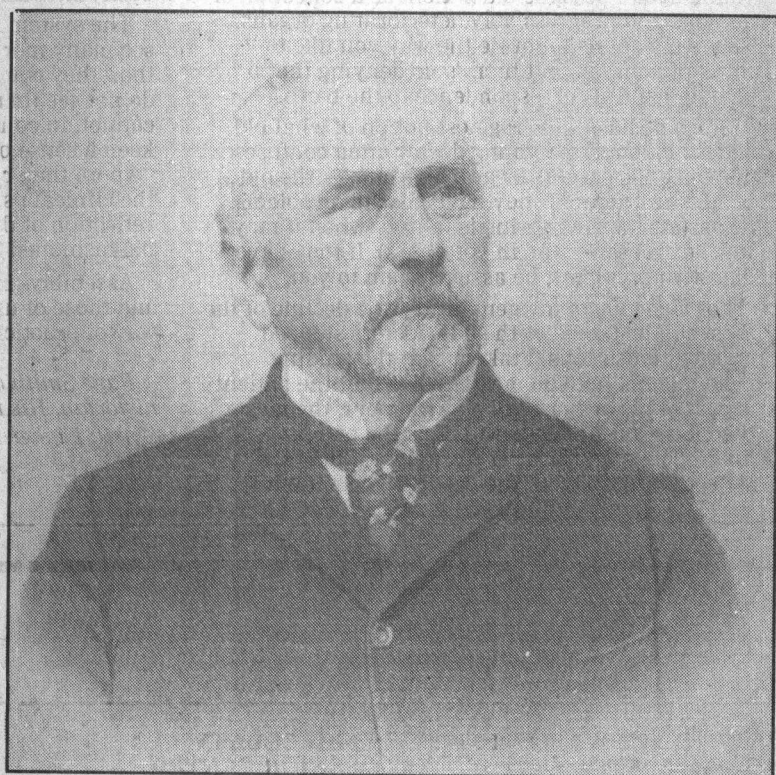




Sandy Lydon

How this county has changed



Frederick Augustus Hihn, the county's first home-grown millionaire, left an estate valued at \$3,600,000 in 1913.

THE NUMBERS tell the story (with a bow toward Harper's magazine ...):
Amount of money budgeted by Santa Cruz County Board of Supervisors to aid the sick and unemployed, 1890: \$10.

Daily wage of a carpenter in Santa Cruz in 1850: \$16.

Daily wage of a carpenter in Santa Cruz in 1876: \$4.

Price Santa Cruz farmers received per pound of potatoes in 1850: 12.5 cents.

Price Santa Cruz farmers received per pound of potatoes in 1852: 2 cents.

Price Santa Cruz farmers received per pound of potatoes in 1854: Zero.

Time to travel by railroad from Santa Cruz to Watsonville in 1876: 2 hours, 45 minutes.

Time to travel by bus from Santa Cruz to Watsonville in 1915: 1 hour, 15 minutes

Estimated value of estate left by Frederick Augustus Hihn in 1913: \$3.6 million.

Estimated value of estate left by Henry Cowell in 1903: \$3 million.

Estimated value of estate left by Joseph DeLaveaga in 1894: \$800,000.

Cost to individual homeowner of connecting Santa Cruz's first television cable service in 1954: \$135.

Monthly cost to homeowner of Santa Cruz's first television cable service in 1954: \$3.95.

Channels available on Santa Cruz's first television cable service in 1954: 3.

Years since the Mediterranean fruit fly was first identified as threatening California's agriculture: 79.

Cost of street railroad ride from Santa Cruz to Capitola in 1916: 10 cents.

Number of bathing suits rented by Seaside Company on July 4, 1916: 2,400.

Spent on Todd McFarren's successful campaign for the Watsonville City Council in December, 1989: \$13,173.

Spent on James A. Hall's successful campaign for mayor of Watsonville in May, 1911: \$23.

Cost to mail a first-class letter in 1910: 2 cents.

Number of mail deliveries in Santa Cruz each weekday in 1910: 2.

Wages paid entry-level mail carrier in 1910, per month: \$50.

Number of days each week that service windows were open at Santa Cruz Post Office in 1910: 7.

Number of rabbits clubbed to death over a four-hour period in a one-acre field of oats near Castroville in 1915: 592.

Estimated number of rabbits escaping the 1915 Castroville clubbing: 500.

Daily limit of rabbits one person could legally kill in 1915: 15.

Gallons of water, per connection, per day, consumed in Santa Cruz during 1934: 74.

Gallons of water, per connection, per day, allotted during rationing in Santa Cruz, 1990: 261.

Trout caught on Soquel Creek by four fishermen in two days, August, 1880: 826.

Weight of Fay Lanphier, first Miss Santa Cruz, 1924, in pounds: 138.

Height on Fay Lanphier in inches: 66.

Speed racing car was traveling, which caused the first auto racing fatality in Monterey in 1907, in miles per hour: 60.

Speed limit for automobiles driven within Salinas city limits in 1909, in miles per hour: 8.

Speed limit for horses ridden within Salinas city limits, in miles per hour: 8.

Average miles per gallon of gasoline achieved by W.H. Crowe's new Dodge automobile during the entire year of 1916: 19.2.

Miles per gallon of gasoline achieved by new Buick automobile on one round trip between San Jose and Santa Cruz in 1916: 20.4.

Times driver of Buick was required to downshift out of high gear during the San Jose to Santa Cruz trip: 0.

Total vehicles counted during daylight hours on the highway between Santa Cruz and Los Gatos, April 1916: 695.

Horse-drawn vehicles counted: 45.

Paid admissions to a Monterey theater to see the first talking movie shown in the Monterey Bay region, 1909: 1,632.

People turned away from the first talking movie: 800.

Total votes cast in 1879 referendum in the three Monterey Bay Area counties on issue of continuing Chinese immigration: 5,828.

Votes cast in favor of continuing Chinese immigration in Santa Cruz County: 4.

Votes cast in favor of continuing Chinese immigration in Monterey County: 1.

Votes cast in San Benito County in favor of continuing Chinese immigration: 2.

Votes cast by persons of Chinese ancestry: 1.

Regional politicians publicly favoring the continuance of Chinese immigration in election of 1880: Zero.

Strokes required for Fred Swanton to complete a round of golf at the opening of the Casa del Rey golf course in February, 1918: 141.

Regional politicians publicly favoring the continuance of Chinese immigration in election of 1880: Zero.

* * *

Strokes required for Fred Swanton to complete a round of golf at the opening of the Casa del Rey golf course in February, 1912: 141.

Money collected from bystanders by a street performer named "The Human Fly" after he climbed the front of the St. George Hotel in Santa Cruz in 1916: \$2.

Sandy Lydon is a Santa Cruz County historian, lecturer and author; he hosts a half-hour television show on local history every Saturday, 5:30 p.m., KCBA, Channel 35.