

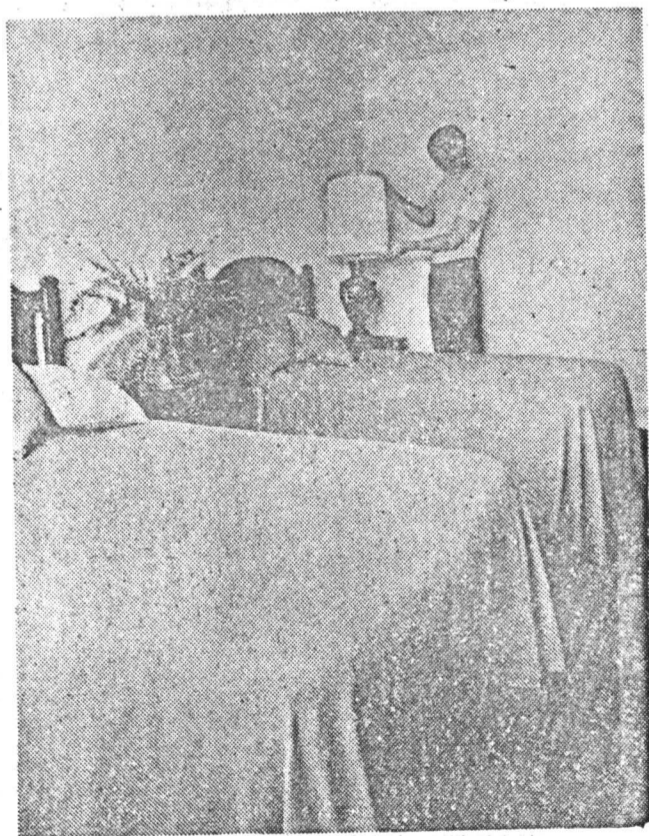
APTOS to 1978



DEDICATION PLAQUE is held by the Rev. Herb Schmidt, left, incoming president of the board of directors, and Rodger Bolles, outgoing president, in the Halloran Hall dining kitchen area. Below, Stacy Smith, a counselor at the hall, is shown in the Dennis Blevins Memorial wing of the hall, the donation of the Ernie Blevins family.

# Halloran Hall

## Open House Today



The public is invited to visit Halloran Hall today between 1 and 6 p.m. and to attend the formal dedication ceremony at 3 o'clock.

This is the last time the entire facility will be open to the public, it has been announced.

The hall is located at 2950 Willowbrook Lane, Aptos, and may be reached by going from Highway 1 to

Park Avenue, then to Soquel Drive, turn right on it and proceed to Willowbrook which is the first street on the right.

The hall provides a residential therapeutic setting for 10 adolescents ages 14 to 17, who are experiencing personal, social and behavioral problems.

Difficulties at home, in school or in community environments have brought these young people under the supervision of the Juvenile Courts and probation system.

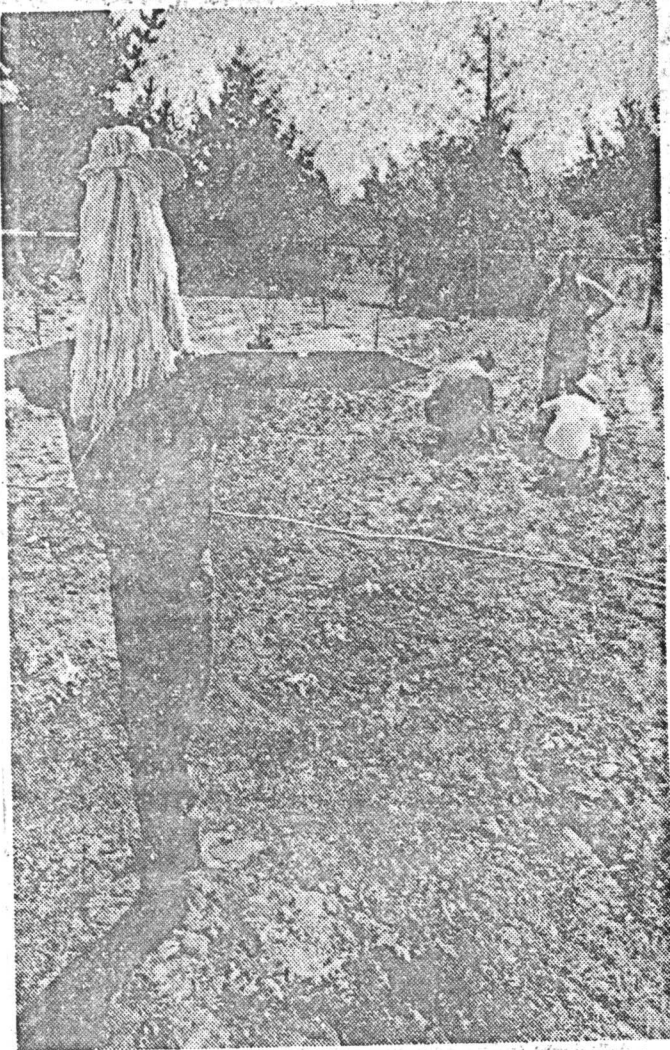
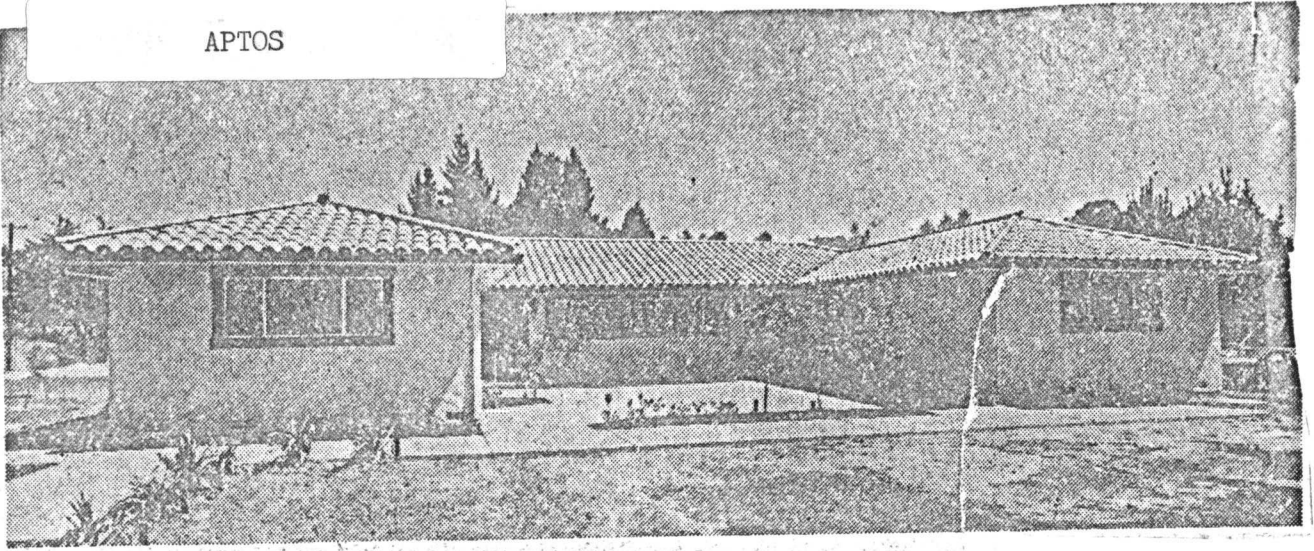
The supportive, group-living environment at Halloran Hall provides rehabilitative opportunities for those young people who need to be removed from a stressful environment but whose problems do not require institutional confinement.

The program at the hall involves the following elements: personal development, social development, educational development, vocational development, family counseling, outreach program and evaluation with continuous monitoring of the total program.

On-call medical services

REFERENCE





EXTERIOR VIEW of Halloran Hall at top, with its pleasing California styling, tile roof and stucco finish. Below, Howard Hansen, volunteer director of the garden project, supervises two hall residents as they put in vegetable planting.

are provided by a local physician. Fees for residents are paid by the Probation Department of the county which places the young person in the hall.

The board of directors for the hall includes: Rodger Bolles, president; Nancy Hartsell, vice president; the Rev. Herb Schmidt, secretary-treasurer; Eve Pecchenino, David Graas, George Fitzgerald, Vincent Cirivello and David Wick.

Executive director for the hall is Reynold Bean, Ed.M., a licensed marriage, family and child counselor.

Associate director is Anne Halloran Leonard, long active in many civic and educational programs in Santa Cruz County. She also is a member of Santa Cruz City Planning Commission.

Rooms in the hall have been furnished by local or-

ganizations that include: Kiwanis, Marri-Eds Junior Woman Woman's Club, Santa Cruz Exchange Club, the Jay-Cees, Lions Club, Soroptimists, Beta Sigma Phi and the Ernie Blevins family. Girl Scouts donated trees.

APPROXIMATELY  
 APTOS BRANCH  
 LIBRARY  
 7600 S. MARSH DRIVE  
 APTOS, CALIFORNIA 95003

# You're Invited

APTOS

Last chance for the public to visit the entire plant at Halloran Hall is today from 1 to 6 p.m.

At top, living room view with Reynold Bean, executive director, and Anne Halloran Leonard, associate director. All living room furniture was purchased through a revenue sharing grant by the county board of supervisors.

Ingrid Lindsay at right, chairwoman for the Marri-Eds project, is shown in the girls' room that was furnished by that organization. It is decorated in shades of green, yellow and orange.

Below at right, Tanya Greg, head counselor at the hall, in the room for girls that was furnished by Beta Sigma Phi. Nine chapters of the cultural sorority worked together to complete the furnishing project which includes rattan furniture.

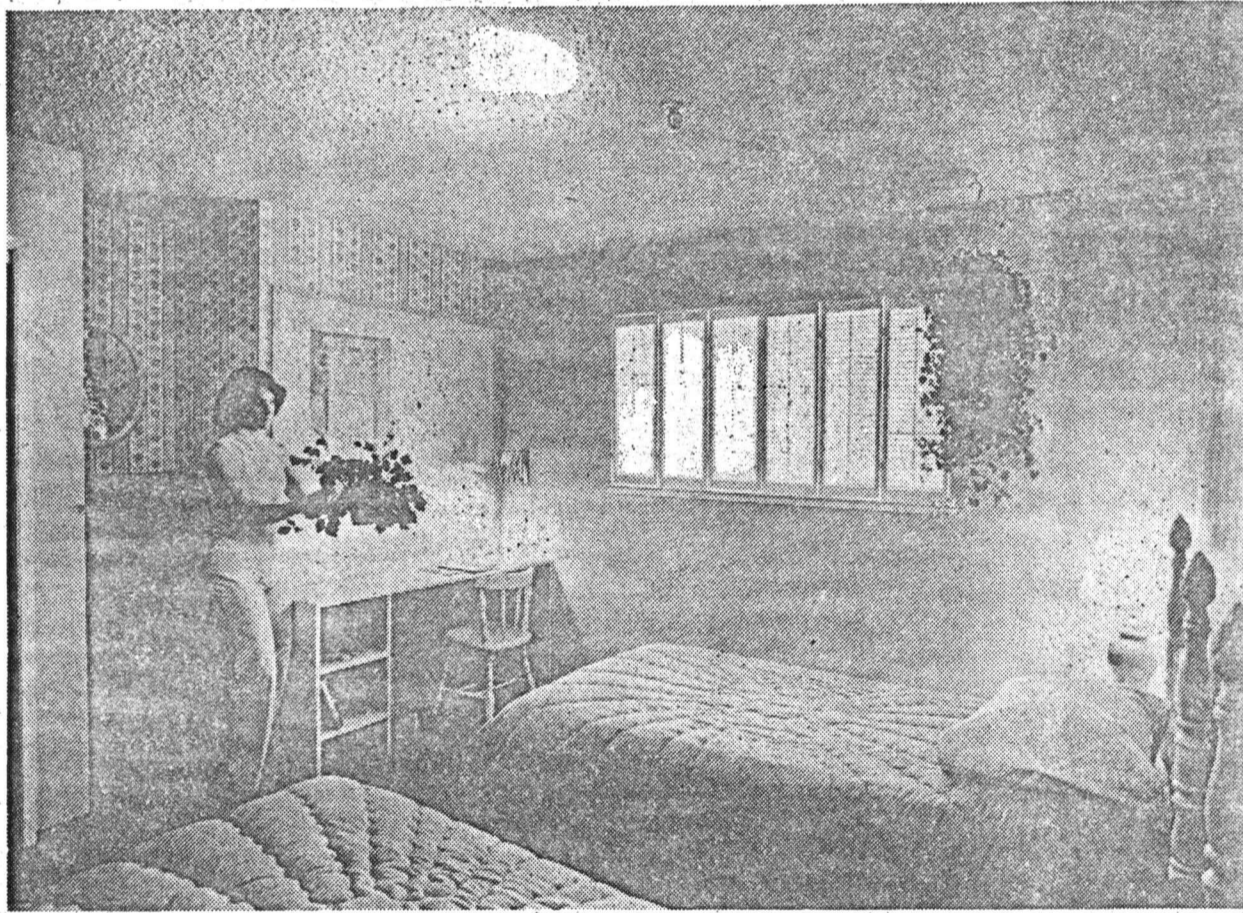
Directly below, the hall kitchen with white tile that was all donated by the Stonelite Tile of San Jose. A group of 10 local tile setters cooperated to donate their time and labor to set all the tile work.

Surf City Kiwanis donated sofas, chairs, ping pong equipment and games for the recreation room. A fence around the garden area was built by Jay-Cees. Roy Rydell designed the entire landscaping plan and Girl Scouts donated 48 ornaments and trees. The Lions Club gave \$500.

Santa Cruz Soroptimists engaged an interior decorator to do the room they furnished and it is striking in shades of beige, gold and green with built-in desks.

The memorial wing furnished by the Blevins family is in Spanish style with heavy dark wood furniture and a blue and red color theme.

Orchard trees were the gift of Santa Cruz Exchange Club. All in all, the hall is a cooperative effort by many.



MEMORIAL WING BRANCH REFERENCE

