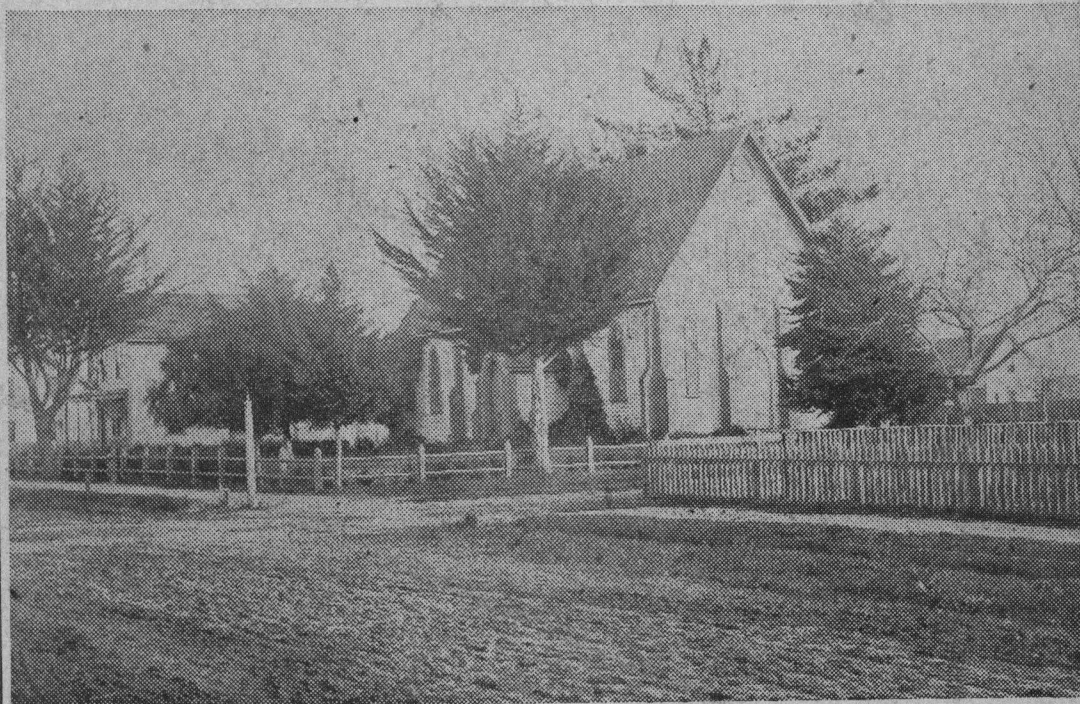


ta Cruz  
day, O 1951

# Santa Cruz Yesterdays



CALVARY EPISCOPAL CHURCH IN 1876

(From the Preston Sawyer Collection)

Oldest church structure in Santa Cruz, Calvary Episcopal church stands today much as it did when it was consecrated by Bishop Kip nearly 85 years ago. Even on that date, October 26, 1868, the building had been in use for over a year and a half, with Rev. E. C. Loop as rector.

The cornerstone was laid June 29, 1864, on the big lot given by Mrs. Joseph Boston, wife of the

pioneer merchant, who, as partner in Boston & Williams, had stores in Santa Cruz and Monterey as early as 1850.

Others who had had church membership in their former homes, including Henry Fell Parsons, the Englishman, had a church organization here starting about 1862. Meetings, with Rev. I. L. Ver Mehr in the pulpit, were held in the court room, which then was on the upper floor of the Hugo Hihn building, the brick structure still standing at the upper end of Pacific avenue at Front street, and in Temperance Hall, the wooden two story structure which stood half way up the Mission street hill.

Loop First Pastor

Loop was here as resident rector before the cornerstone laying. The vestry was Richard Savage, H. F. Parsons, Alex Russell, Edmond Jones, Edward Bender, Samuel Sharp, R. K. Vestal and E. L. Williams.

Hymns were sung at the cornerstone ceremony by a proud little choir composed of Mrs. Boston, Mrs. J. O. Wanzer, who had been Mattie Webber, the school teacher, Mrs. Alice Moore, Bart Stevens, I. C. Willson and Rollin Case.

The building, which cost \$5000, was more severe in its lines than it is today. Ten years later the sixteen foot separate belfry was built at the east end to hold a bell received from back east. In the nineties the double entrance at the west end, with the baptistry, was added. The church's pipe organ was installed in 1902.

Loop was rector until 1868 when Rev. G. A. Easton came for seven years, to be followed by Rev. Robert Scott who stayed until 1879. Next was Rev. G. A. Ward.

Rector 25 Years

After a year with Rev. James C. Atkinson, Rev. C. O. Tillotson

came, to hold the pulpit 25 years and to stay in the city as rector emeritus. Tillotson died in Santa Cruz in 1921.

The group which formed Calvary Episcopal church contained some of the most prominent residents of Santa Cruz. They were merchants, office holders, civic leaders. A number of the present members are grandchildren of those who 80 years ago banded themselves into the church organization.

The 1876 picture of Calvary

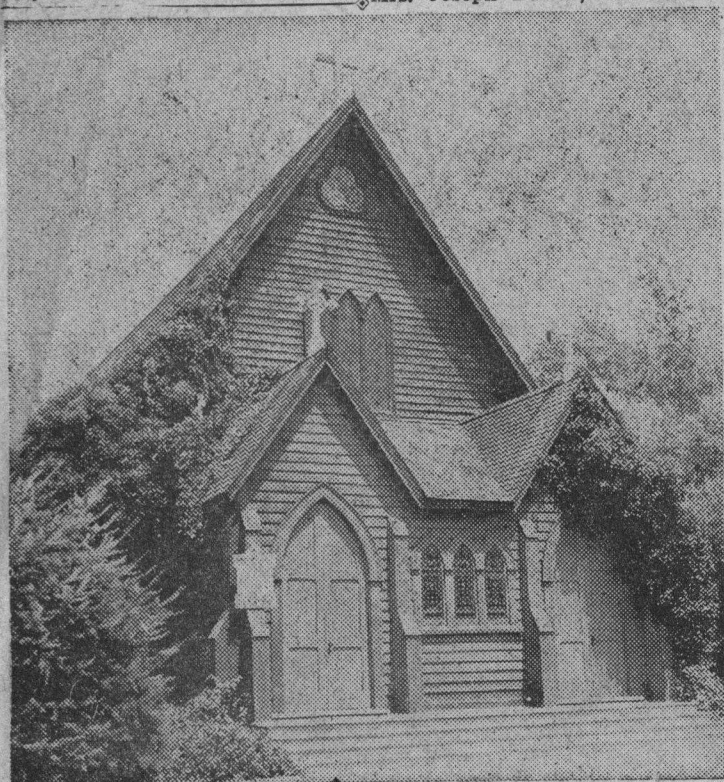
church is the earliest one known. It shows the original edifice before the double entrance was added on the west end. Also, the old parsonage, seen at the left, had not yet been moved around to its present location on Center street.

Lincoln street plainly shows condition in certain seasons of the year of Santa Cruz thoroughfares, in that long gone period. The picket fence to the right encloses the Lincoln and Center corner now and since 1890 marked by the Congregational church.

When Mexico ceded California to the United States, ten million of the state's one hundred million acres were owned by individuals.

The Mount Shasta fish hatchery was established in 1888.

Monday evening meetings.  
Anyone interested in real estate may take the course.



MAIN ENTRANCE 10 YEARS AGO

## UNIVERSAL FA



Don't "put off" that building job. Get your lumber, cement and supplies from us and see how satisfactory the results will be.

2-8x6-8	\$7.95
One Panel Dopr, ea. . .	
4x8x1/2	\$1.76
Plaster Board, sheet . . .	
4x8x1/2 Redwood Panel	\$5.44
3 ply, exterior, sheet . .	
Reading, bath or bedroom	\$1.49
Latch Sets . . . . .	
3 1/2x3 1/2 bright	55c
Steel Butts, pr. . . . .	

UNIVERSAL SUPPLY CO.  
2501 - 17TH AVE.  
TEL. 3195 - R