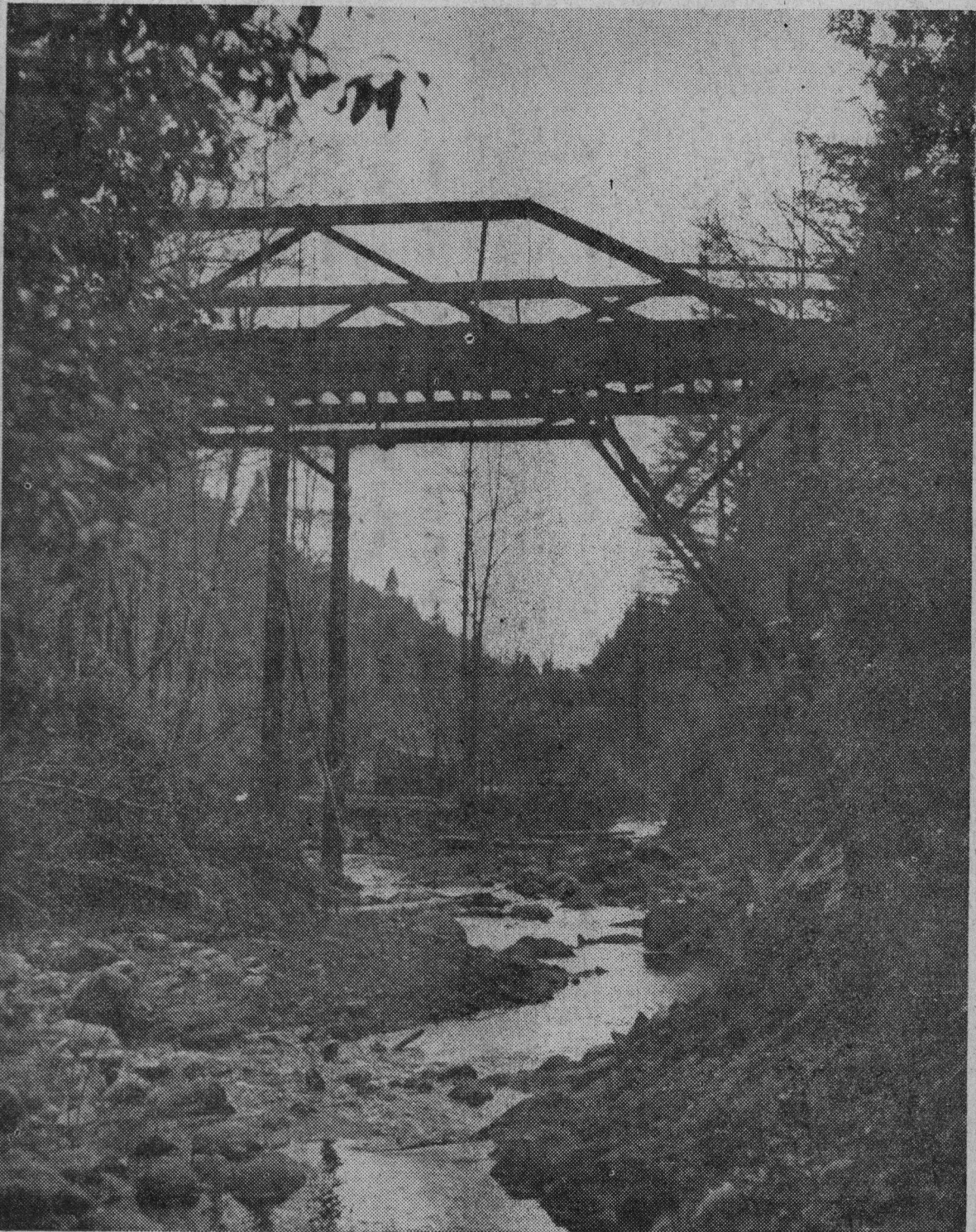


Do You Know This Historic Bridge?



After the Civil war's end, this bridge with hand-hewn timbers was erected 36 feet over the headwaters of east Soquel creek, or Laurel creek, as it is known. It is one of the less frequented beauty spots of the county, especially since the nearby Santa

Cruz mountain railroad line was closed. This is a "sample" picture of a series of pictures and stories of interesting spots in the county to start early in April. Another picture on page 5 shows same bridge in 1913 when the Hihn lumber mill was operating in

the creek bed. Rube Totten of Capitola, who owns the picture, stands at the rear of the wagon. Third from the right is Fred Hihn, son of the mill founder, F. A. Hihn.

For story explaining the new Sentinel-News series see page 5.