

Sentinel 3/31/70 p1

New Home For County Bank In Soquel 100th Year Wednesday

County Bank

The Soquel branch office of the County Bank of Santa Cruz will have a new home Sept. 1.

Bank President Ray Seller announced County Bank will move its office from 4630 Soquel Drive, across the street to the former location of Midtown Market, 4700 Soquel Drive.

Total floor space of the new building will be 6300 square feet. The land area of the site measures 25,000 square feet. The refurbished structure will feature a pair of auto-teller windows of a new design being introduced in Northern California for the first time.

Seller, in explaining that deposits of the Soquel office have more than doubled in the past 15 years, said, "Auto teller

windows and off-street parking are two customer conveniences that could not be adequately supplied in our present location.

John M. Allen, assistant vice president, will continue as manager of the Soquel branch office. Reese Construction Co. of Santa Cruz has been awarded the contract for the building.

County Bank Vice-President A. R. Morgan noted the site of the new branch office has a long history. It was once owned by the Porter family, after whom Porter Street in Soquel is named. Benjamin Porter was one of the bank's early directors in 1875, and for the past "95 of our 100 years, there has been a Porter or a Sesnon (the other side of the Porter family) on County

Bank's board of directors," Morgan said.

F. A. Angell and Bros. later occupied the buildings at the site, which included the post office and several retail businesses. The building which is being reconstructed was built by the late Darrow Palmer of Santa Cruz.

County Bank is also making plans for a second office in Felton when building of a new shopping center there commences.

County Bank of Santa Cruz will mark its 100th anniversary on Wednesday.

The informal observance from 3 to 5:30 p.m. at each of the bank's 11 offices will include the serving of refreshments and

the display of historic photographs which depict landmarks, events or persons associated with the areas served by the respective offices.

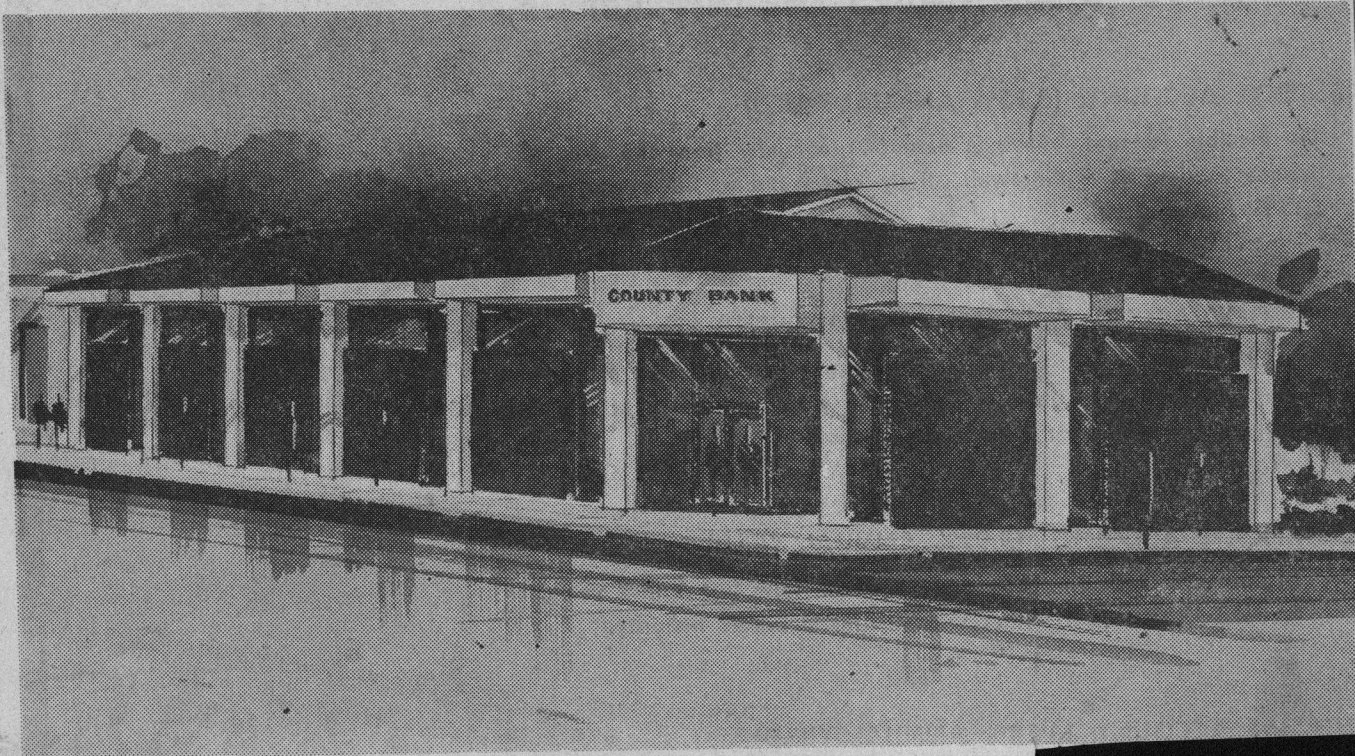
A specially prepared Centennial booklet, "If Walls Could Talk" will be given away free. There will be balloons for children and other gifts are planned.

The bank began on April 1, 1870 as the Santa Cruz Bank of Savings and Loan with Samuel A. Bartlett, a grocer, as president. It later merged with the Bank of Santa Cruz County, established in 1875 with Henry Cowell as president.

After various name changes over the years, the firm became County Bank of Santa Cruz in 1955.

The bank operated with a

single office — on Pacific Avenue in Santa Cruz — until 1948, when it opened its first branch in Felton. The East Santa Cruz office was opened in 1953, Soquel in 1954, Boulder Creek in 1957, office in East Cliff Village, the trust department and in 1967 the computer center began operations in a new 10,000 square-foot building in the San Lorenzo Industrial Park. In 1960 the bank opened its



A new branch office of County Bank of Santa Cruz is scheduled to be in opera-

tion in Soquel by Sept. 1. Reese Construction Co. of Santa Cruz has been awarded the contract for the 6300-square-

foot building, to be located at the former site of Midtown Market in downtown Soquel.

A new branch office of County Bank of Santa Cruz is scheduled to be in opera-

tion in Soquel by Sept. 1. Reese Construction Co. of Santa Cruz has been awarded the contract for the 6300 - square-

foot building, to be located at the former site of Midtown Market in downtown Soquel.



This photo, taken in the late 1800s, shows four buildings that made up the post office and several retail businesses of F. A. Angell & Bros., descendants of whom are still

residents and active in business in the Soquel area. This is the same site on which County Bank will build its new Soquel branch office. The Porter family, for whom Porter

Street is named, preceded the Angell's as owners of the property. F. A. Angell and his wife are standing on the balcony of building in this picture.